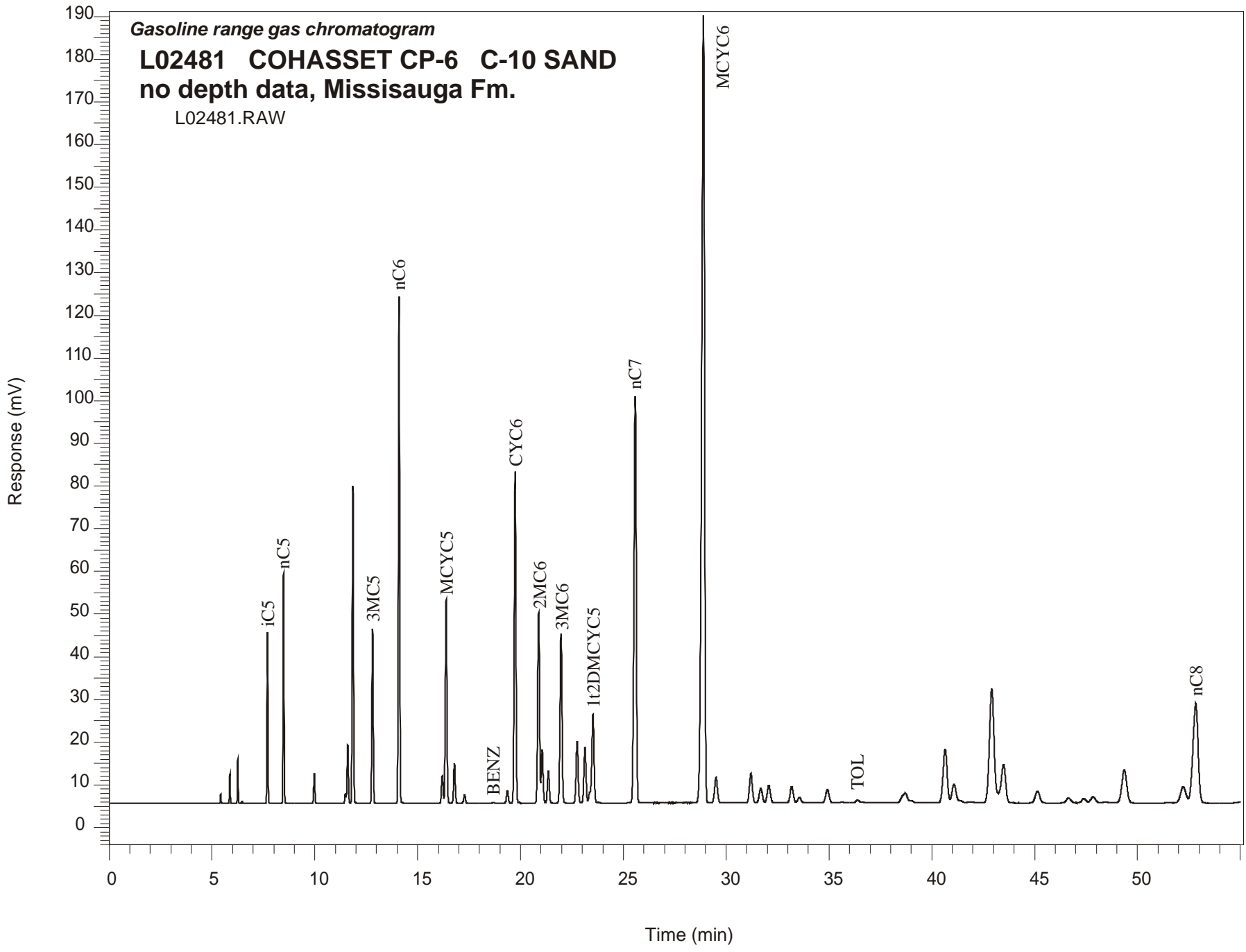


Gasoline range gas chromatogram
L02481 COHASSET CP-6 C-10 SAND
no depth data, Missisauga Fm.
L02481.RAW



COHASSET CP-6 GSC #L02481, C-10 SAND Gasoline Range Gas Chromatogram Report

| RET TIME [min] | PEAK | AREA | HEIGHT [uV] |
|----------------|-----------|--------------------------|-------------|
| 7.70 | iC5 | 122686 | 40074 |
| 8.48 | nC5 | 170731 | 54060 |
| 9.97 | 22DMC4 | 27447 | 6998 |
| 11.49 | CYC5 | 9173 | 2373 |
| 11.60 | 23DMC4 | 59572 | 13698 |
| 11.85 | 2MC5 | 313414 | 74408 |
| 12.80 | 3MC5 | 183699 | 40906 |
| 14.09 | nC6 | 541014 | 118894 |
| 16.19 | 22DMC5 | 34695 | 6443 |
| 16.38 | MCYC5 | 250093 | 47728 |
| 16.79 | 24DMC5 | 50517 | 9343 |
| 17.28 | 223TMC4 | 11446 | 1950 |
| 18.68 | Benzene | 720 | 131 |
| 19.36 | 33DMC5 | 18479 | 2967 |
| 19.74 | CYC6 | 463520 | 77663 |
| 20.88 | 2MC6 | 278378 | 44613 |
| 21.05 | 23DMC5 | Peak co-elutes with 2MC6 | |
| 21.35 | 11DMCYC5 | 50018 | 7508 |
| 21.97 | 3MC6 | 262602 | 39769 |
| 22.75 | 1c3DMCYC5 | 99068 | 14359 |
| 23.13 | 1t3DMCYC5 | 91189 | 12956 |
| 23.52 | 1t2DMCYC5 | 168794 | 20808 |
| 25.58 | nC7 | 730924 | 95169 |
| 28.89 | MCYC6 | 1786461 | 184629 |
| 29.51 | 22DMC6 | 58380 | 5972 |
| 31.21 | ECYC5 | 68234 | 6909 |
| 31.68 | 25DMC6 | 36218 | 3450 |
| 32.08 | 24DMC6 | 43802 | 4177 |
| 33.19 | 223TMC5 | 42176 | 3828 |
| 35.64 | 234TMC5 | 2551 | 219 |
| 36.38 | Toluene | 5859 | 570 |
| 40.65 | 2MC7 | 172248 | 12633 |
| 43.49 | 3MC7 | 146408 | 9084 |
| 52.23 | 1c4DMCYC6 | 69836 | 3824 |
| 52.83 | nC8 | 411847 | 23426 |