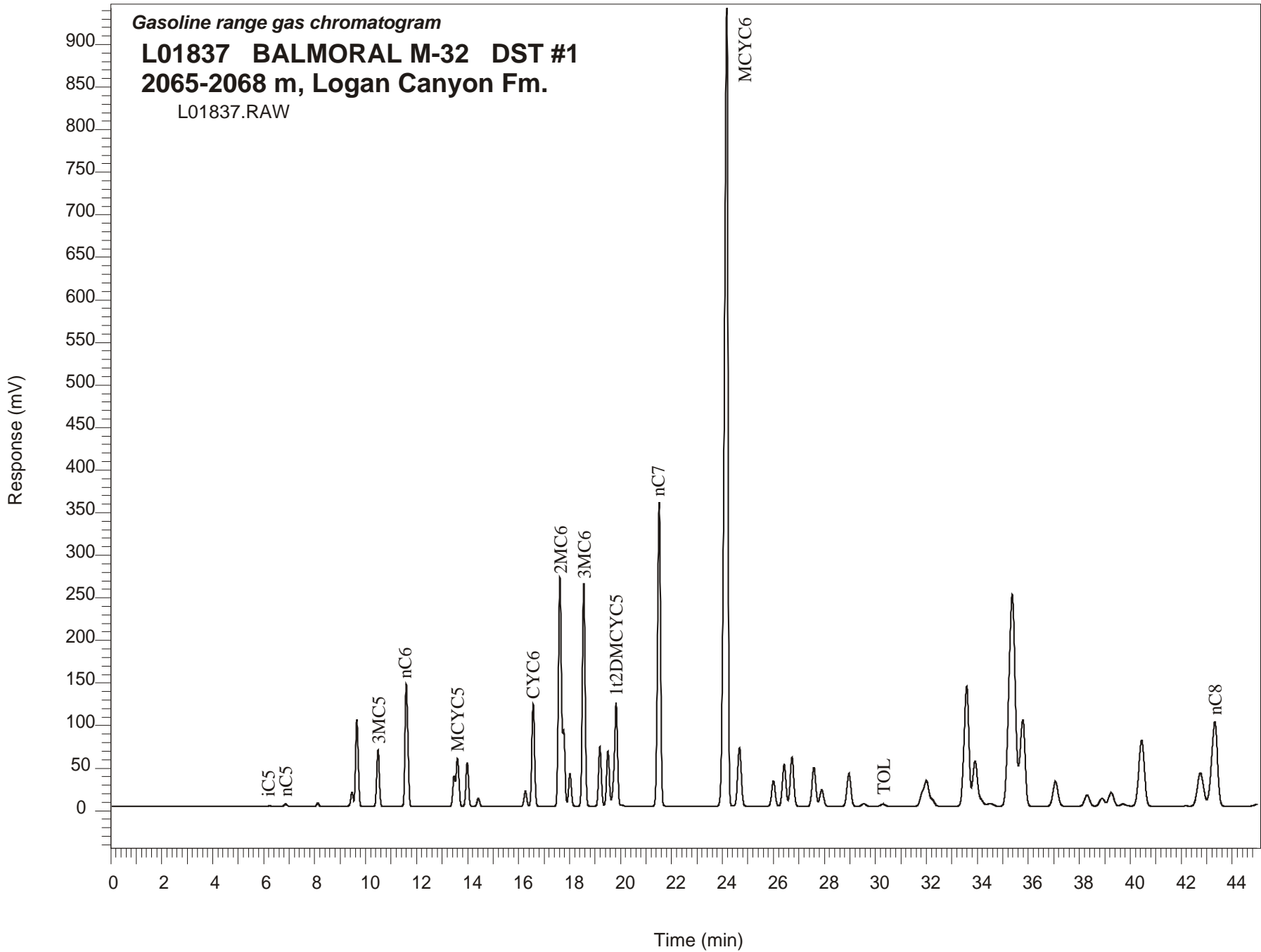


**Gasoline range gas chromatogram**  
**L01837 BALMORAL M-32 DST #1**  
**2065-2068 m, Logan Canyon Fm.**  
L01837.RAW



**BALMORAL M-32 GSC #L01837, DST#1**  
**Gasoline Range Gas Chromatogram Report**

RET TIME [min]	PEAK	AREA	HEIGHT [uV]
6.22	iC5	6010	821
6.85	nC5	23668	3151
8.12	22DMC4	24638	4088
9.46	23DMC4	111853	16393
9.65	2MC5	728690	102567
10.48	3MC5	474207	66158
11.59	nC6	1131017	143770
13.47	22DMC5	226936	35922
13.60	MCYC5	437521	56534
13.99	24DMC5	364029	51382
14.42	223TMC4	67916	9636
16.27	33DMC5	130639	18078
16.57	CYC6	904776	120284
17.62	2MC6	2181114	269389
17.76	23DMC5	520108	89922
18.01	11DMCYC5	281984	38106
18.56	3MC6	1994122	261717
19.19	1c3DMCYC5	537772	70396
19.51	1t3DMCYC5	501599	64920
19.83	1t2DMCYC5	1063911	121430
21.52	nC7	2959573	357388
24.17	MCYC6	9391805	936936
24.67	22DMC6	676094	68499
26.00	ECYC5	287125	29851
26.42	25DMC6	490214	49779
26.73	24DMC6	576467	58052
27.59	223TMC5	471748	45763
29.54	234TMC5	33665	3000
30.30	Toluene	32146	2693
33.59	2MC7	1870446	141415
35.79	3MC7	1415229	101770
42.75	1c4DMCYC6	668387	39027
43.32	nC8	1615065	99271