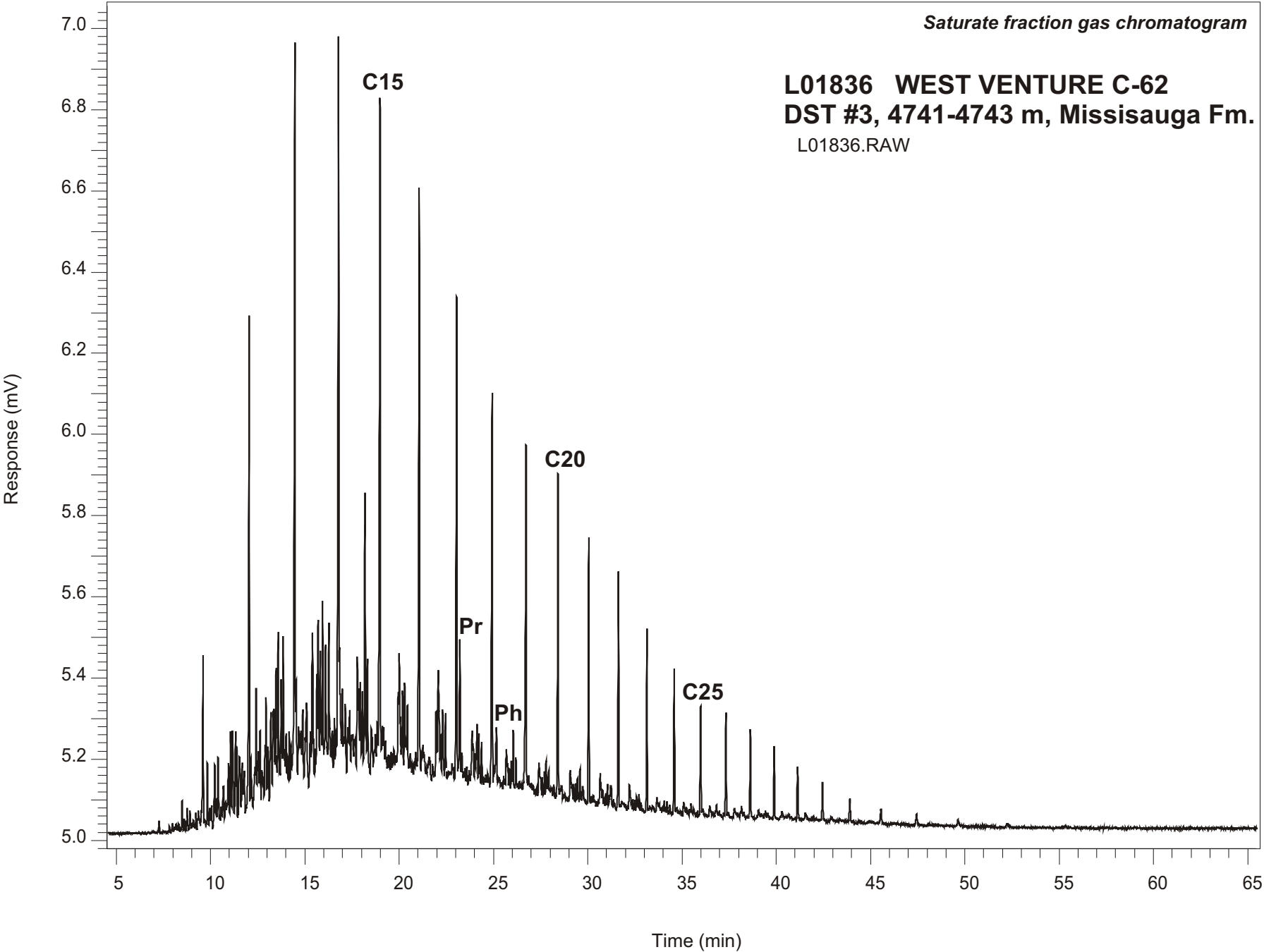


Saturate fraction gas chromatogram

**L01836 WEST VENTURE C-62**  
**DST #3, 4741-4743 m, Missisauga Fm.**  
L01836.RAW



**WEST VENTURE C-62**  
**GSC #L01836, DST#3**  
**Saturate Fraction Gas Chromatogram Report**

<b>RET TIME [min]</b>	<b>PEAK</b>	<b>AREA</b>	<b>HEIGHT [uV]</b>
12.05	C12	3432	1198
14.47	C13	5852	1846
16.79	C14	5921	1831
18.99	C15	5640	1644
21.07	C16	4901	1435
23.05	C17	4144	1191
23.22	Pr	1207	345
24.93	C18	3332	975
25.16	Ph	614	139
26.72	C19	2741	827
28.43	C20	2195	790
30.06	C21	1885	655
31.63	C22	1549	573
33.13	C23	1274	448
34.59	C24	1054	358
35.99	C25	862	265
37.33	C26	724	255
38.63	C27	624	214
39.89	C28	506	178
41.13	C29	421	129
42.45	C30	283	91
43.91	C31	217	55
45.56	C32	132	33