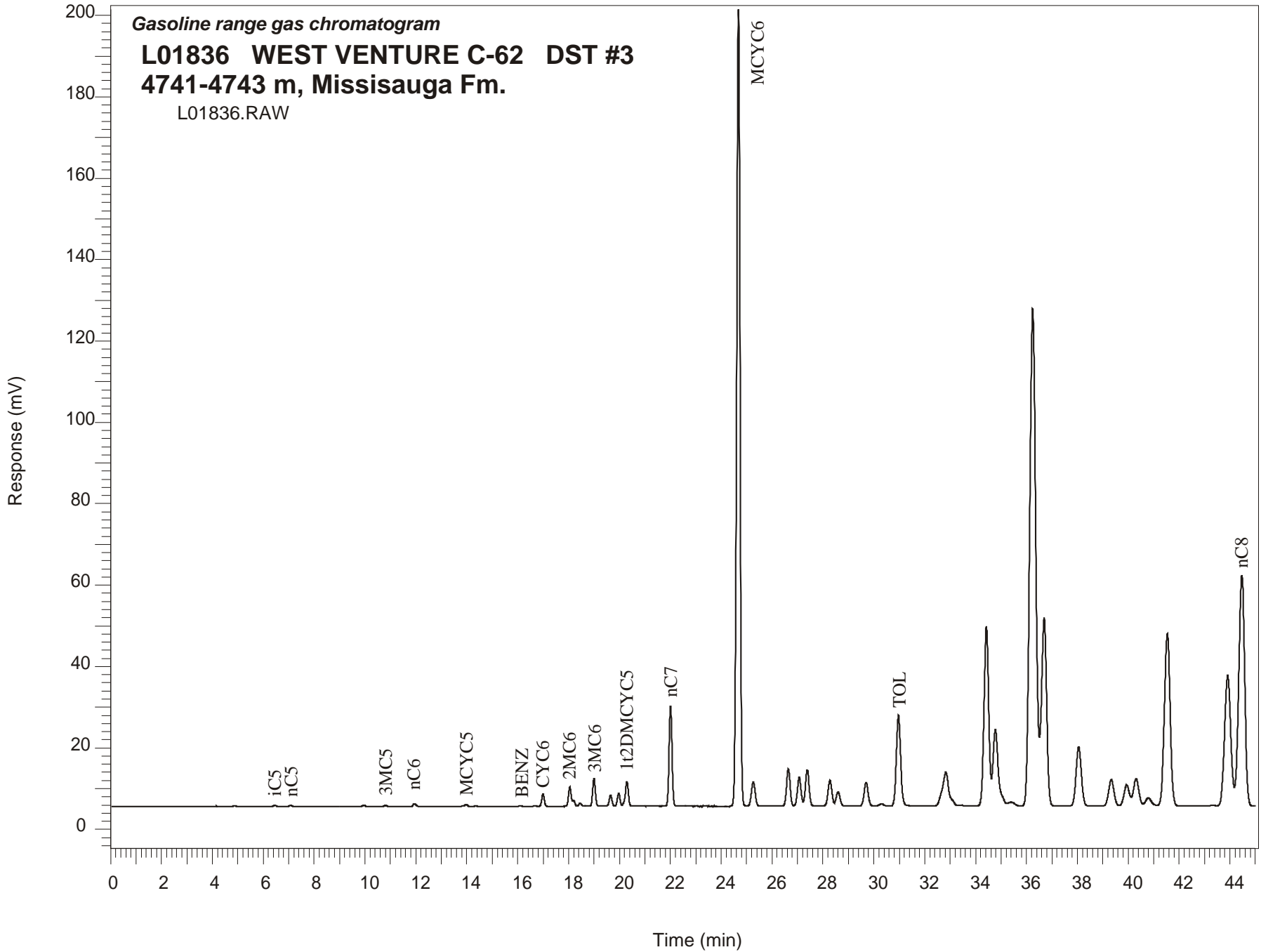


Gasoline range gas chromatogram
L01836 WEST VENTURE C-62 DST #3
4741-4743 m, Missisauga Fm.
L01836.RAW



WEST VENTURE C-62 GSC #L01836, DST#3
Gasoline Range Gas Chromatogram Report

RET TIME [min]	PEAK	AREA	HEIGHT [uV]
6.46	iC5	2477	364
7.07	nC5	2635	399
9.96	2MC5	2193	336
10.80	3MC5	1837	280
11.94	nC6	4957	693
13.84	22DMC5	522	93
13.98	MCYC5	4118	560
14.36	24DMC5	1156	177
16.11	Benzene	1392	208
16.67	33DMC5	1144	147
16.99	CYC6	21567	3021
18.05	2MC6	35662	4818
18.19	23DMC5	8998	1471
18.46	11DMCYC5	5933	804
19.00	3MC6	49733	6840
19.65	1c3DMCYC5	20223	2768
19.97	1t3DMCYC5	22943	3113
20.29	1t2DMCYC5	50185	6042
22.01	nC7	195451	24539
24.68	MCYC6	1795862	195901
25.26	22DMC6	61494	5953
26.64	ECYC5	88592	9112
27.07	25DMC6	71235	7143
27.39	24DMC6	91017	8919
28.28	223TMC5	66188	6305
30.29	234TMC5	6004	514
30.97	Toluene	259500	22269
34.42	2MC7	567493	44037
36.70	3MC7	662273	46264
43.90	1c4DMCYC6	546339	32088
44.46	nC8	927987	56777