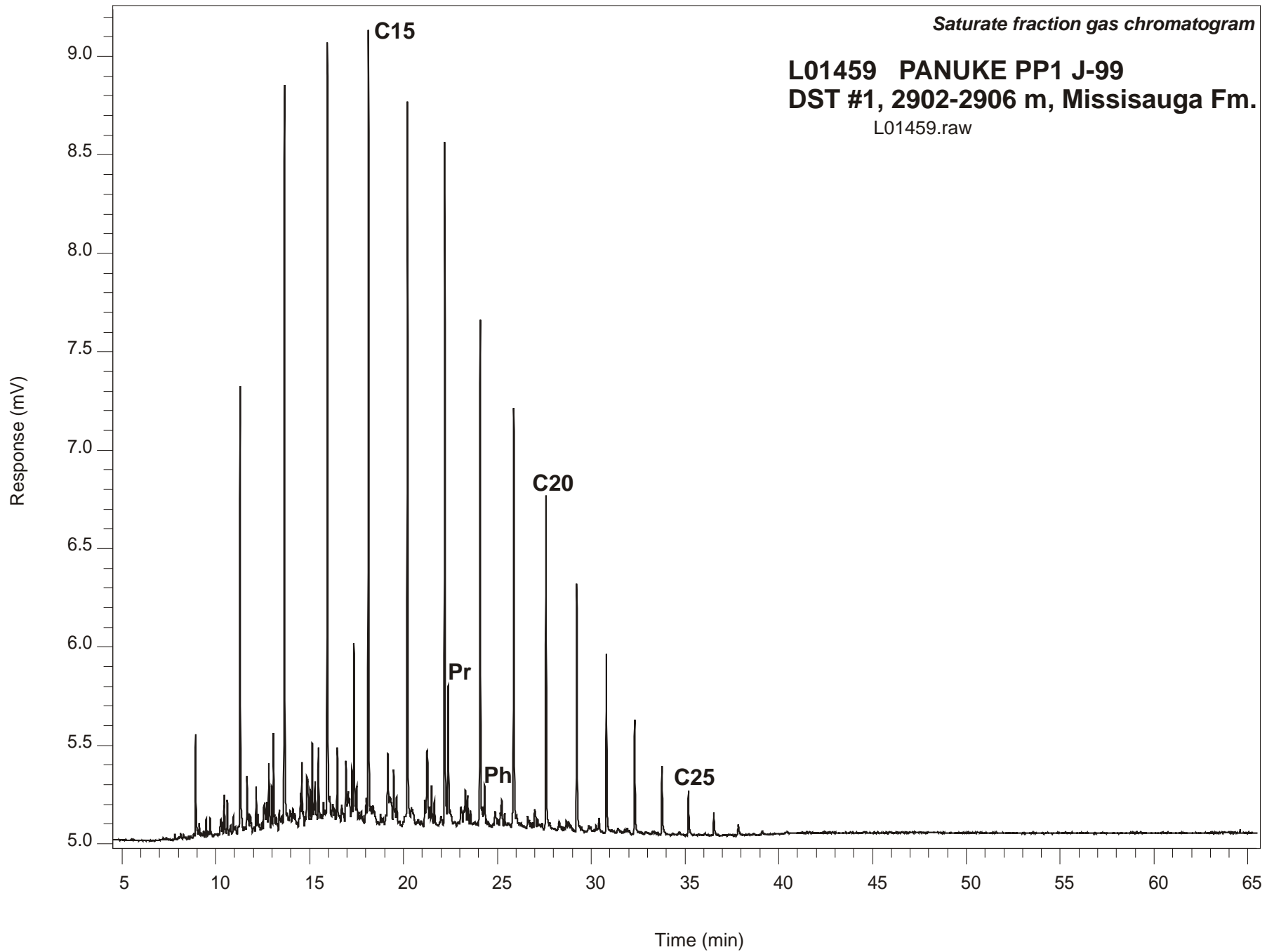


Saturate fraction gas chromatogram

L01459 PANUKE PP1 J-99
DST #1, 2902-2906 m, Missisauga Fm.

L01459.raw



PANUKE PP1 J-99
GSC #L01459, DST#1
Saturate Fraction Gas Chromatogram Report

RET TIME [min]	PEAK	AREA	HEIGHT [uV]
11.29	C12	5787	2274
13.66	C13	8920	3710
15.95	C14	10218	3961
18.13	C15	10364	4036
20.21	C16	9439	3633
22.20	C17	8530	3451
22.38	Pr	2209	668
24.08	C18	6634	2516
24.32	Ph	609	182
25.88	C19	5899	2110
27.59	C20	4523	1674
29.23	C21	3416	1237
30.81	C22	2479	900
32.32	C23	1801	579
33.77	C24	1193	351
35.18	C25	682	221
36.53	C26	383	116
37.84	C27	171	50