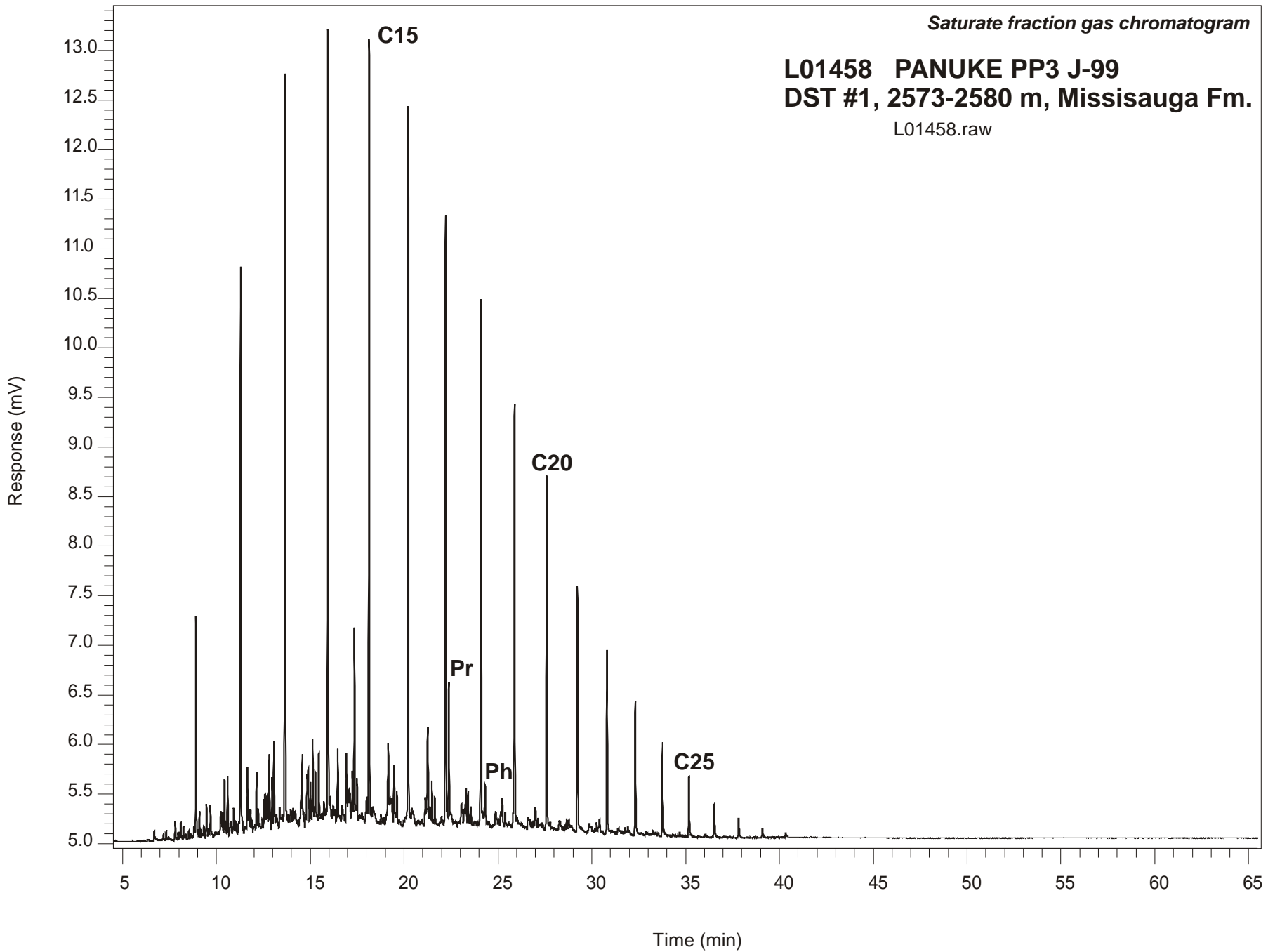


*Saturate fraction gas chromatogram*

**L01458 PANUKE PP3 J-99  
DST #1, 2573-2580 m, Missisauga Fm.**

L01458.raw



**PANUKE PP3 J-99**  
**GSC #L01458, DST#1**  
**Saturate Fraction Gas Chromatogram Report**

| <b>RET TIME [min]</b> | <b>PEAK</b> | <b>AREA</b> | <b>HEIGHT [uV]</b> |
|-----------------------|-------------|-------------|--------------------|
| 11.29                 | C12         | 13525       | 5669               |
| 13.66                 | C13         | 18995       | 7526               |
| 15.95                 | C14         | 20720       | 8084               |
| 18.14                 | C15         | 20668       | 7848               |
| 20.22                 | C16         | 19595       | 7280               |
| 22.21                 | C17         | 16866       | 6113               |
| 22.38                 | Pr          | 4212        | 1351               |
| 24.09                 | C18         | 13877       | 5344               |
| 24.32                 | Ph          | 1700        | 415                |
| 25.88                 | C19         | 12031       | 4225               |
| 27.60                 | C20         | 9173        | 3530               |
| 29.23                 | C21         | 7111        | 2451               |
| 30.81                 | C22         | 5263        | 1836               |
| 32.32                 | C23         | 3939        | 1363               |
| 33.77                 | C24         | 2658        | 934                |
| 35.17                 | C25         | 1877        | 606                |
| 36.52                 | C26         | 1043        | 333                |
| 37.83                 | C27         | 715         | 198                |
| 39.09                 | C28         | 328         | 92                 |
| 40.34                 | C29         | 164         | 39                 |