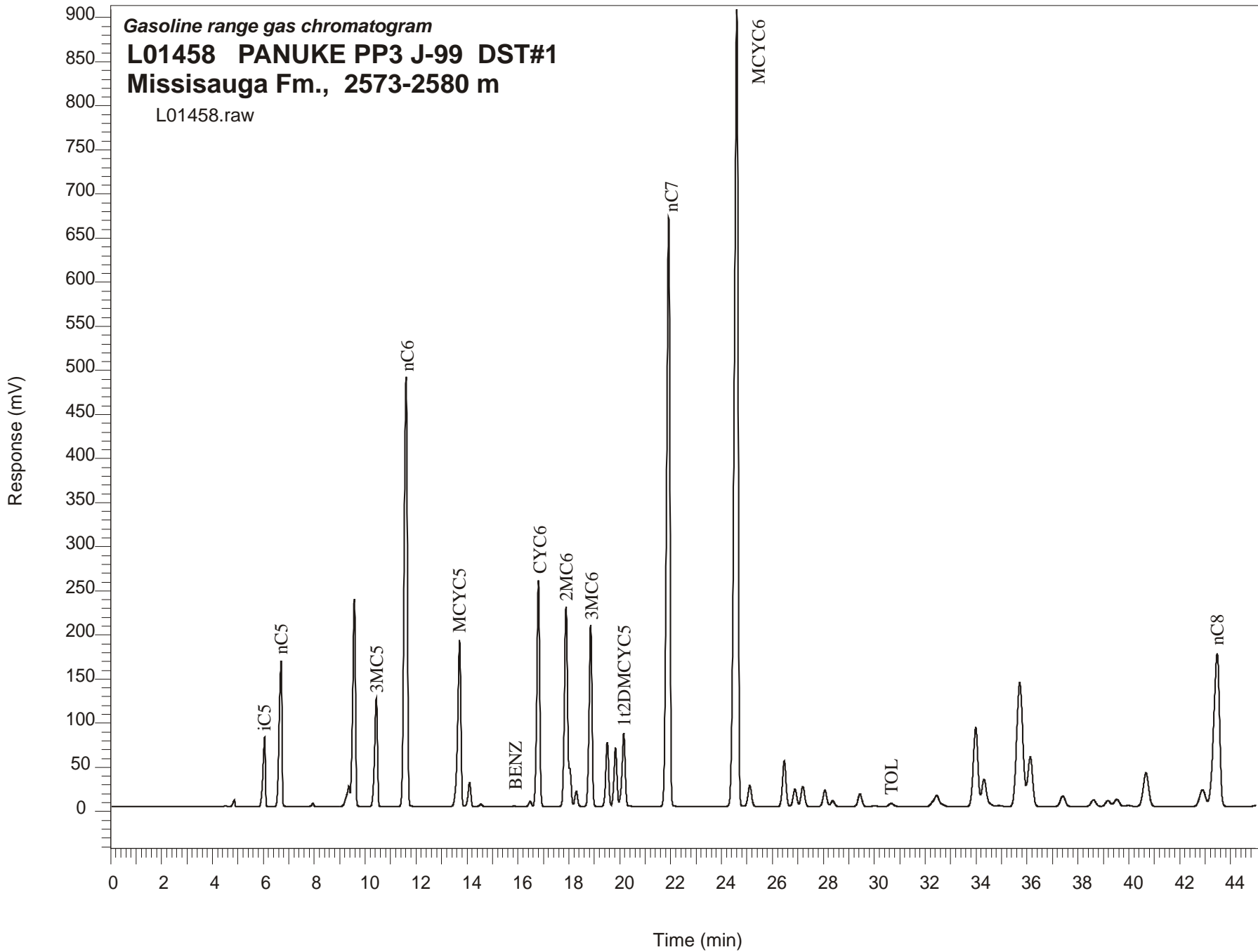


Gasoline range gas chromatogram
L01458 PANUKE PP3 J-99 DST#1
Missisauga Fm., 2573-2580 m
L01458.raw



PANUKE PP3 J-99 GSC #L01458, DST#1 Gasoline Range Gas Chromatogram Report

RET TIME [min]	PEAK	AREA	HEIGHT [uV]
6.05	iC5	501062	78881
6.70	nC5	1274720	164909
7.95	22DMC4	21881	3842
9.36	23DMC4	206457	22975
9.58	2MC5	1804077	235145
10.44	3MC5	935566	122953
11.61	nC6	4318691	487366
13.71	MCYC5	1628880	188659
14.10	24DMC5	204401	27343
14.55	223TMC4	21805	2953
15.86	Benzene	4177	470
16.48	33DMC5	45146	6020
16.80	CYC6	2031420	256409
17.89	2MC6	1538496	200502
18.03	23DMC5	Peak co-elutes with 2MC6	
18.29	11DMCYC5	109738	15803
18.86	3MC6	1667304	206068
19.51	1c3DMCYC5	585541	72847
19.83	1t3DMCYC5	540061	66615
20.16	1t2DMCYC5	733512	83308
21.92	nC7	6067901	667547
24.60	MCYC6	9274503	903512
25.11	22DMC6	242209	23781
26.47	ECYC5	507807	51730
26.89	25DMC6	199636	20059
27.20	24DMC6	231150	22920
28.06	223TMC5	196277	18747
30.03	234TMC5	12847	1074
30.66	Toluene	49237	3719
33.99	2MC7	1151569	90189
36.13	3MC7	762906	56173
42.89	1c4DMCYC6	309798	19091
43.47	nC8	2779450	173439