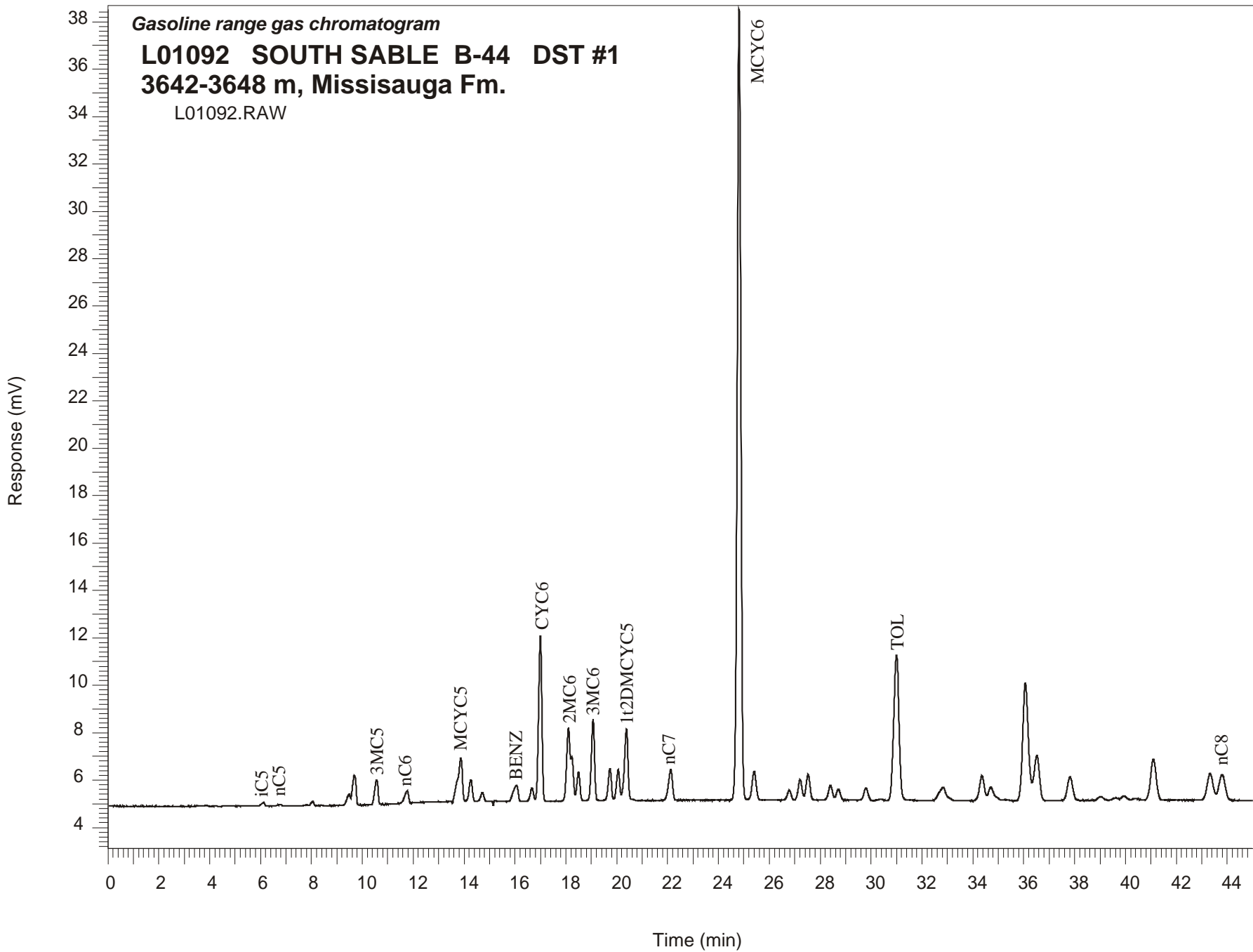


**Gasoline range gas chromatogram**  
**L01092 SOUTH SABLE B-44 DST #1**  
**3642-3648 m, Missisauga Fm.**  
L01092.RAW



## SOUTH SABLE B-44 GSC #L01092, DST#1 Gasoline Range Gas Chromatogram Report

RET TIME [min]	PEAK	AREA	HEIGHT [uV]
6.10	iC5	161	14
6.81	nC5	649	72
8.05	22DMC4	1306	174
9.48	23DMC4	4164	468
9.69	2MC5	12277	1241
10.57	3MC5	9610	1026
11.76	nC6	5480	520
13.87	MCYC5	25492	1892
14.27	24DMC5	8518	931
14.72	223TMC4	3055	355
16.06	Benzene	8914	680
16.67	33DMC5	4783	558
17.00	CYC6	61731	6968
18.10	2MC6	29458	3081
18.23	23DMC5	11793	1852
18.50	11DMCYC5	10451	1219
19.07	3MC6	29526	3436
19.73	1c3DMCYC5	11382	1333
20.05	1t3DMCYC5	10964	1276
20.38	1t2DMCYC5	28320	2958
22.12	nC7	14140	1304
24.81	MCYC6	332847	33349
25.41	22DMC6	13339	1215
26.79	ECYC5	4095	404
27.21	25DMC6	8983	854
27.53	24DMC6	11430	1083
28.41	223TMC5	6826	624
30.36	234TMC5	471	55
31.00	Toluene	87704	6111
34.35	2MC7	12863	1005
36.52	3MC7	28515	1912
43.32	1c4DMCYC6	18348	1120
43.79	nC8	18520	1080