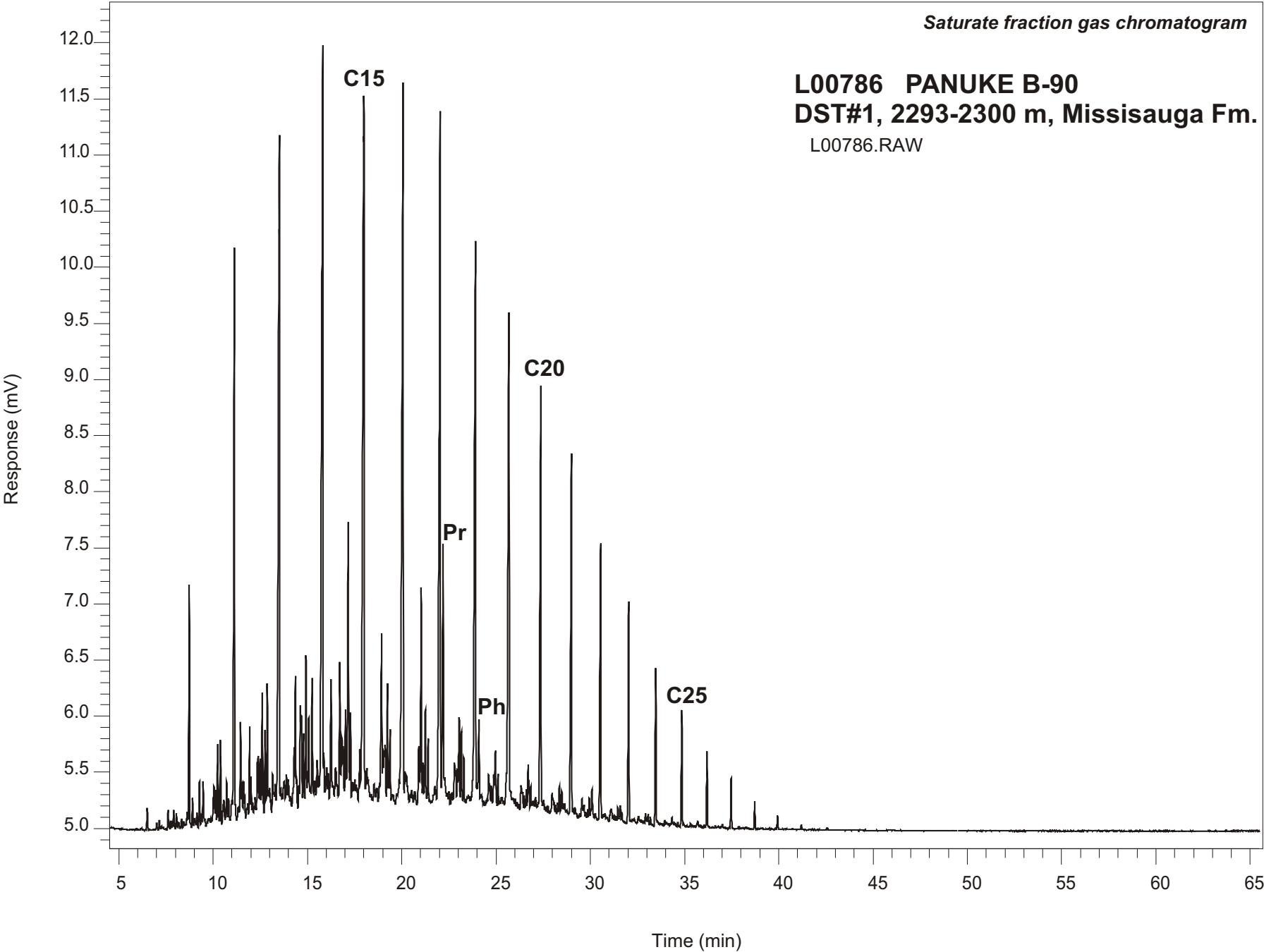


*Saturate fraction gas chromatogram*

**L00786 PANUKE B-90**  
**DST#1, 2293-2300 m, Missisauga Fm.**  
L00786.RAW



**PANUKE B-90**  
**GSC #L00786, DST#1**  
**Saturate Fraction Gas Chromatogram Report**

<b>RET TIME [min]</b>	<b>PEAK</b>	<b>AREA</b>	<b>HEIGHT [uV]</b>
11.12	C12	16172	5088
13.51	C13	26932	5988
15.81	C14	31602	6741
18.00	C15	31609	5920
20.07	C16	30996	6418
22.04	C17	29295	6176
22.19	Pr	8277	2361
23.91	C18	24359	5108
24.09	Ph	2764	748
25.69	C19	19674	4339
27.38	C20	14654	3790
29.00	C21	11378	3263
30.55	C22	8449	2448
32.03	C23	6322	1975
33.47	C24	4210	1405
34.85	C25	2970	1029
36.18	C26	1863	676
37.47	C27	1176	446
38.72	C28	665	247
39.93	C29	363	123
41.20	C30	112	39