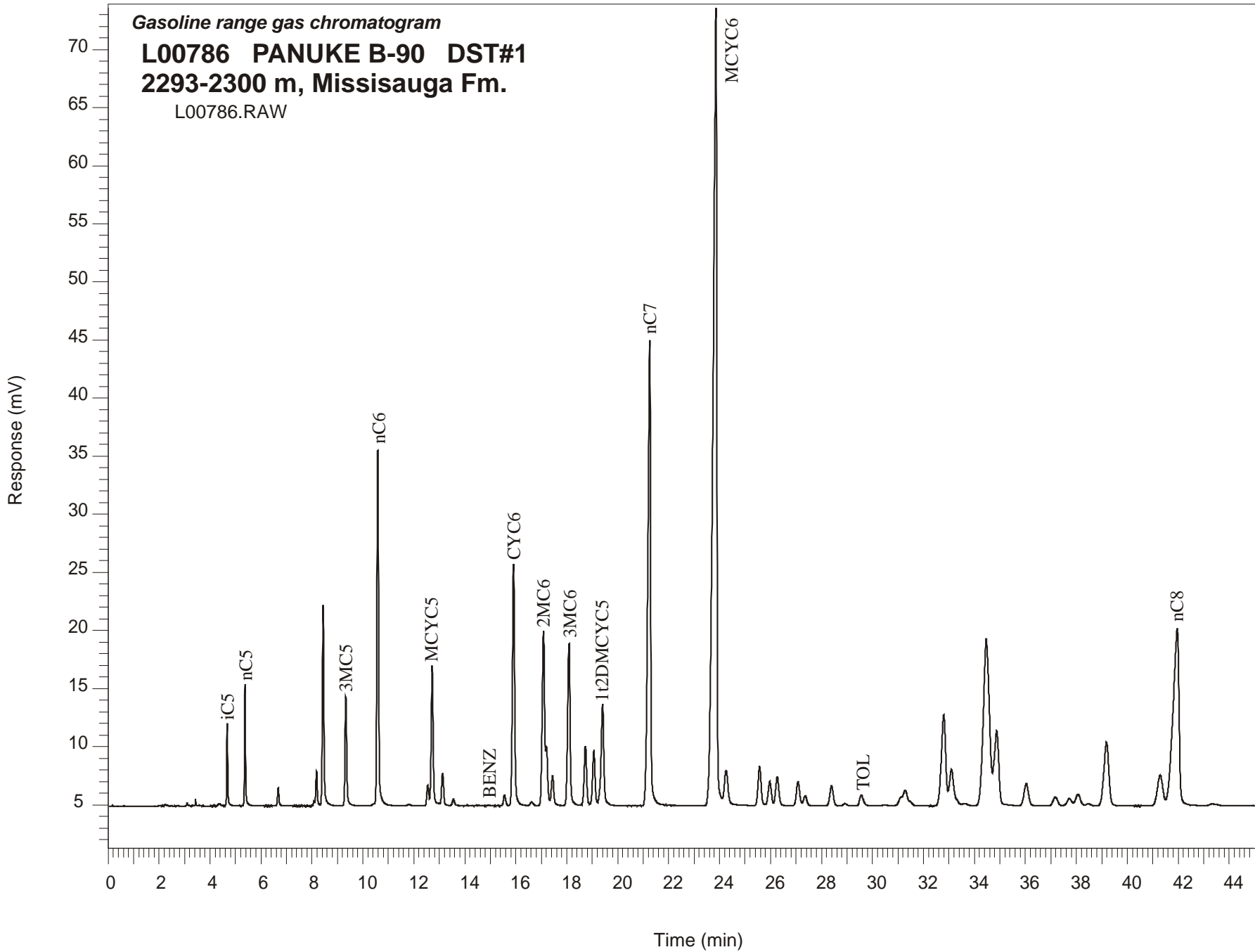


Gasoline range gas chromatogram
L00786 PANUKE B-90 DST#1
2293-2300 m, Missisauga Fm.
L00786.RAW



PANUKE B-90 GSC #L00786, DST#1 Gasoline Range Gas Chromatogram Report

RET TIME [min]	PEAK	AREA	HEIGHT [uV]
4.68	iC5	19050	7089
5.37	nC5	29276	10476
6.68	22DMC4	6153	1563
8.08	CYC5	1297	401
8.18	23DMC4	13049	2994
8.44	2MC5	74149	17247
9.33	3MC5	43689	9355
10.58	nC6	143752	30653
12.55	22DMC5	9783	1792
12.72	MCYC5	64966	11994
13.13	24DMC5	14780	2729
13.55	223TMC4	3336	580
15.56	CYC6	5941	939
15.91	2MC6	127985	20873
17.20	23DMC5	27365	5047
17.44	11DMCYC5	17477	2532
18.08	3MC6	96048	13989
18.73	1c3DMCYC5	33796	5095
19.06	1t3DMCYC5	30146	4623
19.40	1t2DMCYC5	62529	8536
21.25	nC7	299789	39966
23.86	MCYC6	726015	68537
24.26	22DMC6	30093	2959
25.57	ECYC5	27948	3386
25.97	25DMC6	17697	2072
26.26	24DMC6	21446	2459
27.08	223TMC5	19033	2073
28.93	234TMC5	1464	164
29.57	Toluene	9558	916
32.80	2MC7	93448	7796
34.88	3MC7	80873	6359
41.28	1c4DMCYC6	21992	2630
41.96	nC8	253264	15190