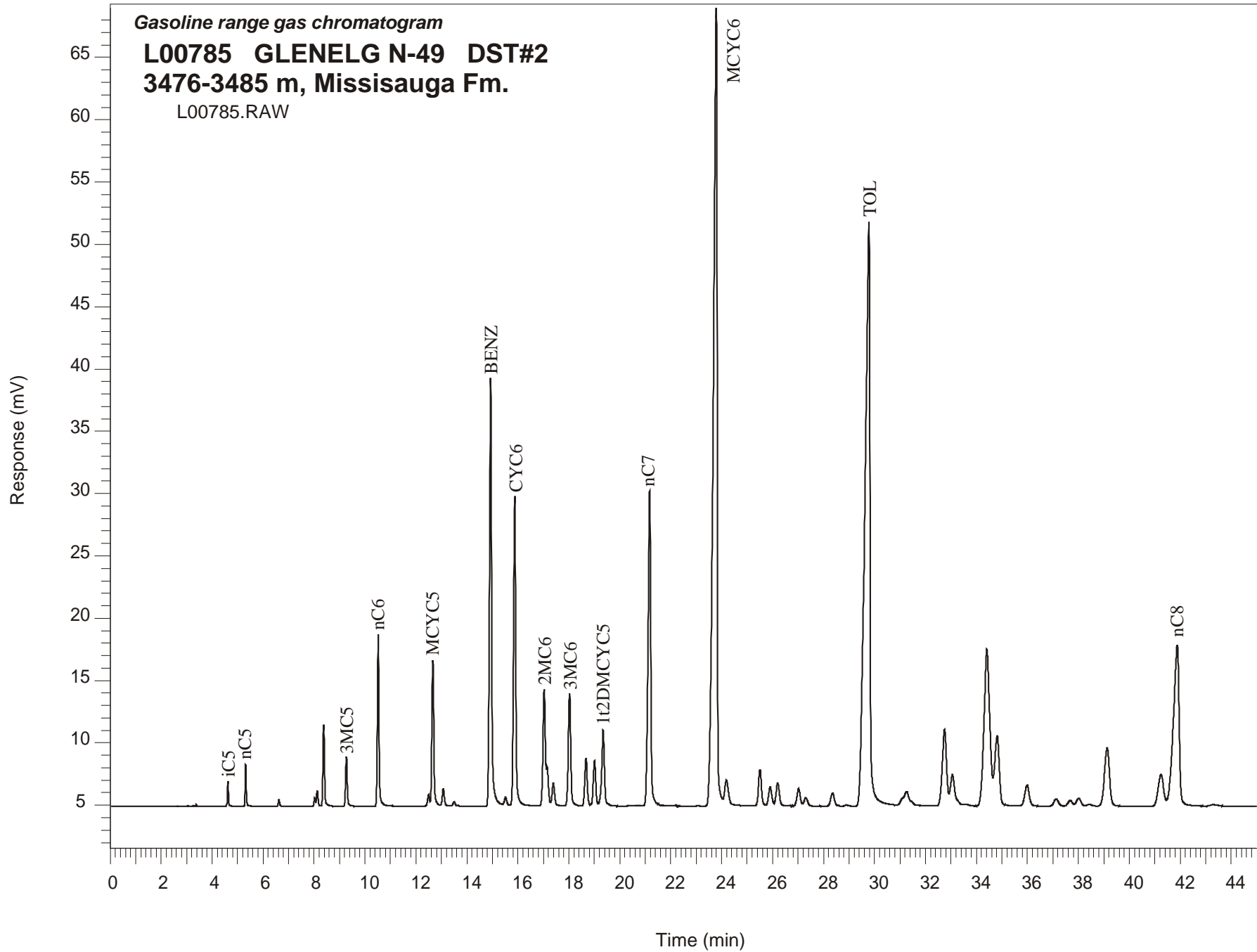


Gasoline range gas chromatogram

L00785 GLENELG N-49 DST#2
3476-3485 m, Missisauga Fm.

L00785.RAW



**GLENELG N-49 GSC #L00785, DST#2
Gasoline Range Gas Chromatogram Report**

RET TIME [min]	PEAK	AREA	HEIGHT [uV]
4.62	iC5	5493	1996
5.32	nC5	9260	3373
6.62	22DMC4	2030	554
8.03	CYC5	2325	666
8.12	23DMC4	5470	1268
8.38	2MC5	27510	6569
9.27	3MC5	18388	4006
10.52	nC6	64484	13783
12.49	22DMC5	4913	913
12.66	MCYC5	63098	11705
13.07	24DMC5	8324	1395
13.50	223TMC4	2137	363
14.93	Benzene	205358	34343
15.51	33DMC5	4973	667
15.88	CYC6	151543	24807
17.03	2MC6	59718	9350
17.15	23DMC5	16431	3145
17.39	11DMCYC5	12715	1828
18.03	3MC6	58988	9002
18.67	1c3DMCYC5	25130	3861
19.01	1t3DMCYC5	23995	3637
19.34	1t2DMCYC5	44883	6087
21.17	nC7	191255	25299
23.79	MCYC6	692610	63974
24.19	22DMC6	21359	2012
25.51	ECYC5	23900	2943
25.90	25DMC6	13415	1527
26.20	24DMC6	16482	1840
27.02	223TMC5	12655	1423
28.91	234TMC5	688	74
29.78	Toluene	648243	46902
32.75	2MC7	71817	6107
34.82	3MC7	72059	5640
41.25	1c4DMCYC6	37631	2528
41.88	nC8	202534	12888