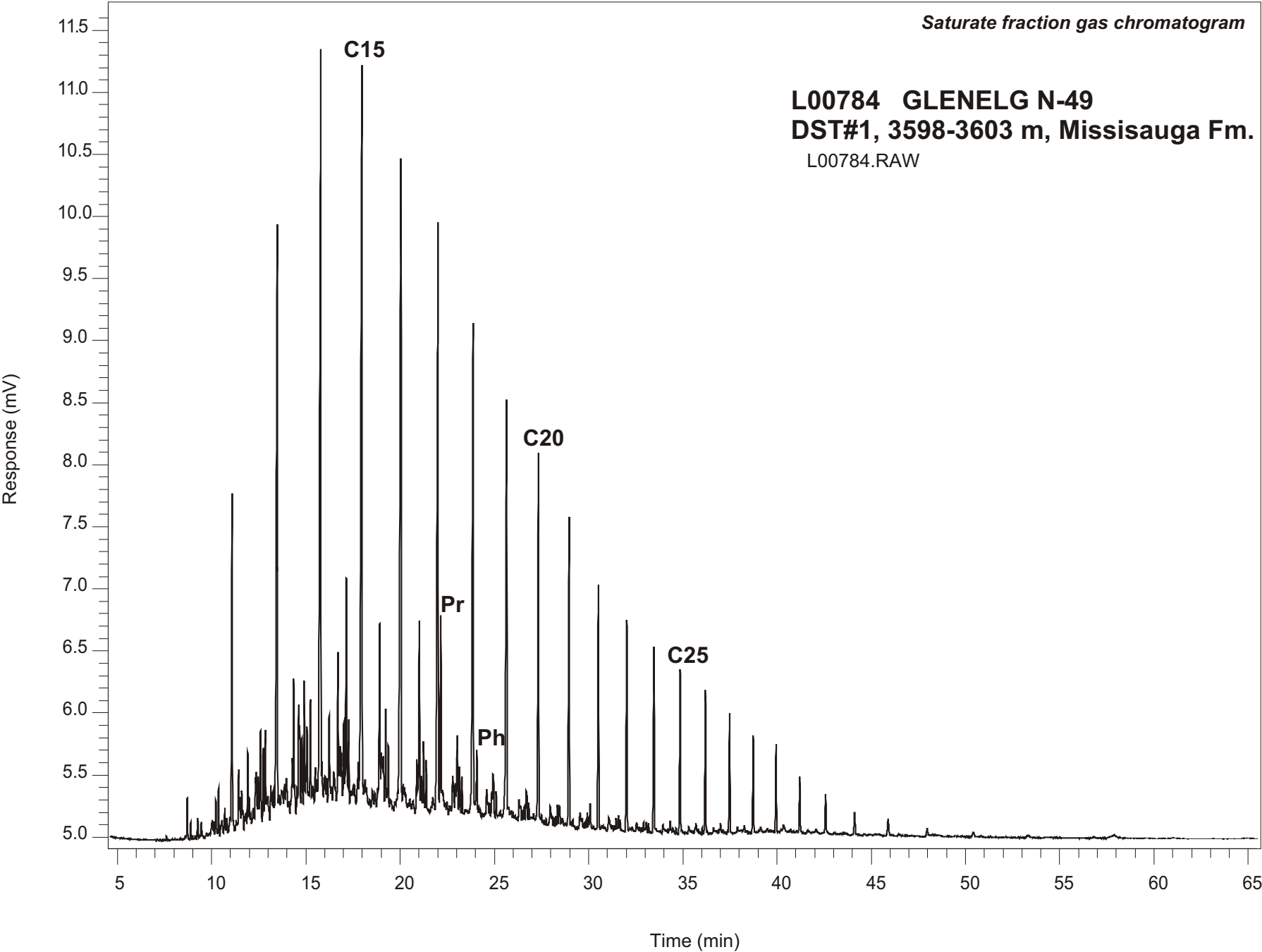


Saturate fraction gas chromatogram

L00784 GLENELG N-49
DST#1, 3598-3603 m, Missisauga Fm.
L00784.RAW



GLENELG N-49
GSC #L00784, DST#1
Saturate Fraction Gas Chromatogram Report

| RET TIME [min] | PEAK | AREA | HEIGHT [uV] |
|----------------|------|-------|-------------|
| 11.08 | C12 | 6944 | 2662 |
| 13.48 | C13 | 18790 | 4731 |
| 15.79 | C14 | 26400 | 6214 |
| 17.97 | C15 | 27310 | 6030 |
| 20.04 | C16 | 23947 | 5279 |
| 22.01 | C17 | 20853 | 4839 |
| 22.16 | Pr | 5436 | 1602 |
| 23.87 | C18 | 15660 | 3912 |
| 24.07 | Ph | 1400 | 472 |
| 25.65 | C19 | 13054 | 3343 |
| 27.34 | C20 | 10118 | 2957 |
| 28.97 | C21 | 8155 | 2495 |
| 30.52 | C22 | 6636 | 1968 |
| 32.02 | C23 | 5638 | 1697 |
| 33.46 | C24 | 4572 | 1476 |
| 34.85 | C25 | 3916 | 1320 |
| 36.19 | C26 | 3255 | 1149 |
| 37.48 | C27 | 2882 | 972 |
| 38.74 | C28 | 2373 | 785 |
| 39.95 | C29 | 2060 | 710 |
| 41.21 | C30 | 1482 | 451 |
| 42.58 | C31 | 1049 | 311 |
| 44.12 | C32 | 707 | 178 |