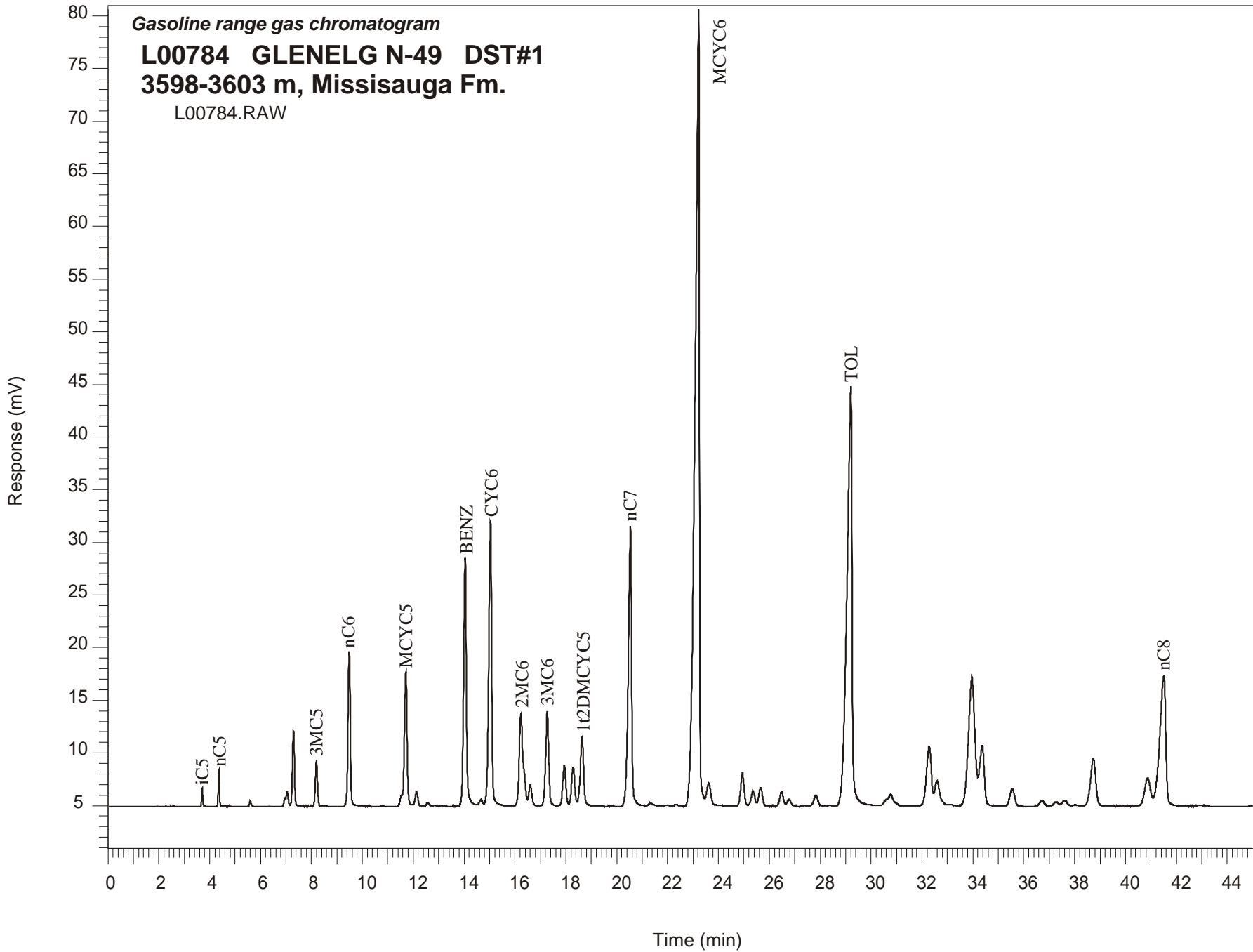


Gasoline range gas chromatogram
L00784 GLENELG N-49 DST#1
3598-3603 m, Missisauga Fm.
L00784.RAW



**GLENELG N-49 GSC #L00784, DST#1
Gasoline Range Gas Chromatogram Report**

RET TIME [min]	PEAK	AREA	HEIGHT [uV]
3.71	iC5	5348	1772
4.36	nC5	11088	3465
5.60	22DMC4	2556	545
6.96	CYC5	3043	796
7.05	23DMC4	7935	1369
7.29	2MC5	38861	7173
8.20	3MC5	25740	4378
9.48	nC6	92312	14655
11.54	22DMC5	5314	1043
11.71	MCYC5	92590	12748
12.13	24DMC5	11109	1420
12.58	223TMC4	2400	330
14.04	Benzene	179036	23572
14.66	33DMC5	5629	607
15.04	CYC6	218179	27002
16.24	2MC6	97471	8807
16.36	23DMC5	Peak co-elutes with 2MC6	
16.60	11DMCYC5	17382	2002
17.27	3MC6	75556	9008
17.94	1c3DMCYC5	33503	3859
18.29	1t3DMCYC5	32305	3634
18.64	1t2DMCYC5	59611	6583
20.54	nC7	241889	26592
23.22	MCYC6	900926	75773
23.62	22DMC6	24303	2132
24.95	ECYC5	29640	3187
25.36	25DMC6	14725	1448
25.66	24DMC6	17879	1750
26.48	223TMC5	14173	1359
28.36	234TMC5	589	66
29.21	Toluene	555713	39772
32.28	2MC7	75298	5660
34.37	3MC7	75348	5718
40.87	1c4DMCYC6	41482	2584
41.51	nC8	201339	12302