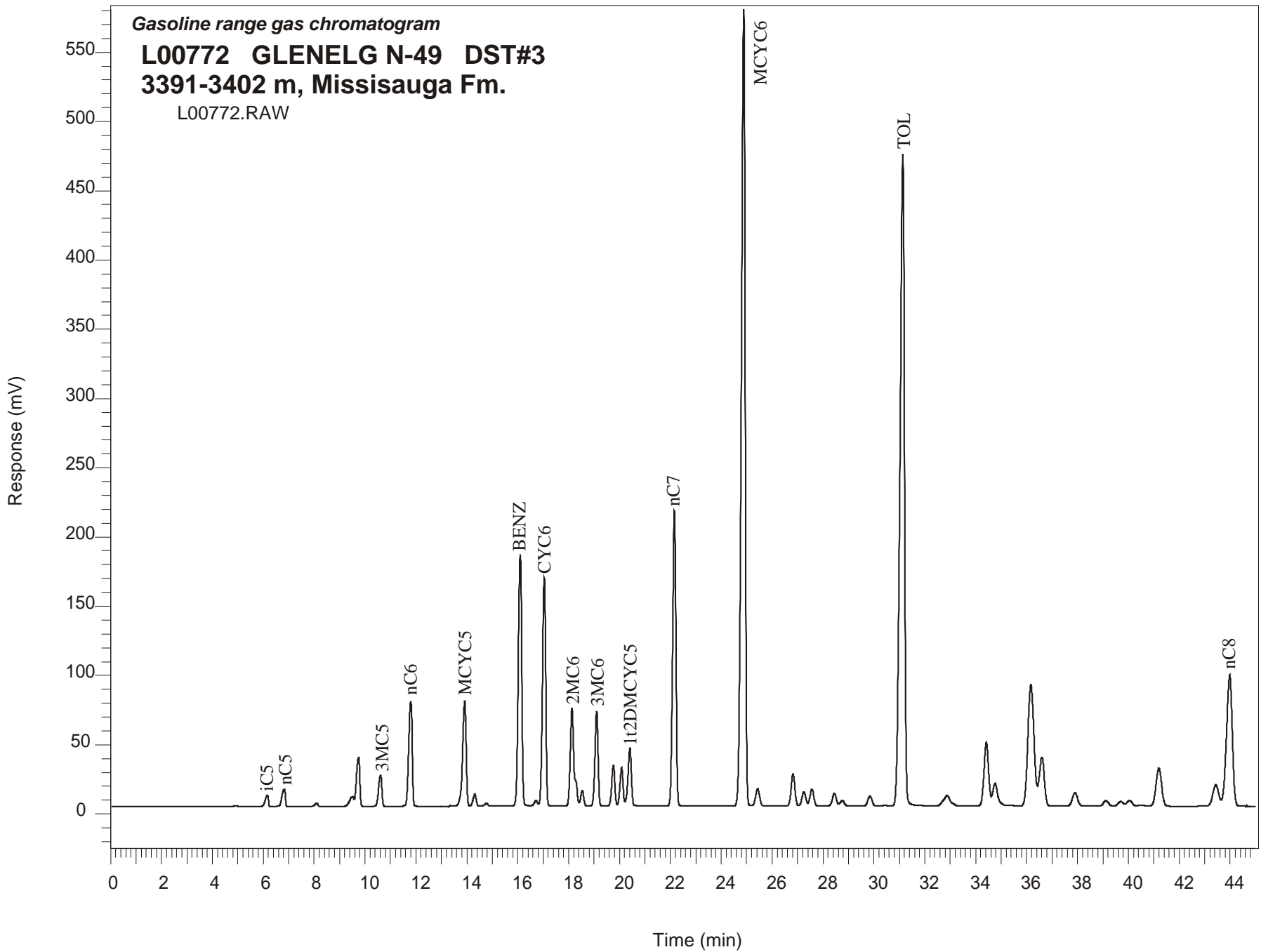


Gasoline range gas chromatogram
L00772 GLENELG N-49 DST#3
3391-3402 m, Missisauga Fm.
L00772.RAW



**GLENELG N-49 GSC #L00772, DST#3
Gasoline Range Gas Chromatogram Report**

| RET TIME [min] | PEAK | AREA | HEIGHT [uV] |
|----------------|-----------|--------------------------|-------------|
| 6.16 | iC5 | 69809 | 8108 |
| 6.82 | nC5 | 117948 | 12183 |
| 8.10 | 22DMC4 | 18249 | 2416 |
| 9.52 | 23DMC4 | 85352 | 7041 |
| 9.74 | 2MC5 | 324124 | 35526 |
| 10.61 | 3MC5 | 208482 | 22616 |
| 11.79 | nC6 | 735456 | 75790 |
| 13.92 | MCYC5 | 747300 | 75997 |
| 14.31 | 24DMC5 | 74295 | 8625 |
| 14.77 | 223TMC4 | 18820 | 2100 |
| 16.10 | Benzene | 1731786 | 181685 |
| 16.72 | 33DMC5 | 36490 | 3958 |
| 17.04 | CYC6 | 1449976 | 165056 |
| 18.13 | 2MC6 | 751767 | 70743 |
| 18.38 | 23DMC5 | Peak co-elutes with 2MC6 | |
| 18.54 | 11DMCYC5 | 94451 | 11230 |
| 19.10 | 3MC6 | 584235 | 68426 |
| 19.76 | 1c3DMCYC5 | 248599 | 29262 |
| 20.08 | 1t3DMCYC5 | 235620 | 27510 |
| 20.41 | 1t2DMCYC5 | 381351 | 41593 |
| 22.16 | nC7 | 1955998 | 213289 |
| 24.89 | MCYC6 | 5973208 | 575376 |
| 25.43 | 22DMC6 | 140162 | 12673 |
| 26.83 | ECYC5 | 240779 | 23028 |
| 27.25 | 25DMC6 | 109828 | 10310 |
| 27.57 | 24DMC6 | 128891 | 12113 |
| 28.45 | 223TMC5 | 102803 | 9204 |
| 29.84 | 234TMC5 | 84530 | 7264 |
| 31.14 | Toluene | 5754227 | 470212 |
| 34.42 | 2MC7 | 584333 | 45960 |
| 36.60 | 3MC7 | 498403 | 35240 |
| 43.44 | 1c4DMCYC6 | 251386 | 15312 |
| 43.98 | nC8 | 1518250 | 94848 |