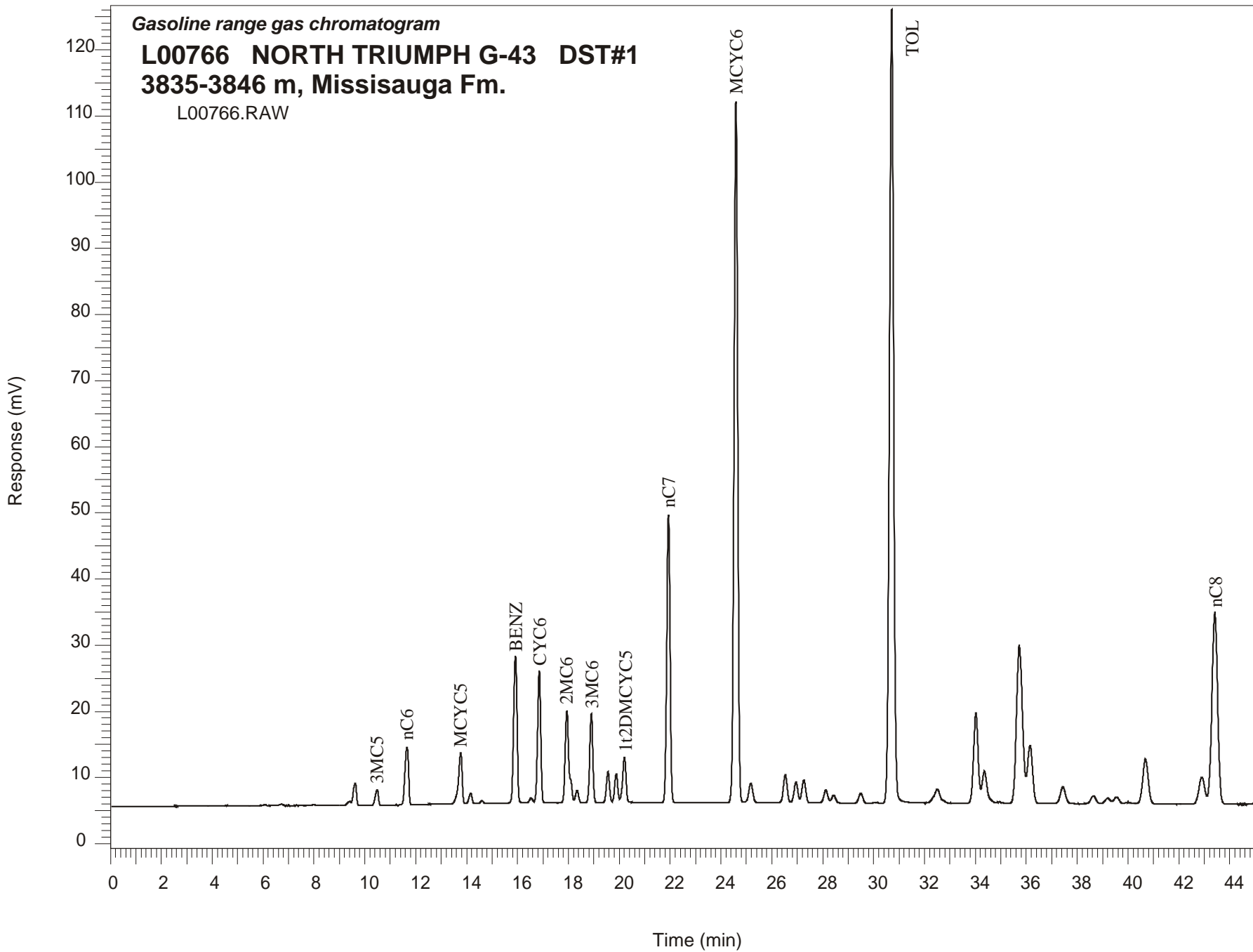


Gasoline range gas chromatogram
L00766 NORTH TRIUMPH G-43 DST#1
3835-3846 m, Missisauga Fm.
L00766.RAW



NORTH TRIUMPH G-43 GSC #L00766, DST#1 Gasoline Range Gas Chromatogram Report

RET TIME [min]	PEAK	AREA	HEIGHT [uV]
6.09	iC5	1075	133
6.72	nC5	1941	215
8.00	22DMC4	1025	154
9.41	23DMC4	5299	604
9.62	2MC5	29934	3300
10.48	3MC5	20405	2292
11.66	nC6	84356	8688
13.77	MCYC5	78242	7700
14.16	24DMC5	13523	1593
14.60	223TMC4	3354	409
15.92	Benzene	208143	22249
16.53	33DMC5	6260	737
16.86	CYC6	173090	19989
17.94	2MC6	146049	13994
18.08	23DMC5	Peak co-elutes with 2MC6	
18.34	11DMCYC5	15757	1891
18.90	3MC6	113261	13421
19.56	1c3DMCYC5	39430	4682
19.88	1t3DMCYC5	36651	4312
20.21	1t2DMCYC5	62388	6758
21.93	nC7	388176	43606
24.59	MCYC6	1048027	106024
25.18	22DMC6	32810	2957
26.53	ECYC5	43572	4265
26.95	25DMC6	32124	3085
27.26	24DMC6	36035	3465
28.12	223TMC5	21123	1952
30.09	234TMC5	1703	152
30.71	Toluene	1382096	119959
34.02	2MC7	171094	13602
36.15	3MC7	122865	8764
42.89	1c4DMCYC6	65471	4068
43.41	nC8	451263	29041