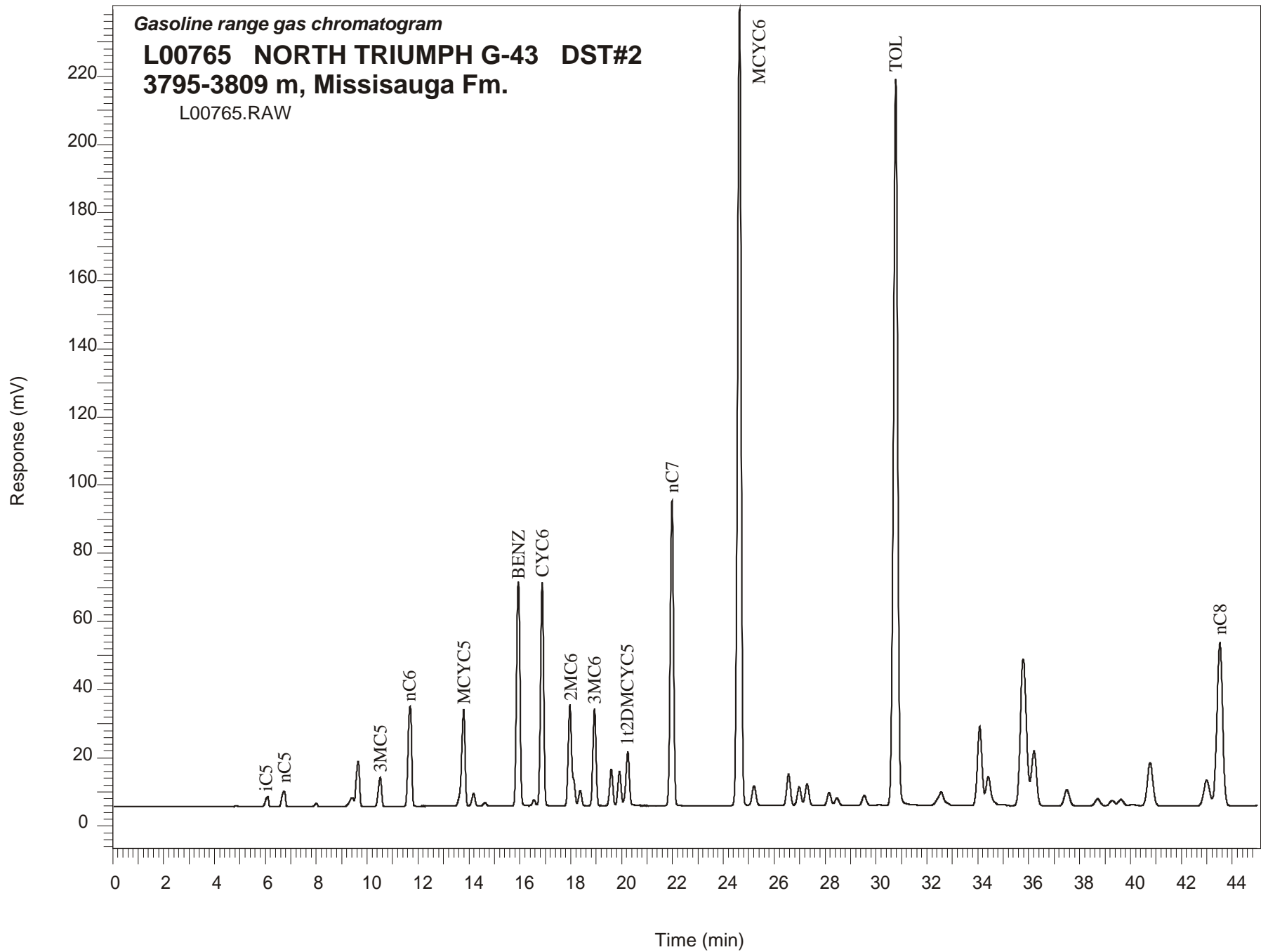


Gasoline range gas chromatogram

L00765 NORTH TRIUMPH G-43 DST#2
3795-3809 m, Missisauga Fm.

L00765.RAW



NORTH TRIUMPH G-43 GSC #L00765, DST#2 Gasoline Range Gas Chromatogram Report

RET TIME [min]	PEAK	AREA	HEIGHT [uV]
6.09	iC5	24647	2909
6.73	nC5	42576	4420
8.01	22DMC4	6607	952
9.43	23DMC4	29710	2600
9.65	2MC5	120924	13179
10.52	3MC5	78093	8642
11.69	nC6	283186	29384
13.79	MCYC5	273183	28192
14.18	24DMC5	31625	3762
14.63	223TMC4	8217	1003
15.94	Benzene	608742	65711
16.56	33DMC5	13589	1691
16.88	CYC6	560605	65493
17.97	2MC6	309838	29741
18.11	23DMC5	Peak co-elutes with 2MC6	
18.37	11DMCYC5	36813	4447
18.94	3MC6	240463	28552
19.60	1c3DMCYC5	90065	10758
19.92	1t3DMCYC5	84319	10009
20.24	1t2DMCYC5	141610	15622
21.98	nC7	791793	89322
24.64	MCYC6	2291060	233434
25.21	22DMC6	62461	5766
26.57	ECYC5	93318	9205
26.98	25DMC6	56849	5538
27.29	24DMC6	65929	6306
28.16	223TMC5	40212	3745
30.13	234TMC5	3258	288
30.78	Toluene	2473967	213180
34.08	2MC7	291697	23229
36.21	3MC7	223740	16164
42.99	1c4DMCYC6	120924	7619
43.51	nC8	744213	47932