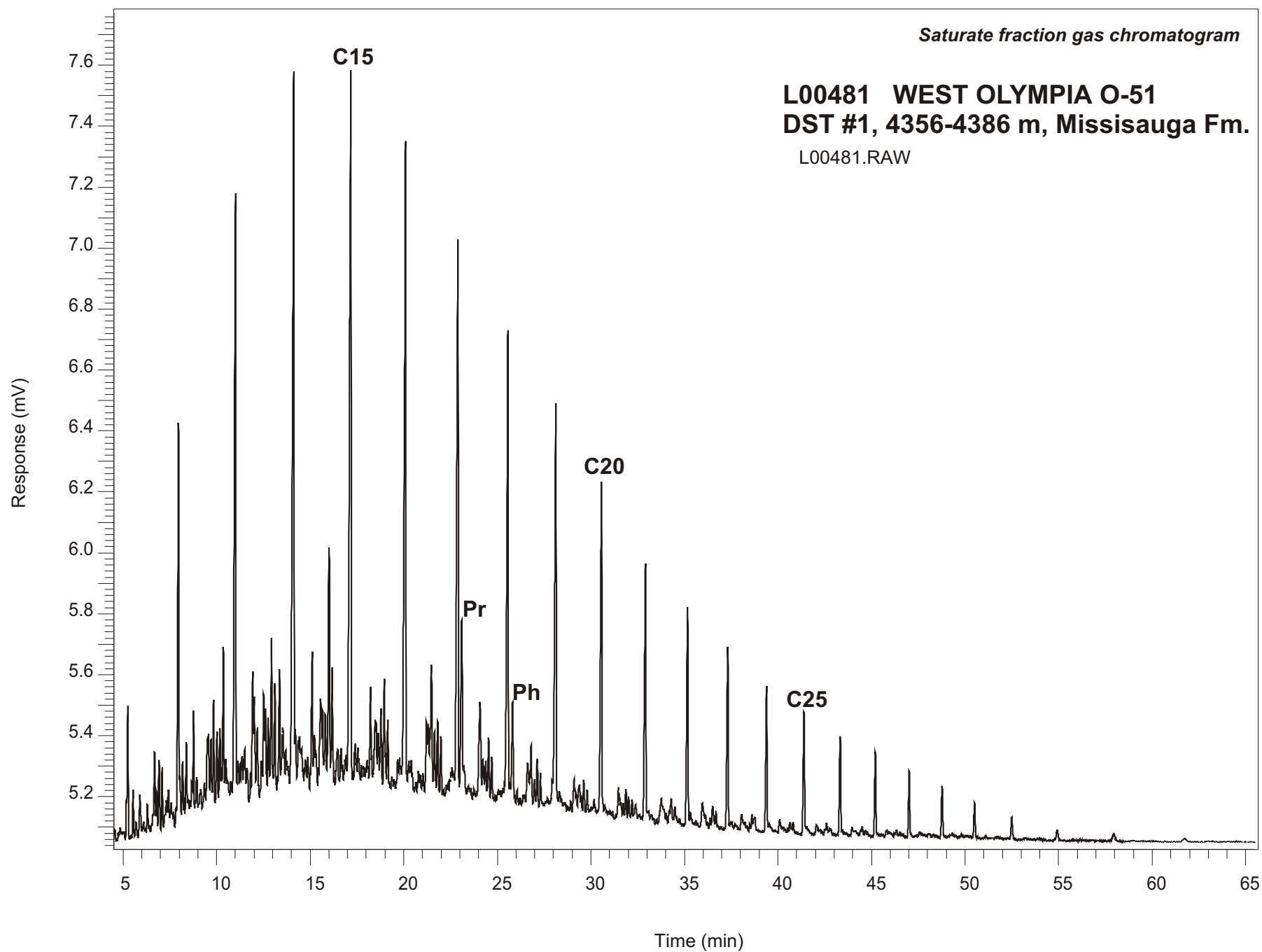


*Saturate fraction gas chromatogram*

**L00481 WEST OLYMPIA O-51  
DST #1, 4356-4386 m, Missisauga Fm.**

L00481.RAW



**WEST OLYMPIA O-51  
GSC #L00481, DST#1  
Saturate Fraction Gas Chromatogram Report**

<b>RET TIME [min]</b>	<b>PEAK</b>	<b>AREA</b>	<b>HEIGHT [uV]</b>
7.96	C12	5754	1310
11.01	C13	10405	1997
14.12	C14	13830	2327
17.17	C15	13693	2339
20.09	C16	11530	2071
22.89	C17	10037	1790
23.09	Pr	2939	529
25.56	C18	8246	1527
25.81	Ph	1567	310
28.12	C19	6952	1310
30.57	C20	5129	1060
32.91	C21	4159	823
35.16	C22	3370	704
37.32	C23	2767	589
39.39	C24	2222	470
41.39	C25	1847	393
43.33	C26	1475	318
45.20	C27	1216	270
47.01	C28	944	213
48.77	C29	766	166
50.50	C30	518	115
52.49	C31	357	70