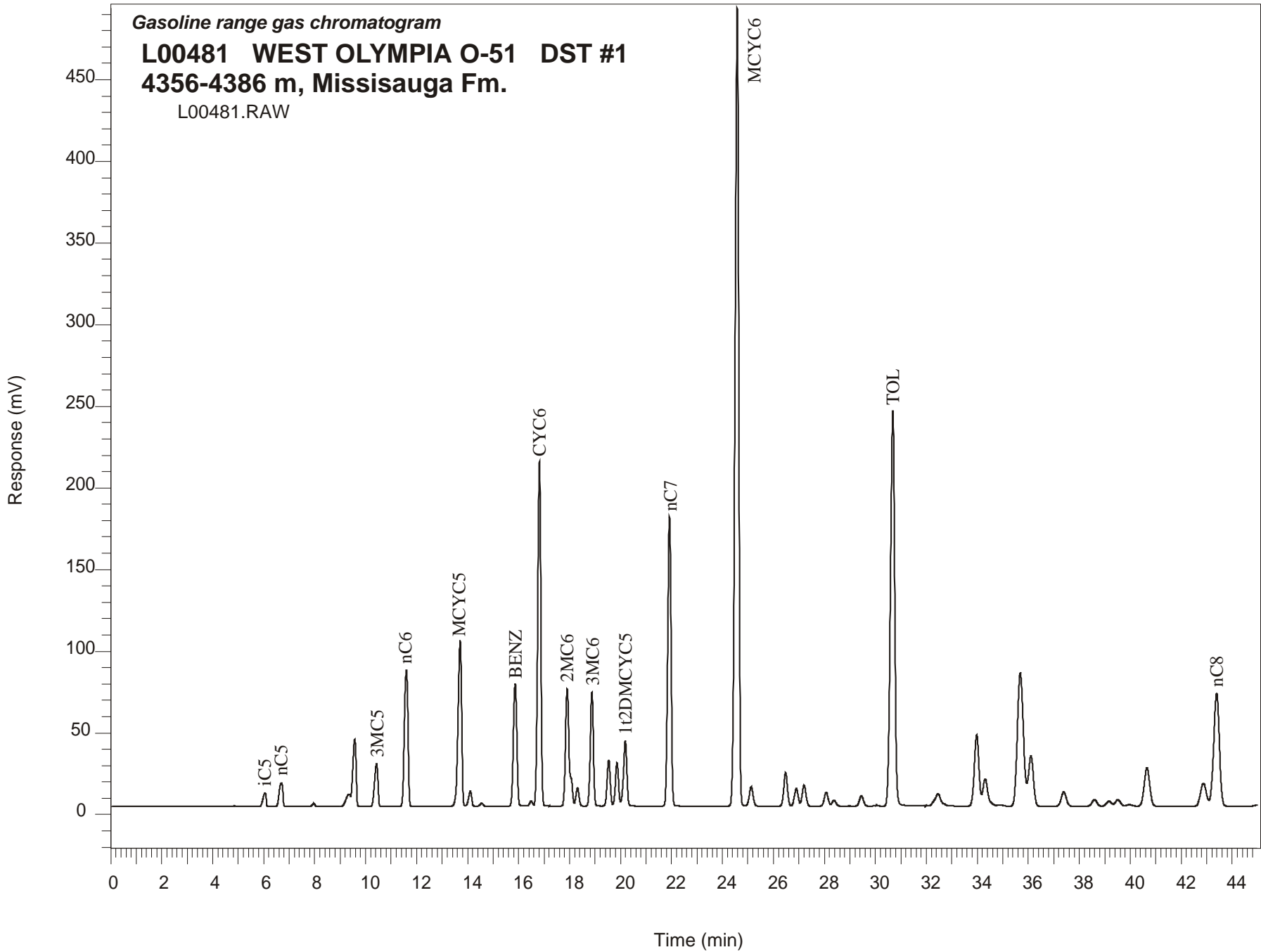


Gasoline range gas chromatogram

L00481 WEST OLYMPIA O-51 DST #1
4356-4386 m, Missisauga Fm.

L00481.RAW



WEST OLYMPIA O-51 GSC #L00481, DST#1
Gasoline Range Gas Chromatogram Report

RET TIME [min]	PEAK	AREA	HEIGHT [uV]
6.06	iC5	70276	8271
6.69	nC5	141304	14296
7.97	22DMC4	12735	1920
9.36	23DMC4	90082	7525
9.57	2MC5	377761	41068
10.43	3MC5	238816	26070
11.60	nC6	825478	83315
13.71	MCYC5	981497	101746
14.10	24DMC5	77573	9101
14.55	223TMC4	15185	1872
15.87	Benzene	729906	75120
16.49	33DMC5	25793	3146
16.82	CYC6	1839539	210748
17.91	2MC6	754201	71753
18.05	23DMC5	Peak co-elutes with 2MC6	
18.31	11DMCYC5	92900	11251
18.88	3MC6	595548	69657
19.54	1c3DMCYC5	241722	28261
19.86	1t3DMCYC5	226049	26323
20.19	1t2DMCYC5	361252	39744
21.92	nC7	1608723	177193
24.58	MCYC6	4893196	488301
25.13	22DMC6	126118	11878
26.48	ECYC5	208216	20500
26.90	25DMC6	111572	10836
27.21	24DMC6	133763	12824
28.07	223TMC5	93158	8581
30.02	234TMC5	5731	508
30.68	Toluene	2846116	241858
33.98	2MC7	555789	43969
36.10	3MC7	427005	30776
42.87	1c4DMCYC6	166291	11874
43.38	nC8	990569	66728