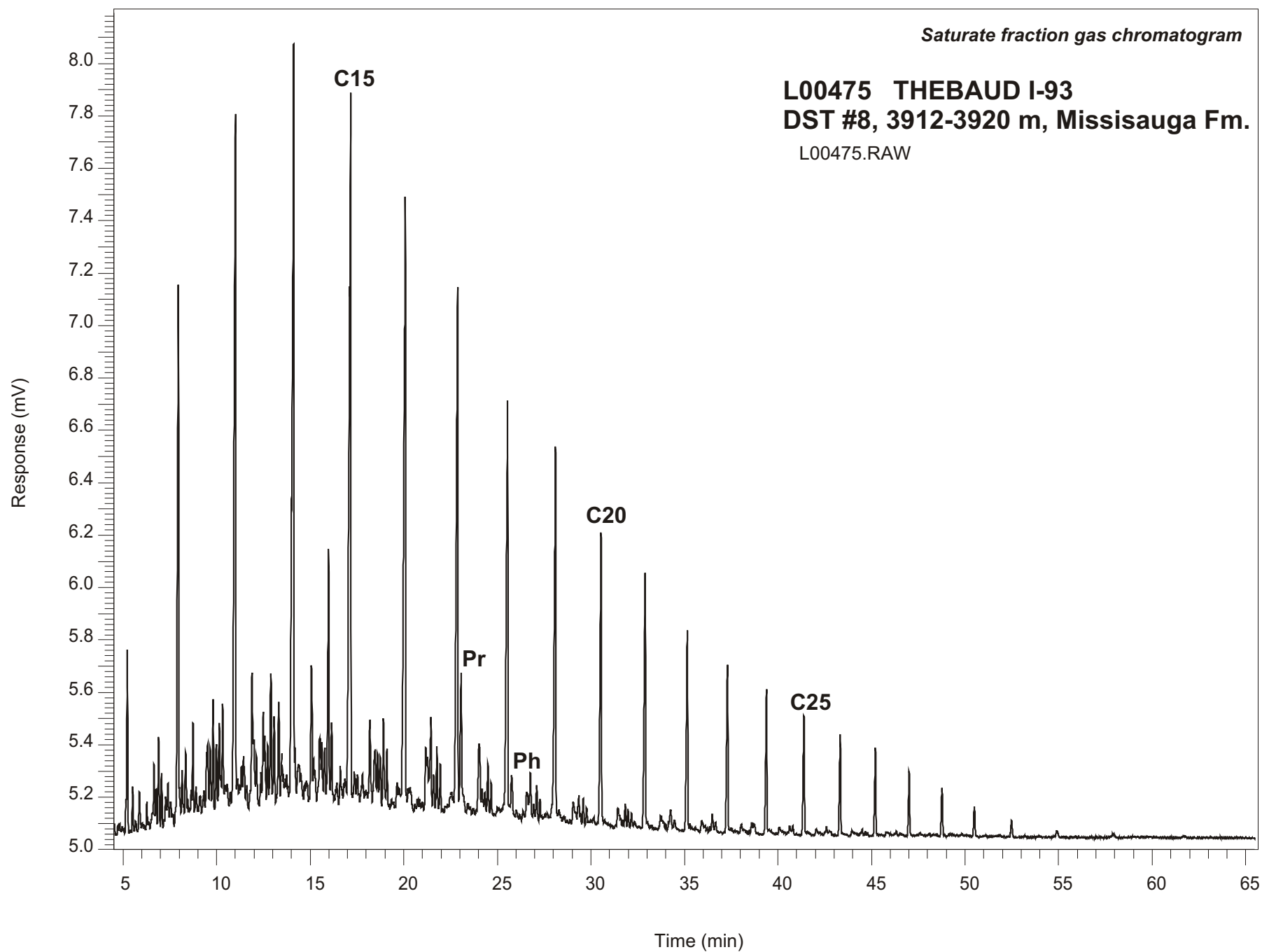


Saturate fraction gas chromatogram

L00475 THEBAUD I-93
DST #8, 3912-3920 m, Missisauga Fm.
L00475.RAW



THEBAUD I-93
GSC #L00475, DST#8
Saturate Fraction Gas Chromatogram Report

RET TIME [min]	PEAK	AREA	HEIGHT [uV]
7.95	C12	8384	1980
11.01	C13	15623	2662
14.12	C14	17548	2750
17.16	C15	16171	2633
20.08	C16	13902	2292
22.88	C17	11712	1965
23.06	Pr	2425	483
25.55	C18	9375	1575
25.76	Ph	900	148
28.10	C19	7593	1404
30.54	C20	5838	1108
32.90	C21	4609	962
35.15	C22	3755	760
37.31	C23	3103	633
39.38	C24	2492	545
41.39	C25	2145	449
43.33	C26	1696	382
45.20	C27	1443	332
47.01	C28	1069	245
48.76	C29	869	184
50.49	C30	540	115
52.48	C31	311	60