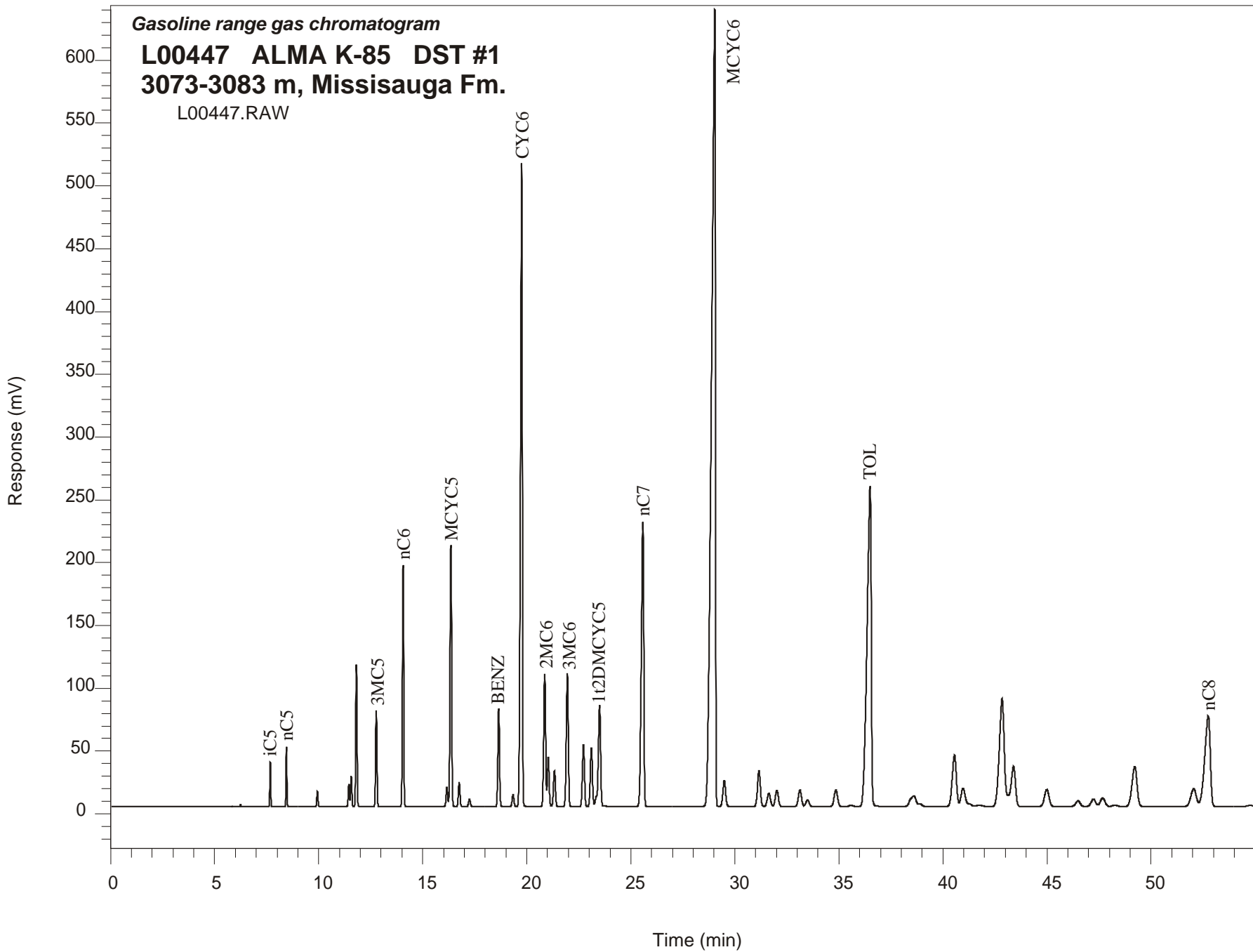


Gasoline range gas chromatogram
L00447 ALMA K-85 DST #1
3073-3083 m, Missisauga Fm.
L00447.RAW



ALMA K-85 GSC #L00447, DST#1 Gasoline Range Gas Chromatogram Report

RET TIME [min]	PEAK	AREA	HEIGHT [uV]
7.68	iC5	106252	35665
8.45	nC5	143603	47971
9.94	22DMC4	46863	12251
11.45	CYC5	72759	18104
11.56	23DMC4	103829	24363
11.81	2MC5	471150	113462
12.77	3MC5	340929	76409
14.06	nC6	866045	192319
16.16	22DMC5	84468	15448
16.35	MCYC5	1094591	208898
16.75	24DMC5	105637	19615
17.24	223TMC4	35093	5992
18.65	Benzene	432362	78340
19.34	33DMC5	62001	9593
19.75	CYC6	3281641	512414
20.86	2MC6	662640	105407
21.03	23DMC5	239092	39083
21.33	11DMCYC5	185770	28452
21.95	3MC6	701803	105885
22.72	1c3DMCYC5	340313	49210
23.11	1t3DMCYC5	326632	46330
23.50	1t2DMCYC5	642062	80806
25.58	nC7	1829035	226503
29.03	MCYC6	8454867	634557
29.49	22DMC6	191894	20772
31.16	ECYC5	279843	28601
31.64	25DMC6	112346	10592
32.02	24DMC6	134406	12896
33.13	223TMC5	146824	13416
35.59	234TMC5	14250	1105
36.50	Toluene	3596575	254838
40.56	2MC7	566058	41260
43.40	3MC7	497405	32252
52.04	1c4DMCYC6	266296	14209
52.74	nC8	861939	72039