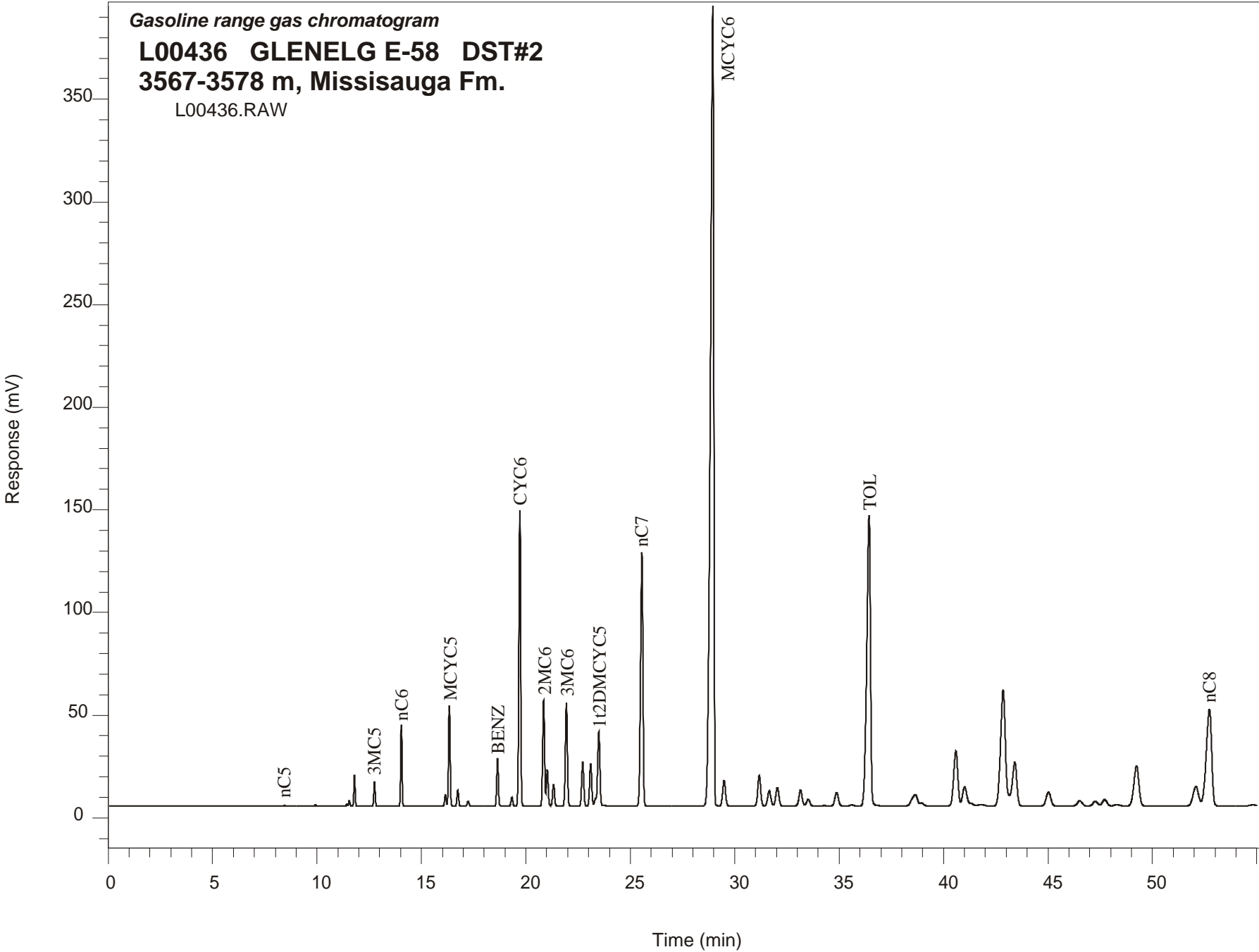


Gasoline range gas chromatogram
L00436 GLENLG E-58 DST#2
3567-3578 m, Missisauga Fm.
L00436.RAW



**GLENELG E-58 GSC #L00436, DST#2
Gasoline Range Gas Chromatogram Report**

RET TIME [min]	PEAK	AREA	HEIGHT [uV]
7.91	iC5	475	138
8.44	nC5	1293	407
9.92	22DMC4	2480	630
11.43	CYC5	3958	973
11.55	23DMC4	11952	2748
11.80	2MC5	63532	15061
12.75	3MC5	53516	11856
14.04	nC6	179870	39453
16.15	22DMC5	31199	5770
16.34	MCYC5	257360	48951
16.74	24DMC5	43034	7899
17.24	223TMC4	14012	2374
18.64	Benzene	128769	23168
19.33	33DMC5	26608	4241
19.71	CYC6	870012	144089
20.85	2MC6	322334	51588
21.02	23DMC5	112241	17798
21.32	11DMCYC5	70167	10519
21.94	3MC6	333763	50306
22.72	1c3DMCYC5	149232	21524
23.10	1t3DMCYC5	144877	20436
23.49	1t2DMCYC5	290983	36396
25.55	nC7	958447	123487
28.95	MCYC6	4310667	389685
29.50	22DMC6	120759	12553
31.18	ECYC5	146311	14885
31.66	25DMC6	77851	7360
32.05	24DMC6	94420	9044
33.16	223TMC5	85516	7805
35.61	234TMC5	6560	527
36.44	Toluene	1758620	141466
40.59	2MC7	367271	26973
43.41	3MC7	331090	21323
52.08	1c4DMCYC6	176838	9542
52.73	nC8	852281	47280