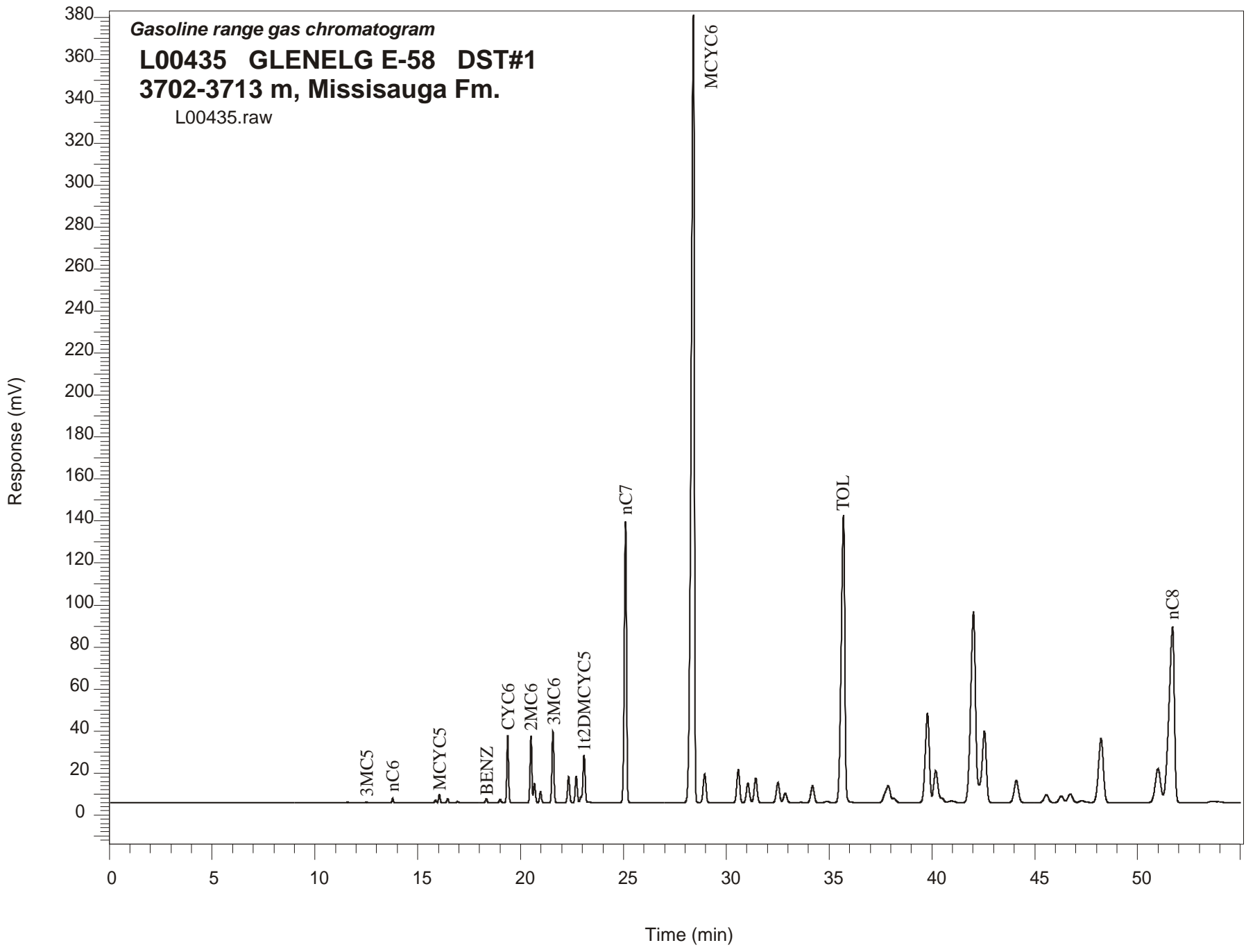


**Gasoline range gas chromatogram**  
**L00435 GLENLG E-58 DST#1**  
**3702-3713 m, Missisauga Fm.**  
L00435.raw



**GLENELG E-58 GSC #L00435, DST#1  
Gasoline Range Gas Chromatogram Report**

RET TIME [min]	PEAK	AREA	HEIGHT [uV]
7.51	iC5	152	24
9.73	22DMC4	210	57
11.33	23DMC4	556	135
11.57	2MC5	1480	362
12.51	3MC5	1792	406
13.78	nC6	9805	2198
15.87	22DMC5	6504	1216
16.05	MCYC5	21379	4132
16.45	24DMC5	10422	1934
16.94	223TMC4	3054	529
18.33	Benzene	10792	1994
19.01	33DMC5	9832	1603
19.37	CYC6	188802	31991
20.50	2MC6	194055	31762
20.67	23DMC5	57510	9361
20.97	11DMCYC5	34812	5321
21.57	3MC6	221223	34049
22.33	1c3DMCYC5	84257	12428
22.70	1t3DMCYC5	88064	12801
23.09	1t2DMCYC5	181208	22877
25.10	nC7	1024510	134166
28.40	MCYC6	3984504	375189
28.95	22DMC6	129702	13680
30.59	ECYC5	151660	15815
31.06	25DMC6	96935	9372
31.44	24DMC6	120483	11786
32.51	223TMC5	102798	9561
34.90	234TMC5	8063	661
35.70	Toluene	1660562	137109
39.78	2MC7	579236	42700
42.55	3MC7	511947	33988
51.00	1c4DMCYC6	296533	16178
51.70	nC8	1558568	83835