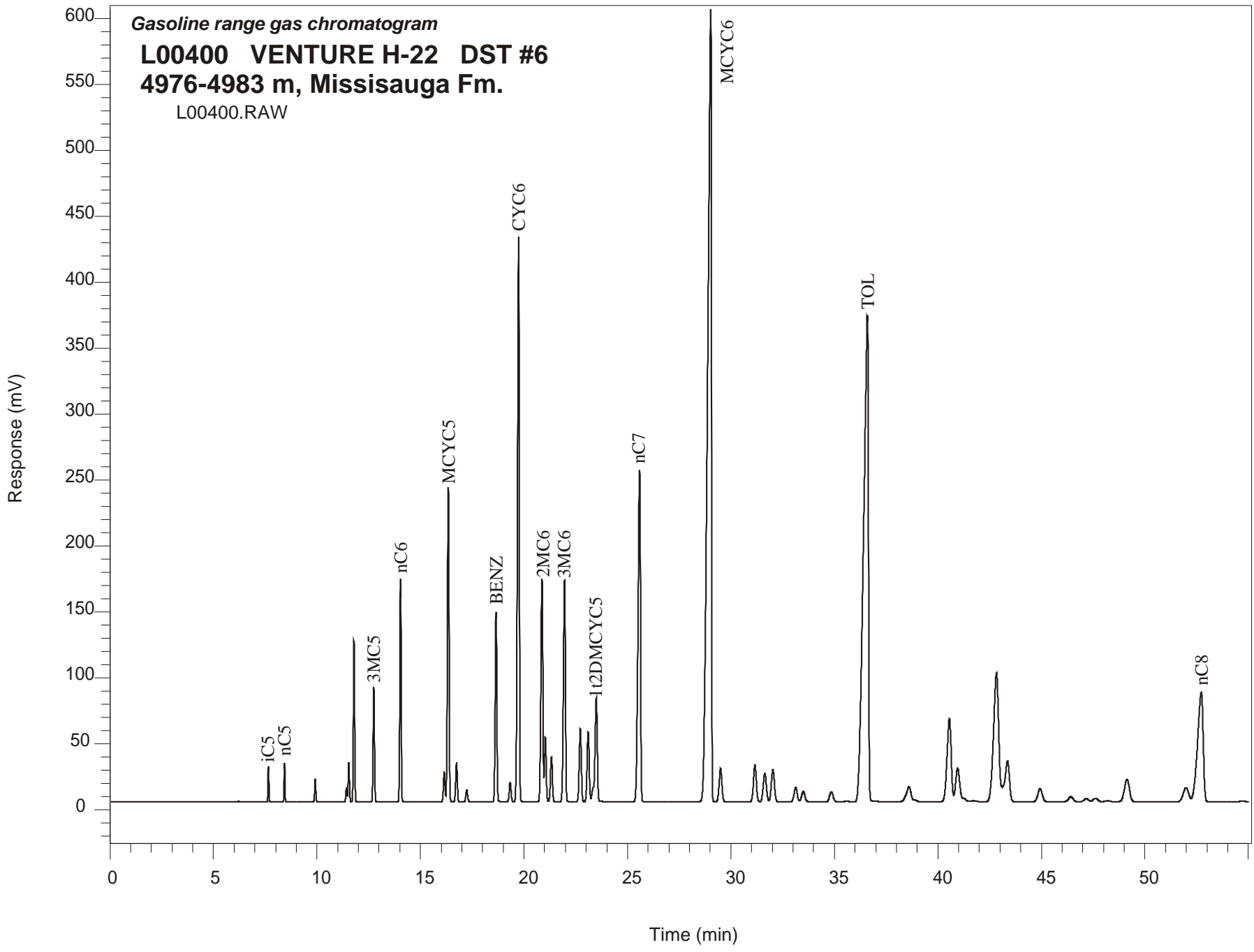


**Gasoline range gas chromatogram**  
**L00400 VENTURE H-22 DST #6**  
**4976-4983 m, Missisauga Fm.**  
L00400.RAW



**VENTURE H-22 GSC #L00400, DST#6**  
**Gasoline Range Gas Chromatogram Report**

RET TIME [min]	PEAK	AREA	HEIGHT [uV]
7.66	iC5	79199	27056
8.43	nC5	87632	29552
9.91	22DMC4	64355	17037
11.43	CYC5	44169	11227
11.54	23DMC4	125752	29541
11.79	2MC5	504717	121849
12.74	3MC5	387929	87222
14.04	nC6	761156	169236
16.15	22DMC5	126422	22866
16.34	MCYC5	1263033	238902
16.74	24DMC5	161000	29850
17.23	223TMC4	53706	9181
18.65	Benzene	795918	143983
19.33	33DMC5	95285	14855
19.74	CYC6	2703220	429407
20.87	2MC6	1088264	169381
21.03	23DMC5	287731	48707
21.32	11DMCYC5	219549	33653
21.96	3MC6	1126257	167872
22.72	1c3DMCYC5	382425	55682
23.10	1t3DMCYC5	371900	52808
23.49	1t2DMCYC5	646819	79002
25.59	nC7	2068858	251564
29.02	MCYC6	7791696	600735
29.50	22DMC6	237116	25329
31.16	ECYC5	272680	27879
31.64	25DMC6	225419	21581
32.03	24DMC6	253683	24417
33.13	223TMC5	122800	11223
35.59	234TMC5	7288	539
36.60	Toluene	6041879	366523
40.56	2MC7	885690	63063
43.36	3MC7	501340	31166
51.99	1c4DMCYC6	201411	10834
52.72	nC8	1583994	82808