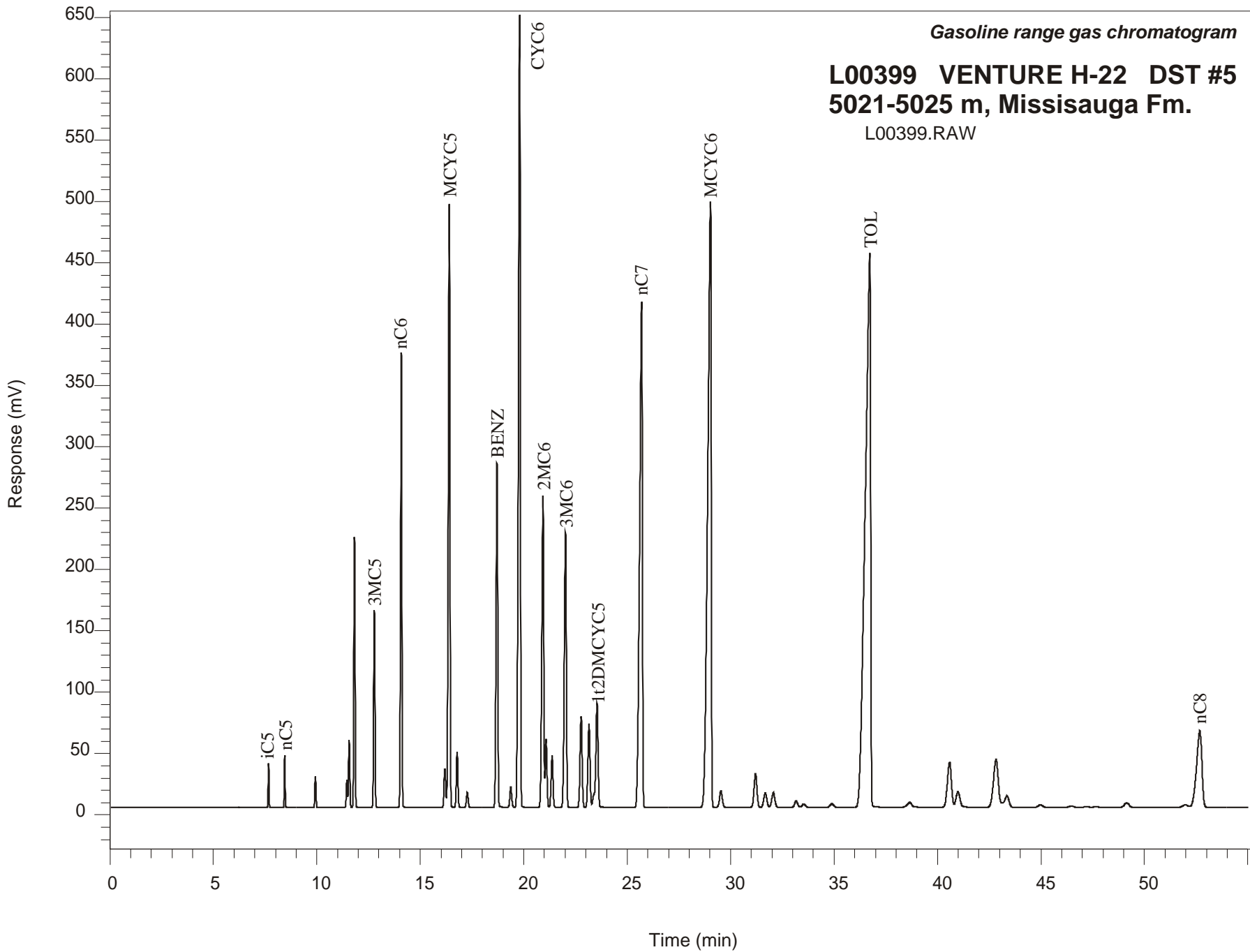


Gasoline range gas chromatogram

**L00399 VENTURE H-22 DST #5
5021-5025 m, Missisauga Fm.**

L00399.RAW



VENTURE H-22 GSC #L00399, DST#5
Gasoline Range Gas Chromatogram Report

RET TIME [min]	PEAK	AREA	HEIGHT [uV]
7.67	iC5	98256	36174
8.45	nC5	122575	42796
9.93	22DMC4	94950	25403
11.45	CYC5	88469	22765
11.56	23DMC4	229622	54899
11.82	2MC5	897784	220527
12.78	3MC5	704326	160629
14.08	nC6	1676167	370905
16.19	22DMC5	178028	31322
16.40	MCYC5	2642657	492666
16.78	24DMC5	240141	45338
17.27	223TMC4	71287	12245
18.71	Benzene	1566263	280844
19.37	33DMC5	107842	16534
19.80	CYC6	4278735	647595
20.93	2MC6	1653620	254089
21.08	23DMC5	314650	55619
21.37	11DMCYC5	270870	42067
22.02	3MC6	1521598	224287
22.77	1c3DMCYC5	510883	74342
23.15	1t3DMCYC5	475416	68028
23.54	1t2DMCYC5	681985	85138
25.69	nC7	3774007	412381
29.02	MCYC6	5886505	493920
29.54	22DMC6	127150	13442
31.21	ECYC5	270707	27564
31.68	25DMC6	121565	11898
32.07	24DMC6	126367	12219
33.17	223TMC5	57717	5282
35.64	234TMC5	2261	170
36.72	Toluene	8246233	452293
40.59	2MC7	503437	36901
43.37	3MC7	154633	9501
51.98	1c4DMCYC6	26020	1770
52.67	nC8	72362	5959