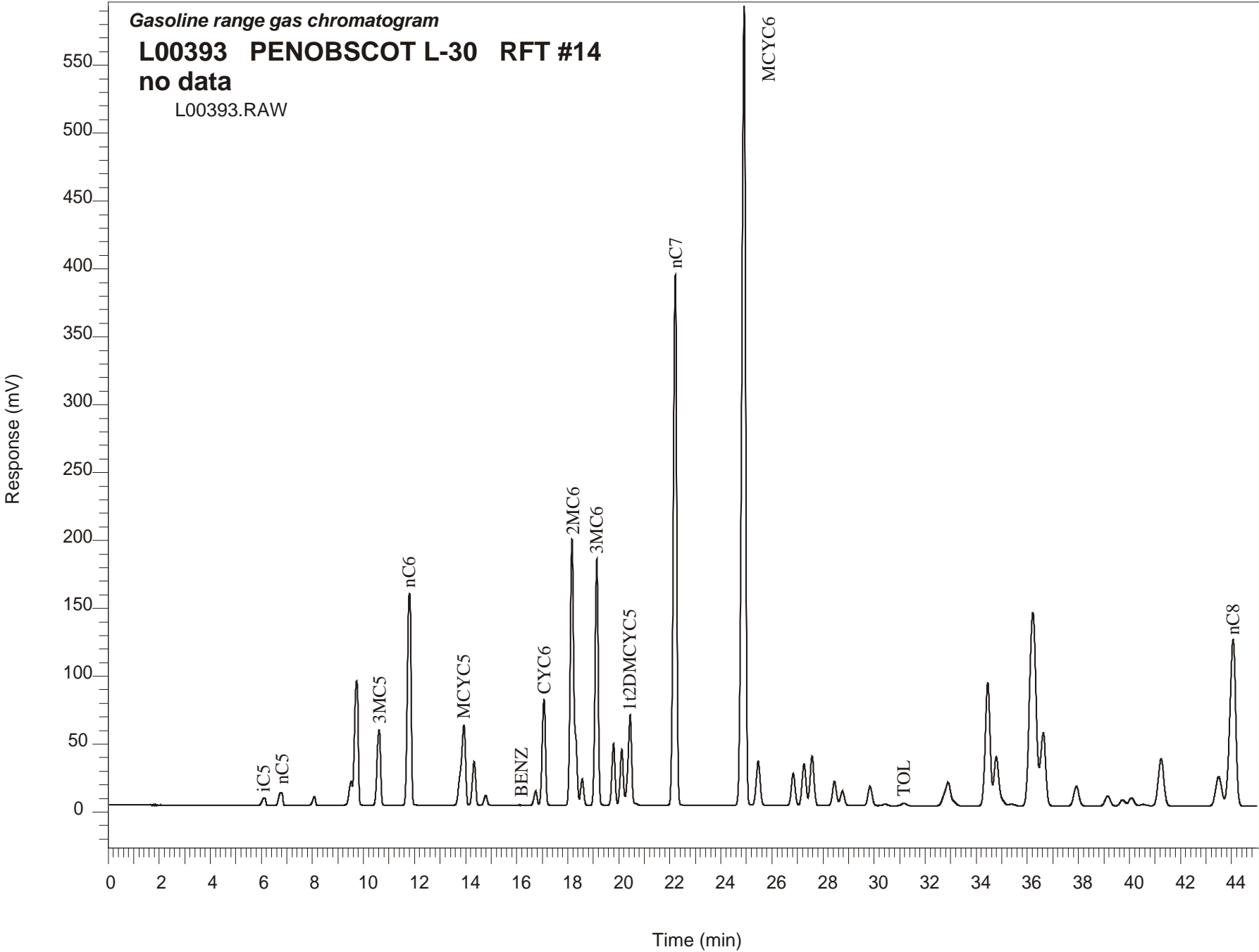


Gasoline range gas chromatogram  
**L00393 PENOBSCOT L-30 RFT #14**  
no data  
L00393.RAW



## PENOBSCOT L-30 GSC #L00393, RFT#14 Gasoline Range Gas Chromatogram Report

RET TIME [min]	PEAK	AREA	HEIGHT [uV]
4.58	23DMC5	188	36
6.12	iC5	51203	5467
6.76	nC5	98025	9384
8.08	22DMC4	47422	6350
9.52	23DMC4	150827	17687
9.73	2MC5	912966	91665
10.61	3MC5	534048	55373
11.80	nC6	1594115	156466
13.93	MCYC5	731586	59021
14.33	24DMC5	279506	31944
14.79	223TMC4	61647	7253
16.74	33DMC5	90282	10485
17.07	CYC6	697309	78130
18.17	2MC6	2133626	195966
18.31	23DMC5	Peak co-elutes with 2MC6	
18.57	11DMCYC5	164574	19376
19.14	3MC6	1575529	180977
19.79	1c3DMCYC5	393642	45625
20.12	1t3DMCYC5	361270	41274
20.44	1t2DMCYC5	657006	66466
22.21	nC7	3605750	390826
24.91	MCYC6	6093927	588616
25.46	22DMC6	352471	32710
26.84	ECYC5	244059	23651
27.26	25DMC6	324789	30880
27.57	24DMC6	385720	36458
28.45	223TMC5	197770	18065
30.42	234TMC5	15810	1320
31.18	Toluene	26116	1894
34.45	2MC7	1203556	91068
36.63	3MC7	756954	53893
43.49	1c4DMCYC6	360890	21673
44.06	nC8	1972321	122945