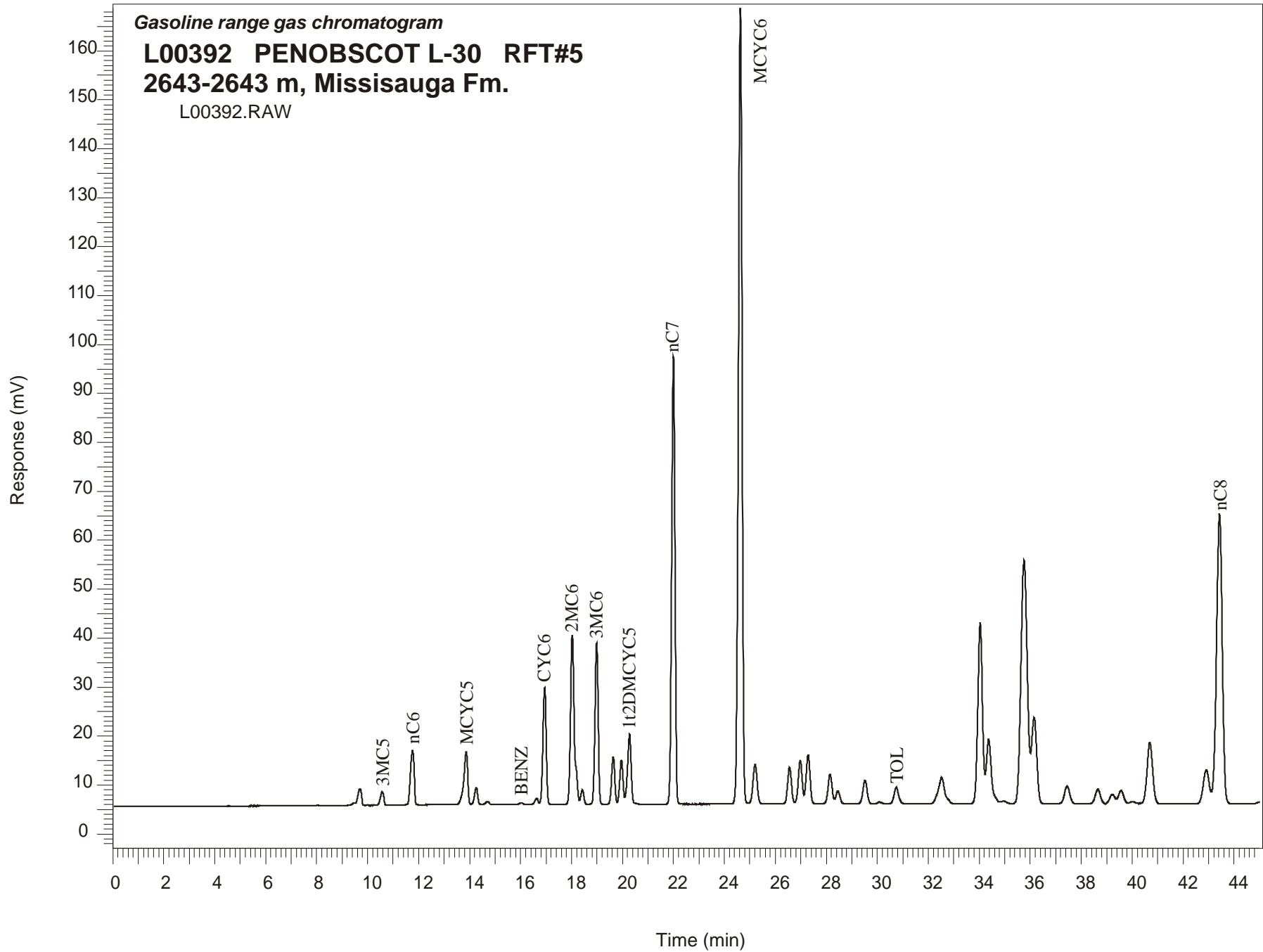


Gasoline range gas chromatogram

**L00392 PENOBSCOT L-30 RFT#5**  
**2643-2643 m, Missisauga Fm.**

L00392.RAW



**PENOBSCOT L-30 GSC #L00392, RFT#5**  
**Gasoline Range Gas Chromatogram Report**

RET TIME [min]	PEAK	AREA	HEIGHT [uV]
9.49	23DMC4	4348	506
9.70	2MC5	33217	3342
10.58	3MC5	26104	2699
11.76	nC6	112204	11051
13.87	MCYC5	117270	10695
14.26	24DMC5	29683	3380
14.71	223TMC4	4960	586
16.03	Benzene	2982	316
16.63	33DMC5	10806	1219
16.95	CYC6	213025	23883
18.03	2MC6	358487	34640
18.17	23DMC5	Peak co-elutes with 2MC6	
18.42	11DMCYC5	24637	2903
18.98	3MC6	282490	32930
19.64	1c3DMCYC5	82529	9591
19.96	1t3DMCYC5	77677	8956
20.28	1t2DMCYC5	134844	14120
22.00	nC7	814585	91324
24.63	MCYC6	1611108	162552
25.21	22DMC6	91120	8072
26.56	ECYC5	77065	7495
26.98	25DMC6	93455	8888
27.29	24DMC6	106069	9996
28.15	223TMC5	67045	6020
30.10	234TMC5	4226	359
30.74	Toluene	41421	3333
34.04	2MC7	465933	36942
36.15	3MC7	247652	17590
42.90	1c4DMCYC6	113342	6928
43.42	nC8	925172	59252