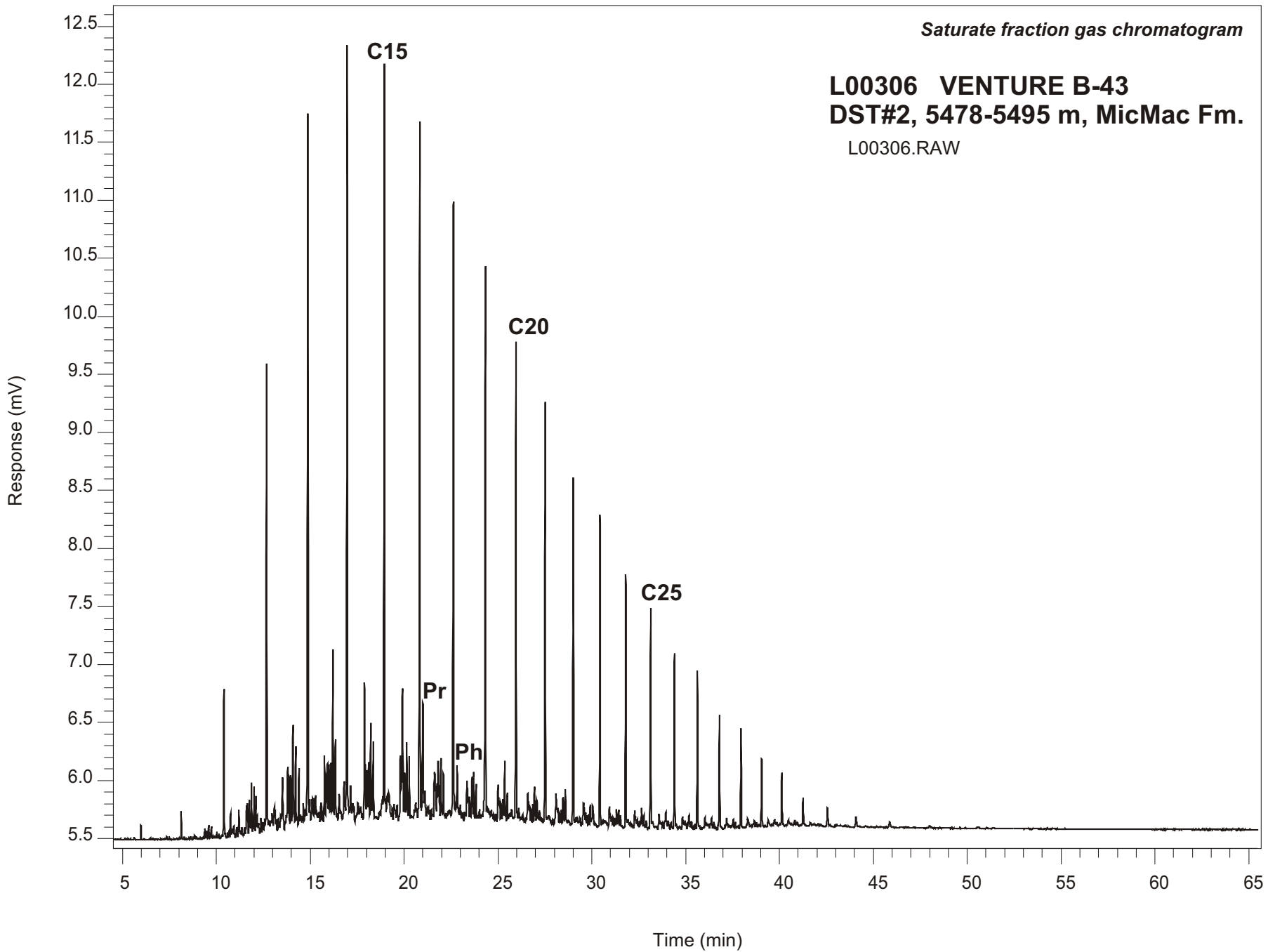


*Saturate fraction gas chromatogram*

**L00306 VENTURE B-43**  
**DST#2, 5478-5495 m, MicMac Fm.**  
L00306.RAW



**VENTURE B-13**  
**GSC #L00306, DST#2**  
**Saturate Fraction Gas Chromatogram Report**

<b>RET TIME [min]</b>	<b>PEAK</b>	<b>AREA</b>	<b>HEIGHT [uV]</b>
10.41	C12	2656	1262
12.68	C13	8270	3887
14.87	C14	14857	6140
16.97	C15	17508	6590
18.95	C16	16933	6541
20.83	C17	16513	6042
21.00	Pr	3729	1013
22.63	C18	13907	5423
22.83	Ph	1108	368
24.33	C19	12525	4730
25.96	C20	10014	4118
27.52	C21	8891	3648
29.01	C22	7555	3013
30.43	C23	6498	2653
31.81	C24	5335	2175
33.13	C25	4612	1874
34.40	C26	3837	1519
35.62	C27	3198	1349
36.80	C28	2525	990
37.95	C29	2160	835
38.30	C30	108	40
39.41	C31	142	40