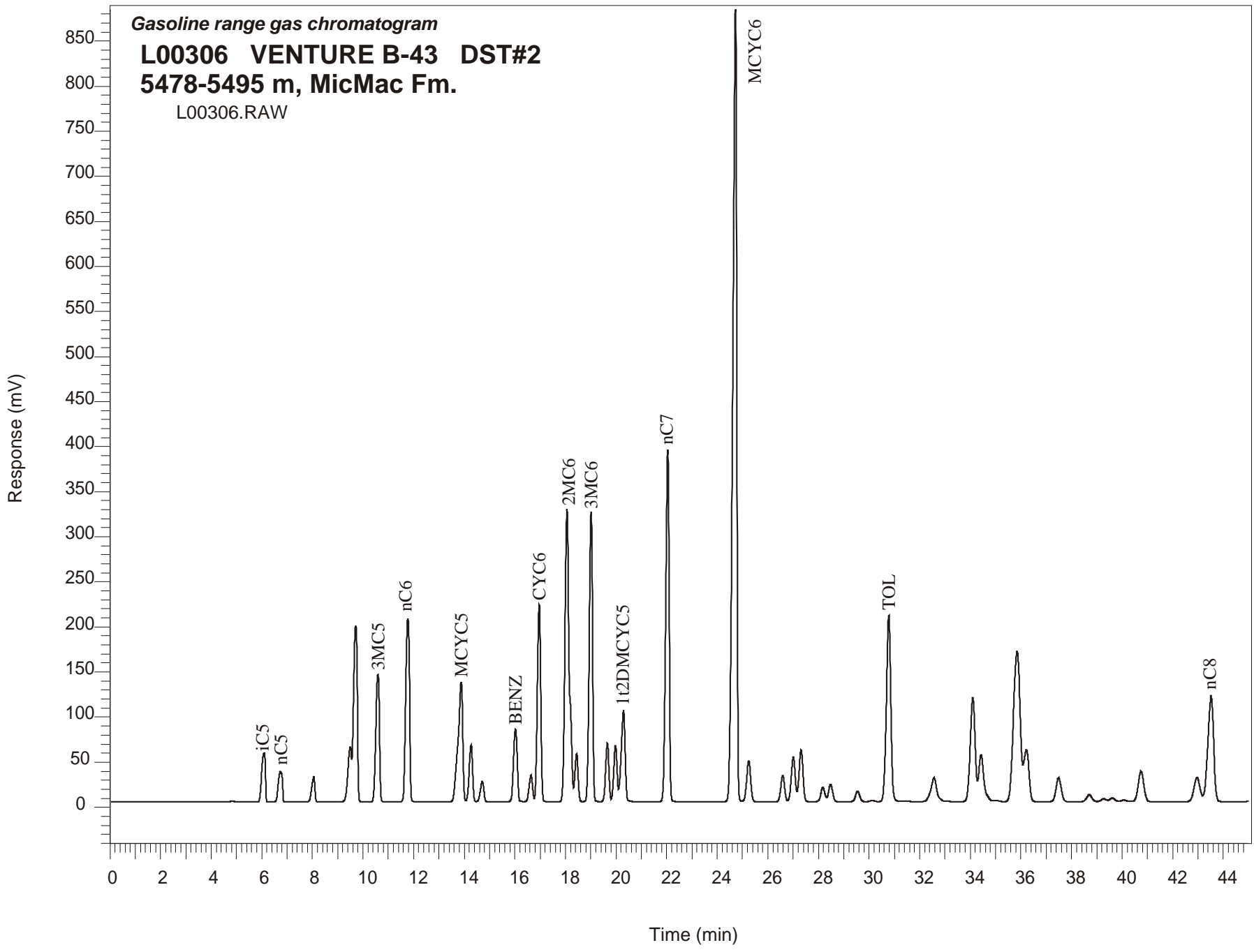


Gasoline range gas chromatogram
L00306 VENTURE B-43 DST#2
5478-5495 m, MicMac Fm.
L00306.RAW



VENTURE B-43 GSC #L00306, DST#2 Gasoline Range Gas Chromatogram Report

RET TIME [min]	PEAK	AREA	HEIGHT [uV]
6.09	iC5	545009	54352
6.73	nC5	372339	33840
8.05	22DMC4	237966	27661
9.50	23DMC4	600145	60899
9.71	2MC5	2012106	195630
10.59	3MC5	1423208	141491
11.77	nC6	2134062	203051
13.88	MCYC5	1735355	133160
14.27	24DMC5	590441	62999
14.71	223TMC4	213665	22478
16.03	Benzene	811549	80571
16.64	33DMC5	273559	29388
16.96	CYC6	2022144	218914
18.06	2MC6	3838994	324257
18.20	23DMC5	Peak co-elutes with 2MC6	
18.44	11DMCYC5	470132	53281
19.01	3MC6	2887408	321288
19.65	1c3DMCYC5	571864	64639
19.98	1t3DMCYC5	560423	62054
20.29	1t2DMCYC5	1081044	101389
22.04	nC7	3666184	389837
24.72	MCYC6	9649938	878979
25.25	22DMC6	495761	45227
26.59	ECYC5	299095	28776
27.01	25DMC6	538081	49764
27.32	24DMC6	615991	57393
28.18	223TMC5	175672	15727
30.13	234TMC5	16886	1406
30.79	Toluene	2547586	206692
34.10	2MC7	1568242	115361
36.22	3MC7	809448	57722
42.95	1c4DMCYC6	446423	26988
43.51	nC8	1872611	117464