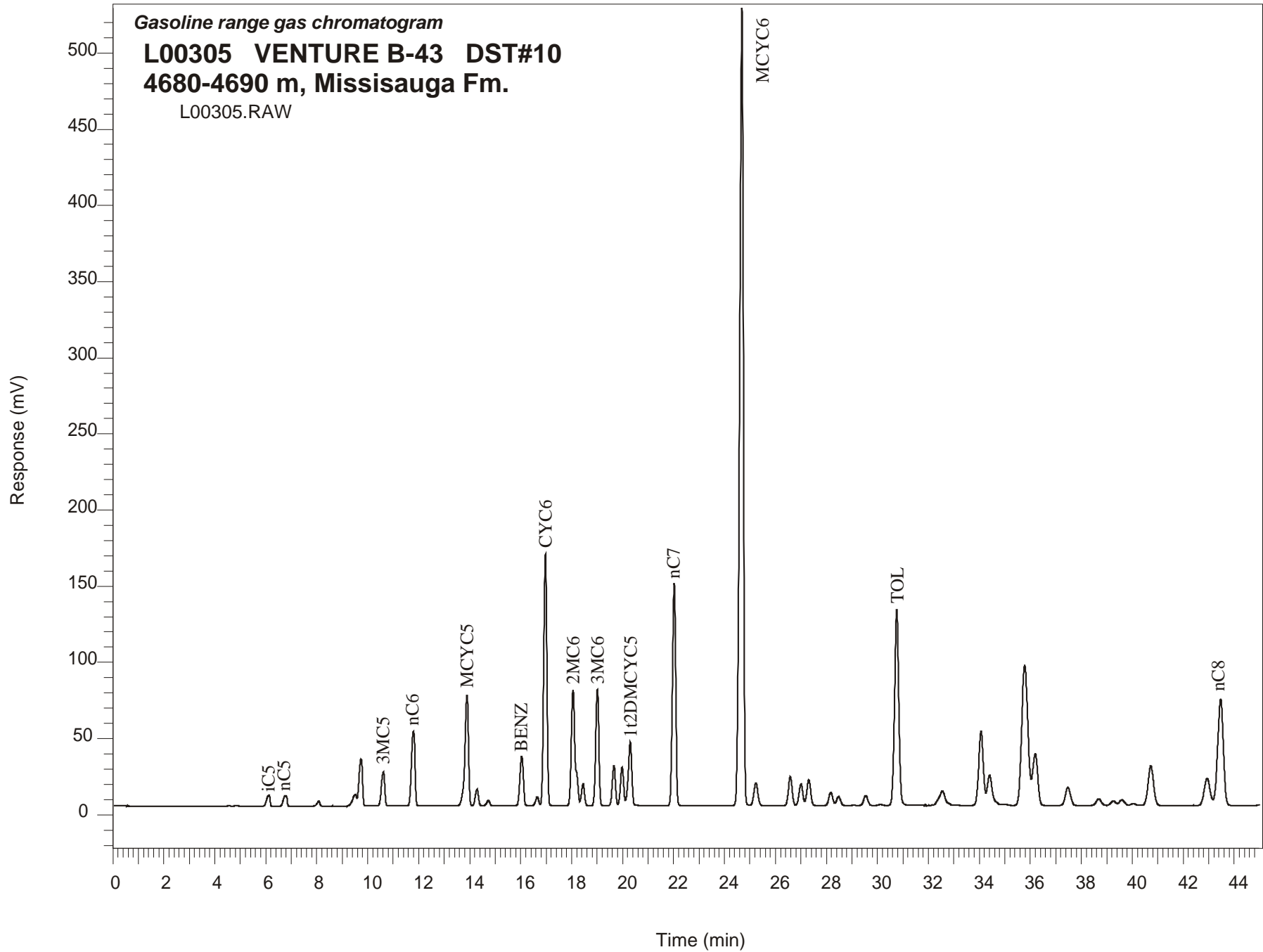


Gasoline range gas chromatogram

L00305 VENTURE B-43 DST#10
4680-4690 m, Missisauga Fm.

L00305.RAW



VENTURE B-43 GSC #L00305, DST#10
Gasoline Range Gas Chromatogram Report

RET TIME [min]	PEAK	AREA	HEIGHT [uV]
6.12	iC5	65355	7280
6.77	nC5	68268	6790
8.08	22DMC4	23827	3212
9.51	23DMC4	84437	7679
9.74	2MC5	289863	30801
10.61	3MC5	205375	22208
11.79	nC6	477104	48983
13.90	MCYC5	723242	72336
14.29	24DMC5	93503	10793
14.73	223TMC4	29057	3387
16.04	Benzene	303392	32442
16.65	33DMC5	48308	5768
16.97	CYC6	1419890	165329
18.05	2MC6	813108	75970
18.19	23DMC5	Peak co-elutes with 2MC6	
18.45	11DMCYC5	120887	14350
19.01	3MC6	645273	76312
19.66	1c3DMCYC5	220620	26215
19.98	1t3DMCYC5	213197	25152
20.30	1t2DMCYC5	385799	41692
22.02	nC7	1300609	145899
24.68	MCYC6	5231314	522907
25.23	22DMC6	161658	14872
26.58	ECYC5	190441	18938
27.00	25DMC6	146780	14204
27.31	24DMC6	175485	16763
28.17	223TMC5	92370	8568
30.13	234TMC5	6501	590
30.76	Toluene	1505667	128814
34.07	2MC7	613214	48432
36.19	3MC7	475545	34159
42.94	1c4DMCYC6	286969	17891
43.47	nC8	1083715	69975