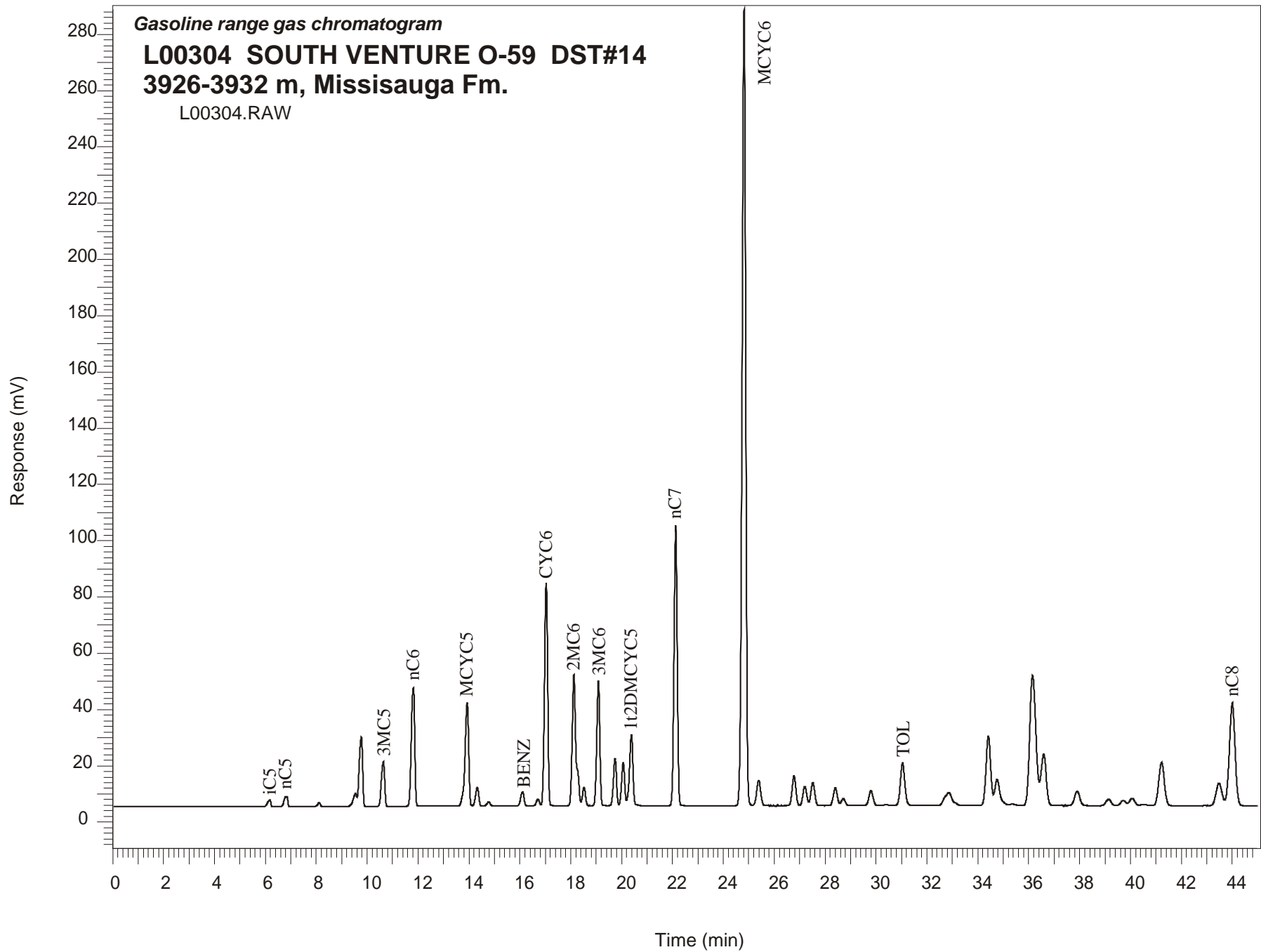


Gasoline range gas chromatogram

**L00304 SOUTH VENTURE O-59 DST#14**  
**3926-3932 m, Missisauga Fm.**

L00304.RAW



## SOUTH VENTURE O-59 GSC #L00304, DST#14

### Gasoline Range Gas Chromatogram Report

RET TIME [min]	PEAK	AREA	HEIGHT [uV]
6.17	iC5	20006	2282
6.82	nC5	35760	3598
8.12	CYC5	9943	1360
9.55	23DMC4	45656	4679
9.77	2MC5	229219	24698
10.64	3MC5	144014	15924
11.81	nC6	400594	41988
13.93	MCYC5	367173	36707
14.33	24DMC5	57374	6670
14.78	223TMC4	12449	1488
16.10	Benzene	46051	4992
16.71	23DMC5	19631	2368
17.04	CYC6	677369	79135
18.12	2MC6	490474	46694
18.26	23DMC5	Peak co-elutes with 2MC6	
18.52	11DMCYC5	55273	6603
19.09	3MC6	370807	44299
19.74	1c3DMCYC5	138945	16690
20.06	1t3DMCYC5	127896	15205
20.38	1t2DMCYC5	229628	24979
22.12	nC7	881742	99502
24.82	MCYC6	2828402	283050
25.39	22DMC6	98617	8890
26.78	ECYC5	109867	10679
27.20	25DMC6	71777	6799
27.52	24DMC6	86839	8099
28.40	223TMC5	60260	5925
30.39	234TMC5	3948	353
31.05	Toluene	182493	15250
34.42	2MC7	314205	24592
36.59	3MC7	264164	18408
43.47	1c4DMCYC6	129877	7921
44.00	nC8	574395	36595