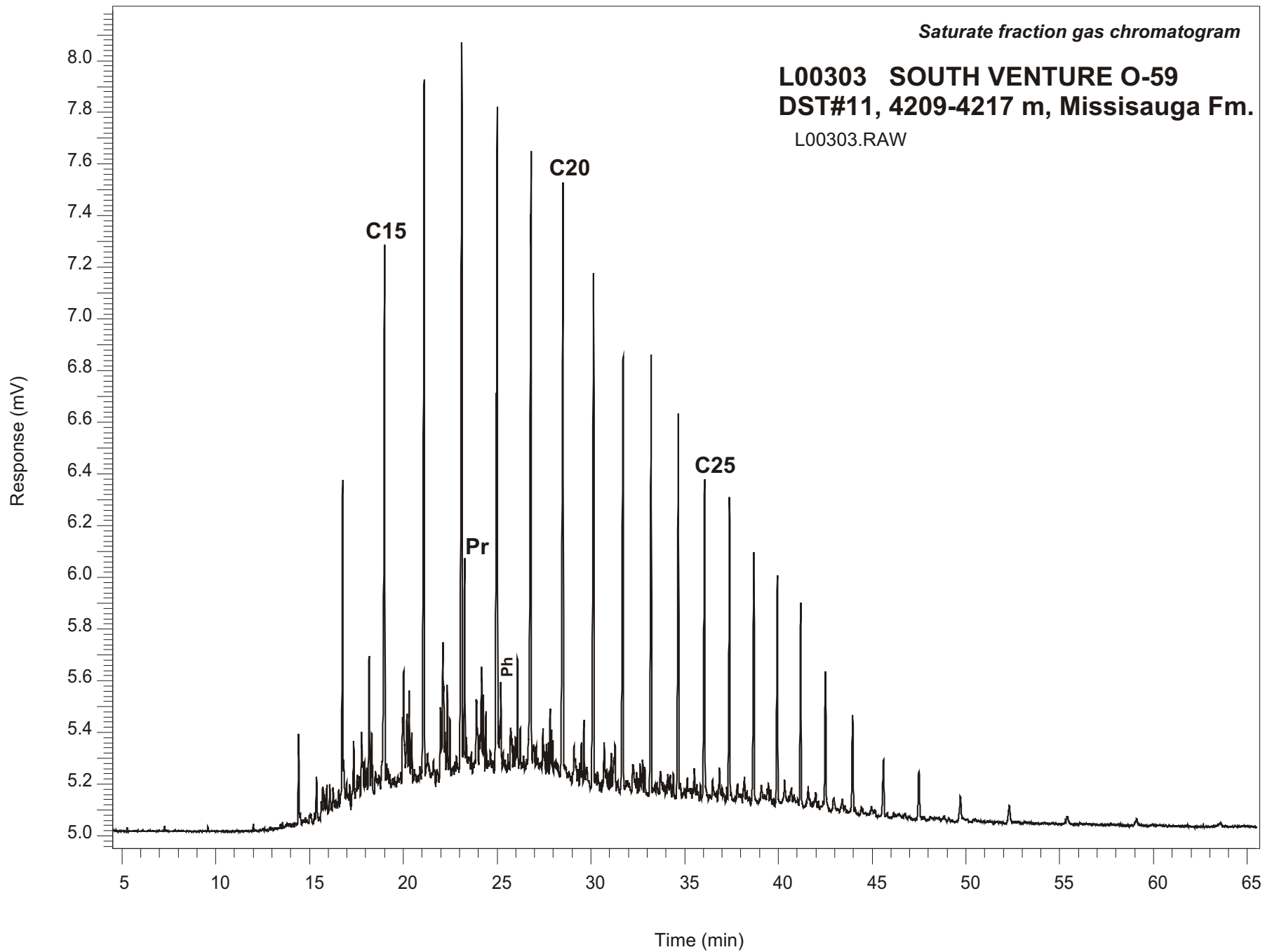


Saturate fraction gas chromatogram

**L00303 SOUTH VENTURE O-59
DST#11, 4209-4217 m, Missisauga Fm.**

L00303.RAW



SOUTH VENTURE O-59
GSC #L00303, DST#11
Saturate Fraction Gas Chromatogram Report

RET TIME [min]	PEAK	AREA	HEIGHT [uV]
14.42	C13	973	349
16.77	C14	3921	1280
19.00	C15	8111	2093
21.11	C16	10393	2727
23.12	C17	11833	2890
23.28	Pr	2619	803
25.00	C18	10719	2491
25.20	Ph	982	296
26.81	C19	10355	2366
28.51	C20	8615	2259
30.15	C21	7901	2003
31.71	C22	6852	1703
33.21	C23	6109	1689
34.66	C24	5143	1469
36.06	C25	4603	1222
37.40	C26	4129	1166
38.69	C27	3822	972
39.95	C28	3103	881
41.19	C29	2832	780
42.51	C30	1705	500
43.96	C31	1603	371
45.60	C32	1095	219