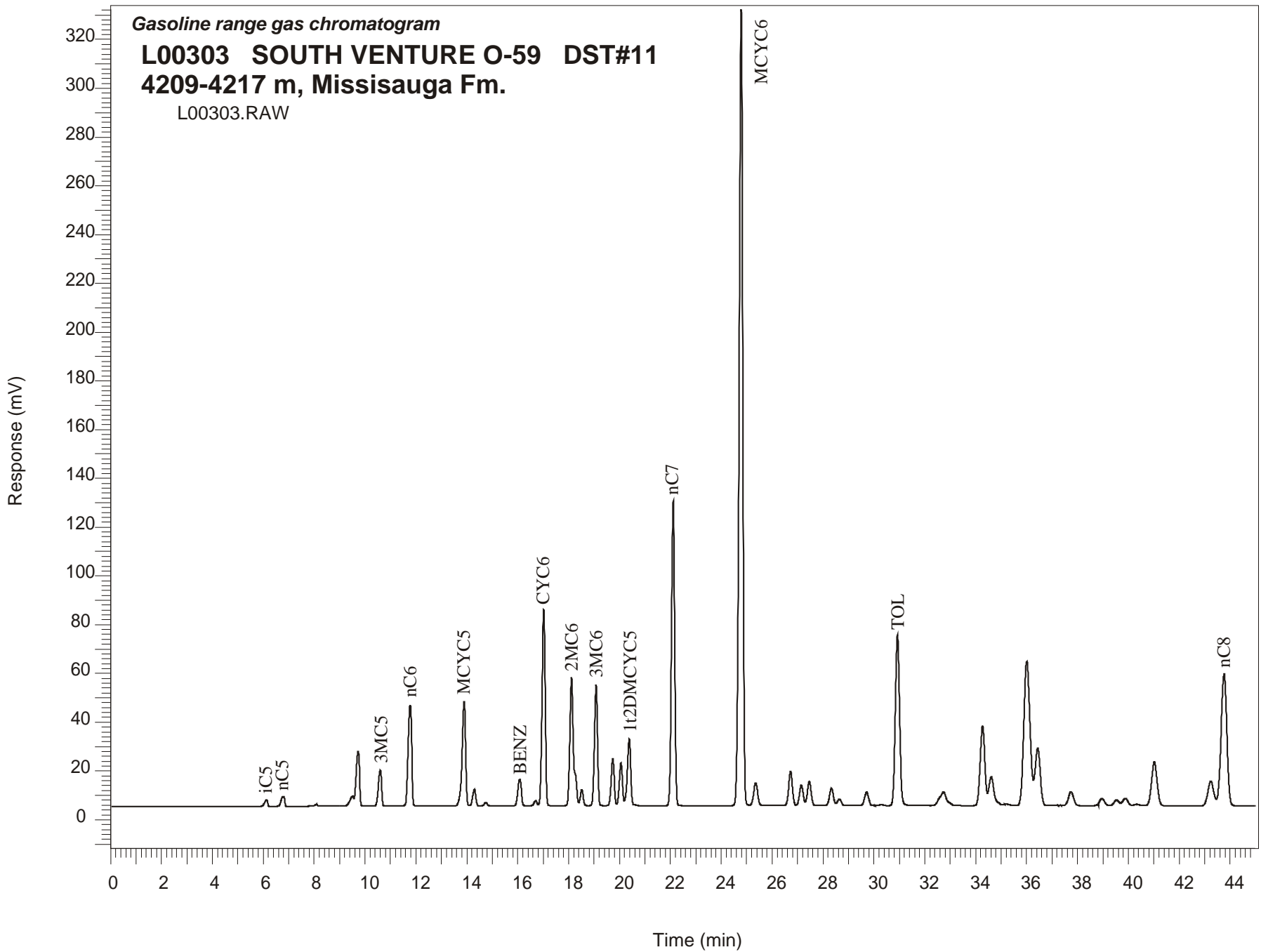


**Gasoline range gas chromatogram**  
**L00303 SOUTH VENTURE O-59 DST#11**  
**4209-4217 m, Missisauga Fm.**  
L00303.RAW



## SOUTH VENTURE O-59 GSC #L00303, DST#11

### Gasoline Range Gas Chromatogram Report

RET TIME [min]	PEAK	AREA	HEIGHT [uV]
6.14	iC5	21618	2621
6.79	nC5	38796	3967
8.09	22DMC4	5391	814
9.51	23DMC4	44406	4241
9.73	2MC5	206434	22481
10.60	3MC5	132024	14768
11.77	nC6	406384	41533
13.89	MCYC5	415374	42707
14.30	24DMC5	57140	6828
14.75	223TMC4	10749	1329
16.08	Benzene	104038	10939
16.70	33DMC5	16740	2065
17.02	CYC6	685772	80487
18.11	2MC6	544723	52678
18.25	23DMC5	Peak co-elutes with 2MC6	
18.52	11DMCYC5	53855	6569
19.08	3MC6	416261	49610
19.73	1c3DMCYC5	159836	19103
20.06	1t3DMCYC5	147223	17489
20.38	1t2DMCYC5	245416	27074
22.11	nC7	1113379	125143
24.79	MCYC6	3240783	326666
25.36	22DMC6	100969	9250
26.73	ECYC5	143853	14104
27.15	25DMC6	86928	8440
27.46	24DMC6	103385	9910
28.33	223TMC5	76464	7081
30.30	234TMC5	4183	373
30.93	Toluene	807440	70063
34.27	2MC7	417577	32734
36.43	3MC7	334388	23495
43.25	1c4DMCYC6	161516	10017
43.76	nC8	854265	54112