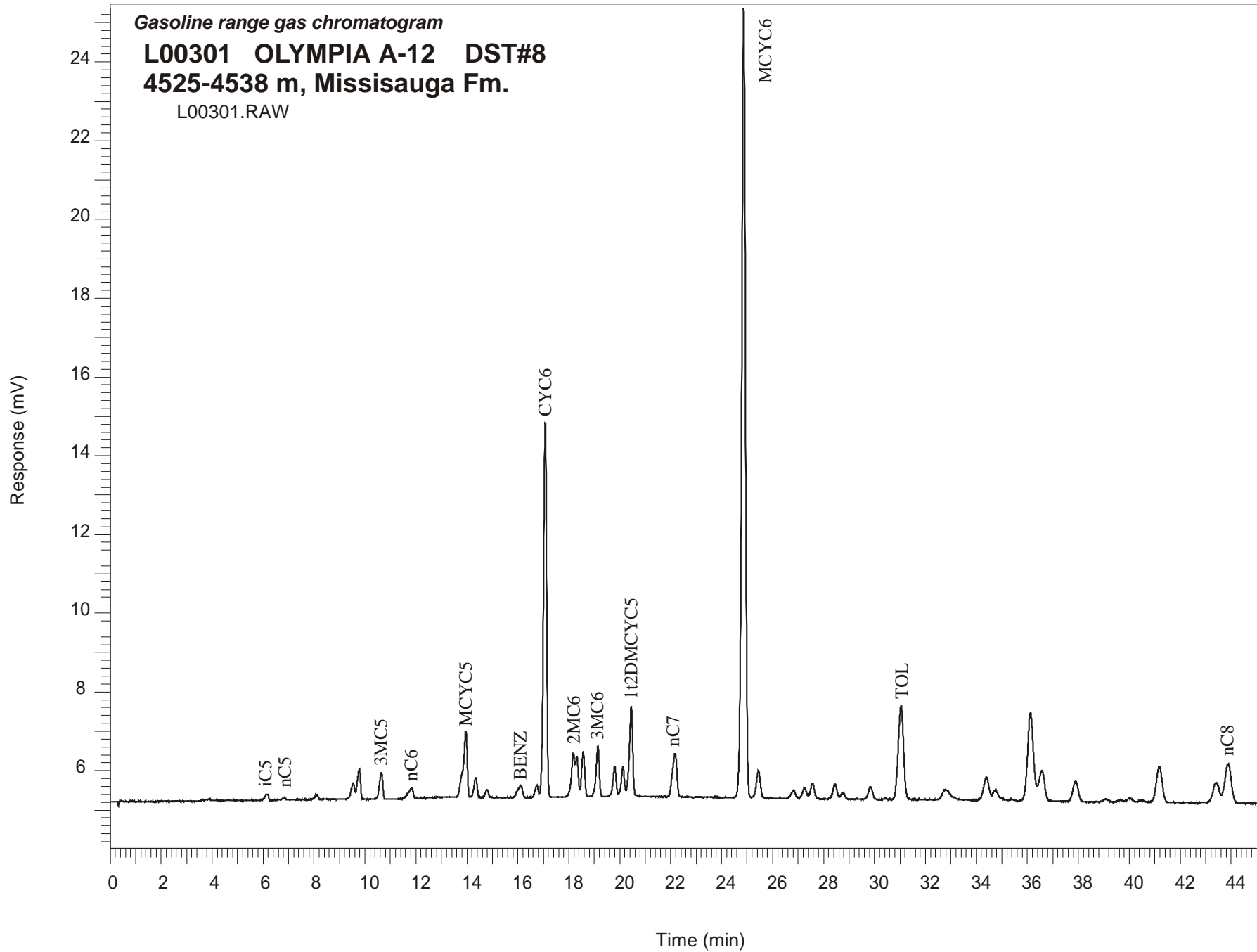


Gasoline range gas chromatogram

L00301 OLYMPIA A-12 DST#8
4525-4538 m, Missisauga Fm.

L00301.RAW



OLYMPIA A-12 GSC #L00301, DST#8 Gasoline Range Gas Chromatogram Report

RET TIME [min]	PEAK	AREA	HEIGHT [uV]
6.16	iC5	1228	145
8.11	22DMC4	1072	133
9.55	23DMC4	3654	393
9.78	2MC5	6562	746
10.65	3MC5	5938	665
11.84	nC6	3477	269
13.96	MCYC5	18689	1687
14.34	24DMC5	4275	502
14.78	223TMC4	1754	197
16.11	Benzene	359	17
16.74	33DMC5	2536	300
17.07	CYC6	81613	9491
18.18	2MC6	10049	1107
18.31	23DMC5	7613	1019
18.57	11DMCYC5	9583	1137
19.14	3MC6	11155	1274
19.80	1c3DMCYC5	6511	765
20.12	1t3DMCYC5	6281	738
20.45	1t2DMCYC5	20713	2261
22.17	nC7	13547	1094
24.87	MCYC6	202754	20033
25.45	22DMC6	7396	683
26.83	ECYC5	2232	192
27.26	25DMC6	2566	250
27.57	24DMC6	3700	363
28.45	223TMC5	3480	342
30.45	234TMC5	167	23
31.04	Toluene	34425	2370
34.39	2MC7	8226	560
36.57	3MC7	11580	768
43.42	1c4DMCYC6	900	49
43.89	nC8	13969	878