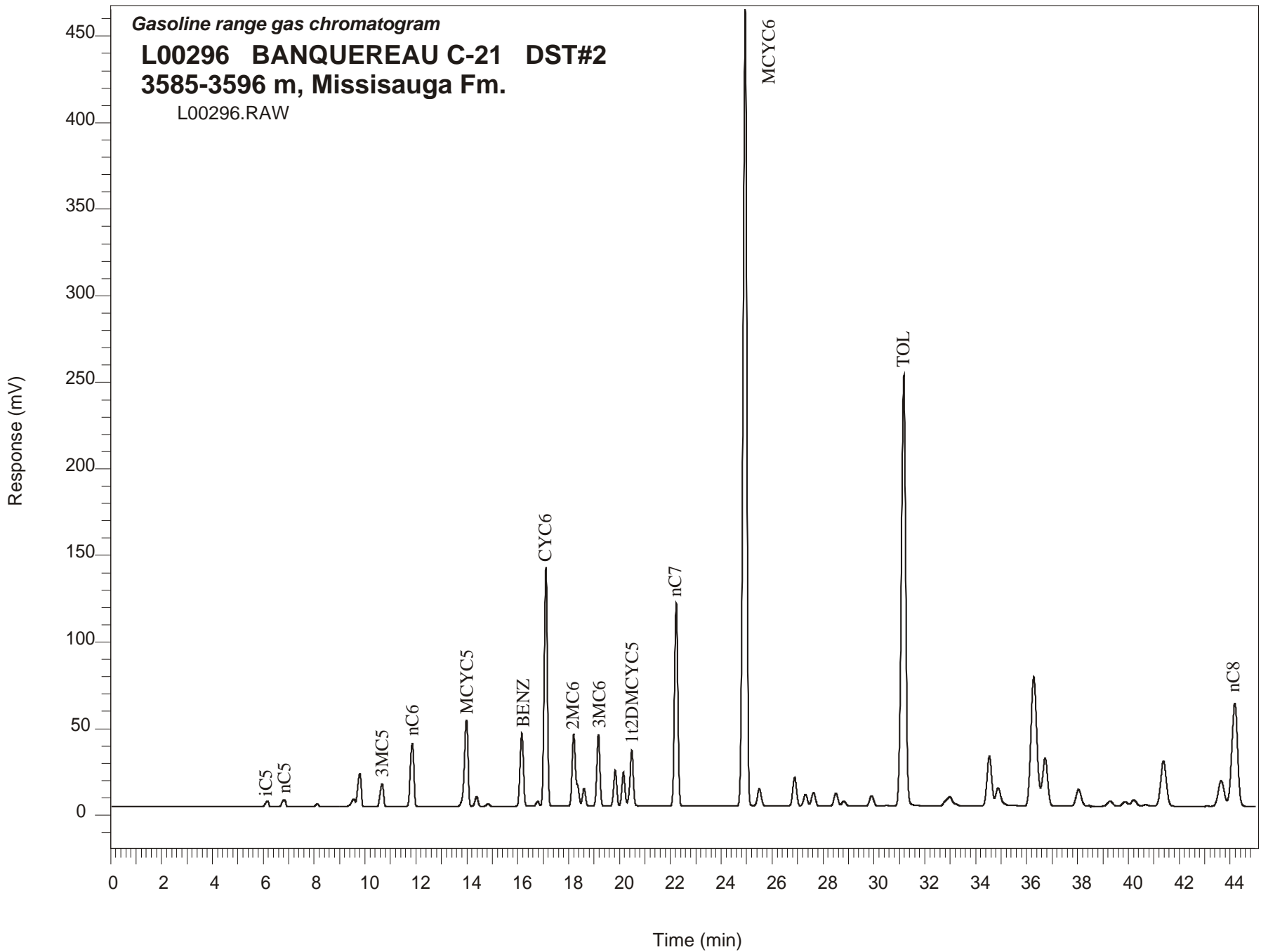


Gasoline range gas chromatogram  
**L00296 BANQUEREAU C-21 DST#2**  
**3585-3596 m, Missisauga Fm.**  
L00296.RAW



## BANQUEREAU C-21 GSC #L00296, DST#2 Gasoline Range Gas Chromatogram Report

RET TIME [min]	PEAK	AREA	HEIGHT [uV]
6.17	iC5	27047	2992
6.82	nC5	39248	3886
8.13	22DMC4	12155	1646
9.57	23DMC4	47885	4310
9.79	2MC5	181114	19033
10.67	3MC5	122514	13211
11.85	nC6	359497	36593
13.99	MCYC5	493305	50214
14.39	24DMC5	47704	5562
14.84	223TMC4	13595	1634
16.16	Benzene	395562	42314
16.78	33DMC5	22810	2778
17.11	CYC6	1203044	138247
18.20	2MC6	450939	41791
18.34	23DMC5	Peak co-elutes with 2MC6	
18.61	11DMCYC5	84968	10111
19.17	3MC6	351359	41559
19.83	1c3DMCYC5	175985	20700
20.16	1t3DMCYC5	167044	19504
20.48	1t2DMCYC5	298342	32371
22.23	nC7	1059115	117521
24.95	MCYC6	4657313	460121
25.50	22DMC6	108331	9949
26.89	ECYC5	172474	16793
27.31	25DMC6	70923	6747
27.63	24DMC6	84997	7969
28.51	223TMC5	83748	7581
30.51	234TMC5	5057	435
31.18	Toluene	2937021	249093
34.54	2MC7	370890	28796
36.73	3MC7	397529	27848
43.65	1c4DMCYC6	245411	14938
44.18	nC8	946909	59421