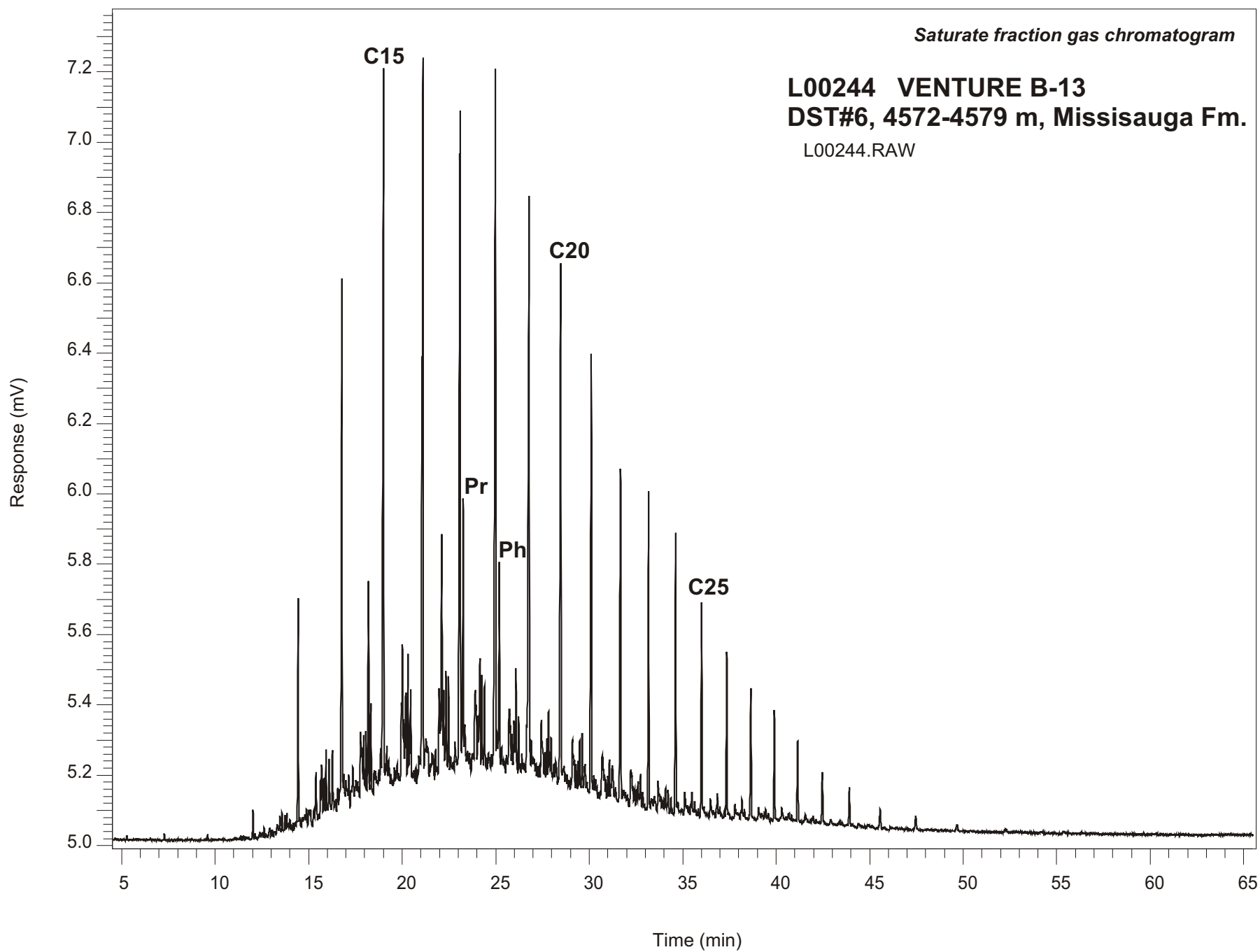


Saturate fraction gas chromatogram

**L00244 VENTURE B-13
DST#6, 4572-4579 m, Missisauga Fm.**

L00244.RAW



VENTURE B-13
GSC #L00244, DST#6
Saturate Fraction Gas Chromatogram Report

RET TIME [min]	PEAK	AREA	HEIGHT [uV]
12.02	C12	206	81
14.44	C13	1555	641
16.78	C14	4336	1504
19.00	C15	7074	2023
21.11	C16	8110	2012
23.10	C17	7973	1807
23.26	Pr	2375	732
24.98	C18	7832	1983
25.19	Ph	1745	578
26.78	C19	7216	1624
28.47	C20	5373	1466
30.11	C21	4303	1240
31.67	C22	3438	932
33.18	C23	2734	897
34.62	C24	2164	784
36.01	C25	1736	600
37.36	C26	1448	469
38.65	C27	1197	373
39.90	C28	960	311
41.15	C29	773	229
42.46	C30	481	141
43.91	C31	384	108
45.56	C32	236	55