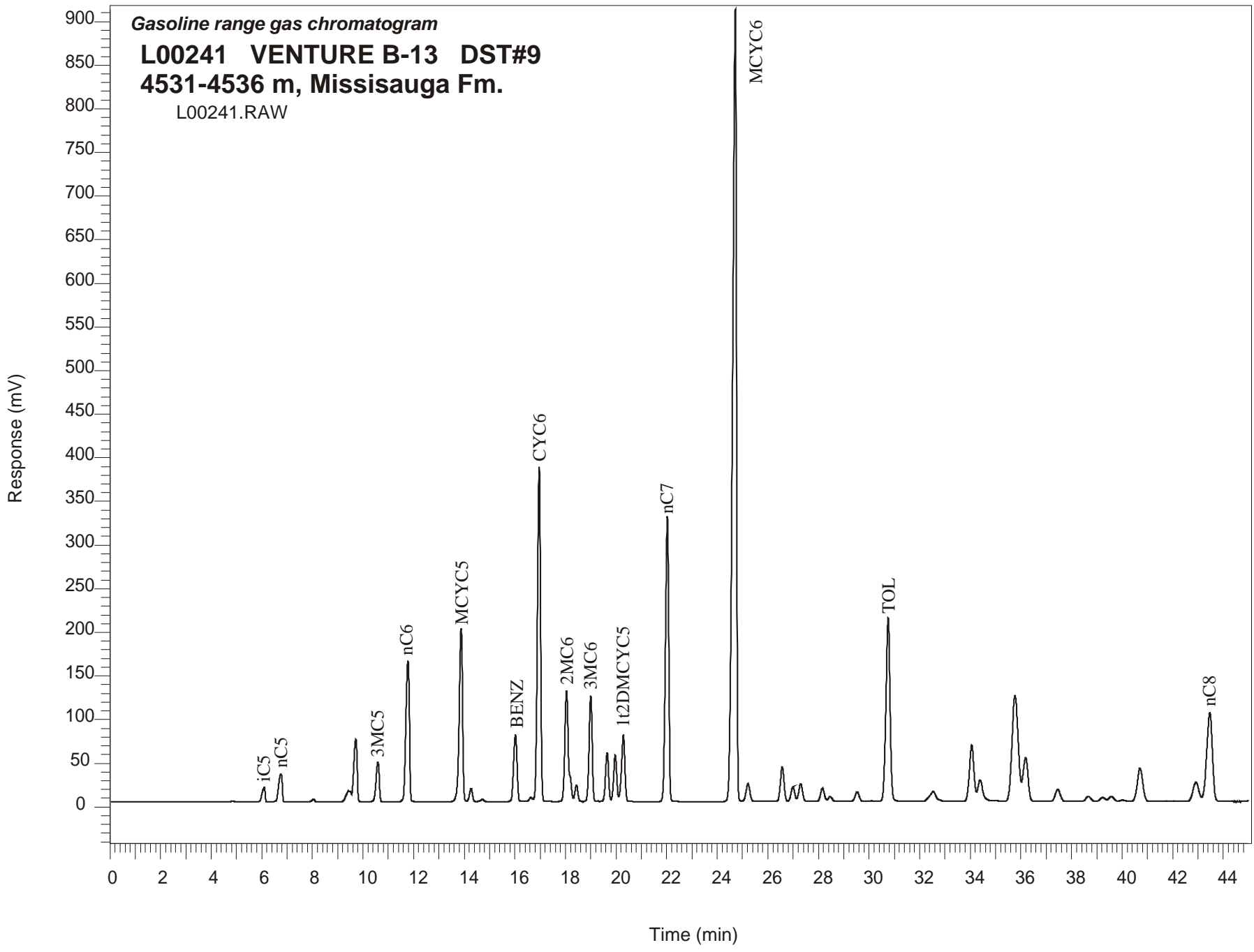


Gasoline range gas chromatogram
L00241 VENTURE B-13 DST#9
4531-4536 m, Missisauga Fm.
L00241.RAW



VENTURE B-13 GSC #L00241, DST#9
Gasoline Range Gas Chromatogram Report

RET TIME [min]	PEAK	AREA	HEIGHT [uV]
6.10	iC5	140424	16475
6.75	nC5	312921	31949
8.05	22DMC4	22025	3024
9.43	CYC5	113438	12511
9.49	23DMC4	57350	12159
9.72	2MC5	651204	71957
10.59	3MC5	405370	45422
11.78	nC6	1553282	161209
13.88	MCYC5	1843651	198650
14.27	24DMC5	126460	15081
14.72	223TMC4	23498	2722
16.02	Benzene	713487	76505
16.64	33DMC5	42635	4972
16.96	CYC6	3283396	383654
18.04	2MC6	1282380	126496
18.16	23DMC5	Peak co-elutes with 2MC6	
18.43	11DMCYC5	155312	18743
19.00	3MC6	1012658	121178
19.65	1c3DMCYC5	467777	55993
19.97	1t3DMCYC5	447581	52977
20.29	1t2DMCYC5	693006	76611
22.02	nC7	2931655	327015
24.71	MCYC6	9615938	909004
25.22	22DMC6	219229	20515
26.57	ECYC5	393522	39472
26.99	25DMC6	173232	16891
27.30	24DMC6	210620	20271
28.16	223TMC5	164184	15110
30.11	234TMC5	623	90
30.76	Toluene	2419047	210365
34.06	2MC7	819367	64643
36.19	3MC7	695300	50505
42.92	1c4DMCYC6	272478	18846
43.47	nC8	1486655	99424