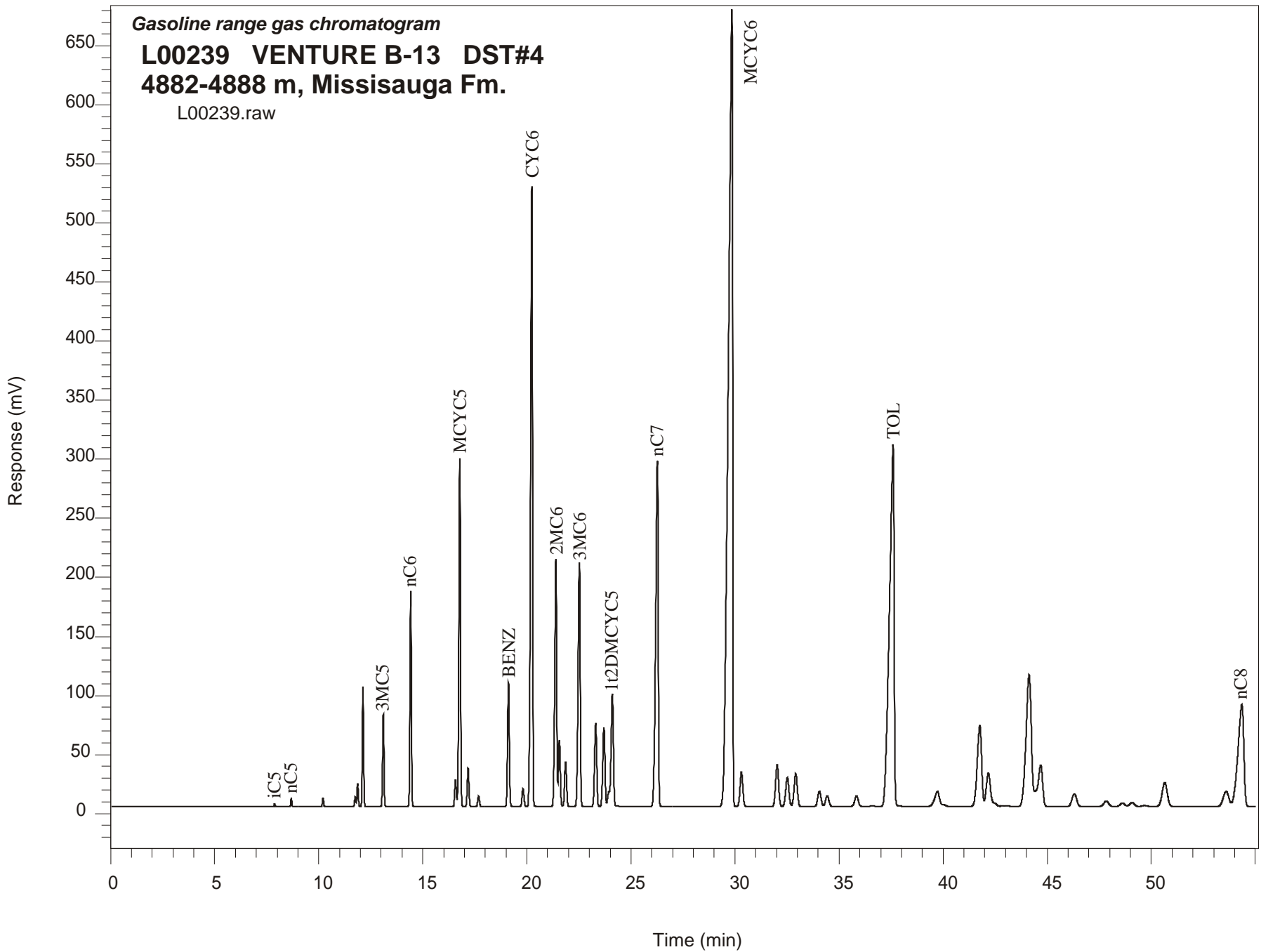


Gasoline range gas chromatogram
L00239 VENTURE B-13 DST#4
4882-4888 m, Missisauga Fm.
L00239.raw



VENTURE B-13 GSC #L00239, DST#4
Gasoline Range Gas Chromatogram Report

RET TIME [min]	PEAK	AREA	HEIGHT [uV]
7.88	iC5	8627	2658
8.68	nC5	24222	7581
10.21	22DMC4	28497	7280
11.75	CYC5	34575	8354
11.87	23DMC4	86922	19717
12.13	2MC5	440761	101813
13.10	3MC5	360417	77963
14.42	nC6	855194	182725
16.57	22DMC5	128685	22663
16.78	MCYC5	1610035	295293
17.17	24DMC5	178653	32488
17.68	223TMC4	54118	9082
19.12	Benzene	599995	105145
19.81	33DMC5	101111	15243
20.24	CYC6	3470671	525096
21.39	2MC6	1409308	209687
21.56	23DMC5	337117	55980
21.86	11DMCYC5	250127	37380
22.52	3MC6	1450692	206815
23.30	1c3DMCYC5	504851	70616
23.70	1t3DMCYC5	489652	66739
24.10	1t2DMCYC5	803572	95333
26.27	nC7	2570785	292347
29.85	MCYC6	9717233	674418
30.31	22DMC6	277017	29273
32.03	ECYC5	359108	35494
32.52	25DMC6	263773	24587
32.92	24DMC6	297109	28006
34.06	223TMC5	146934	13105
36.60	234TMC5	8494	630
37.60	Toluene	4865983	306967
41.76	2MC7	1009377	69313
44.69	3MC7	577194	35291
53.59	1c4DMCYC6	178454	10797
54.34	nC8	1595215	84599