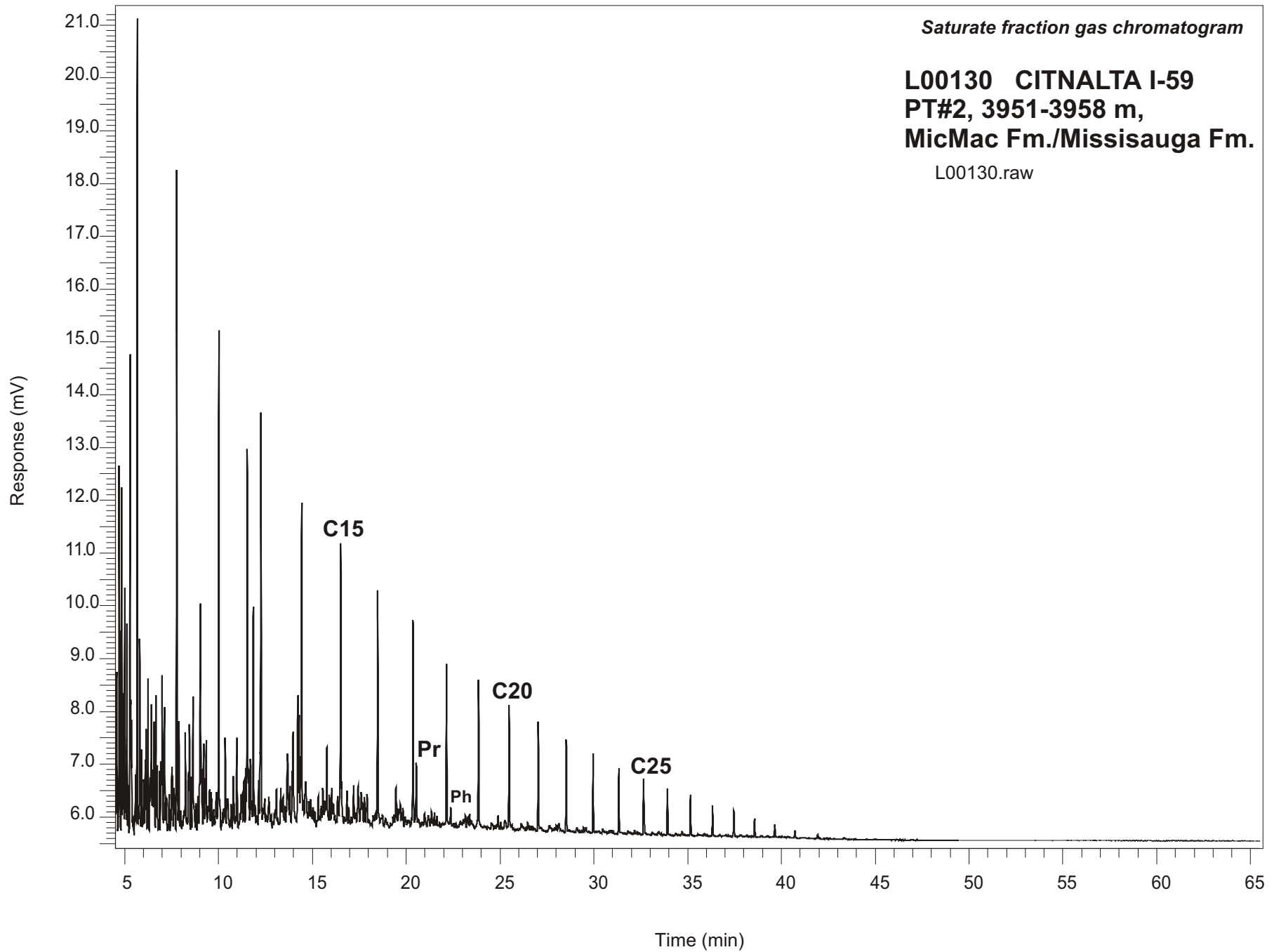


Saturate fraction gas chromatogram

**L00130 CITNALTA I-59
PT#2, 3951-3958 m,
MicMac Fm./Missisauga Fm.**

L00130.raw



CITNALTA I-59
GSC #L00130, PT#2
Saturate Fraction Gas Chromatogram Report

RET TIME [min]	PEAK	AREA	HEIGHT [uV]
10.02	C12	19977	9472
12.26	C13	19287	7751
14.43	C14	14083	6082
16.51	C15	12994	5217
18.49	C16	10610	4407
20.36	C17	9563	3928
20.54	Pr	4290	1206
22.15	C18	6920	3004
22.37	Ph	1194	348
23.86	C19	6282	2727
25.48	C20	5731	2271
27.04	C21	4608	2039
28.53	C22	4119	1732
29.96	C23	3601	1504
31.33	C24	3070	1244
32.65	C25	3150	1066
33.92	C26	2215	874
35.14	C27	1890	775
36.33	C28	1551	588
37.47	C29	1301	491
38.57	C30	894	345
39.65	C31	653	247