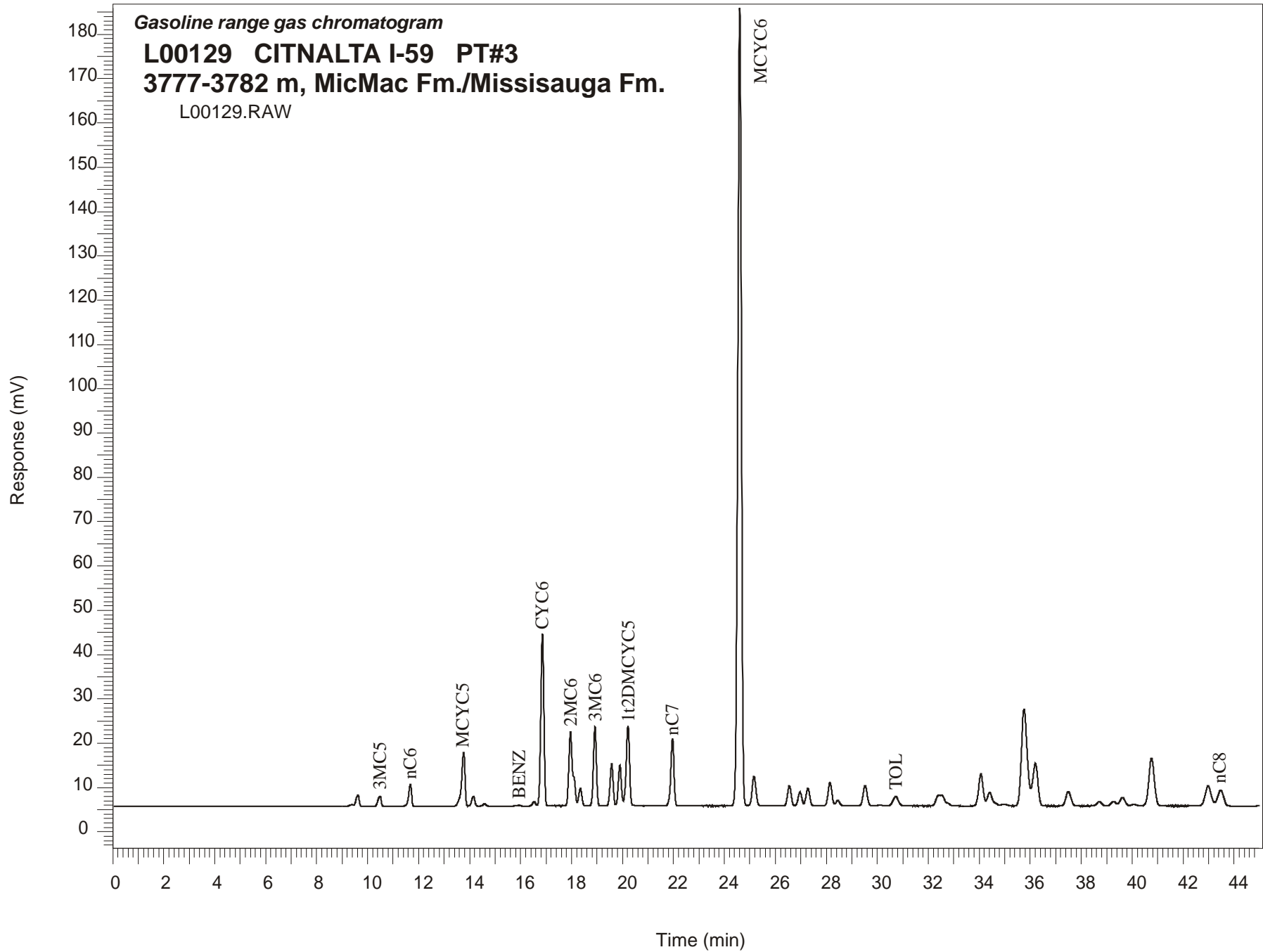


Gasoline range gas chromatogram

L00129 CITNALTA I-59 PT#3

3777-3782 m, MicMac Fm./Missisauga Fm.

L00129.RAW



CITNALTA I-59 GSC #L00129, PT#3 Gasoline Range Gas Chromatogram Report

RET TIME [min]	PEAK	AREA	HEIGHT [uV]
9.38	23DMC4	4014	405
9.62	2MC5	22642	2496
10.48	3MC5	21093	2315
11.68	nC6	39178	4940
13.77	MCYC5	116198	12139
14.15	24DMC5	19397	2254
14.59	223TMC4	4671	530
15.95	Benzene	2077	202
16.53	33DMC5	8656	1010
16.86	CYC6	334359	38872
17.96	2MC6	184884	16785
18.10	23DMC5	Peak co-elutes with 2MC6	
18.35	11DMCYC5	34069	4025
18.92	3MC6	145844	17923
19.58	1c3DMCYC5	78335	9543
19.90	1t3DMCYC5	75009	9062
20.22	1t2DMCYC5	162812	17982
21.96	nC7	130027	15257
24.60	MCYC6	1752967	180088
25.17	22DMC6	70706	6678
26.55	ECYC5	45811	4592
26.97	25DMC6	32177	3158
27.28	24DMC6	40805	3986
28.14	223TMC5	57038	5332
30.10	234TMC5	2743	242
30.72	Toluene	31897	2137
34.07	2MC7	88912	7173
36.20	3MC7	137613	9620
42.98	1c4DMCYC6	75317	4561
43.47	nC8	58892	3599