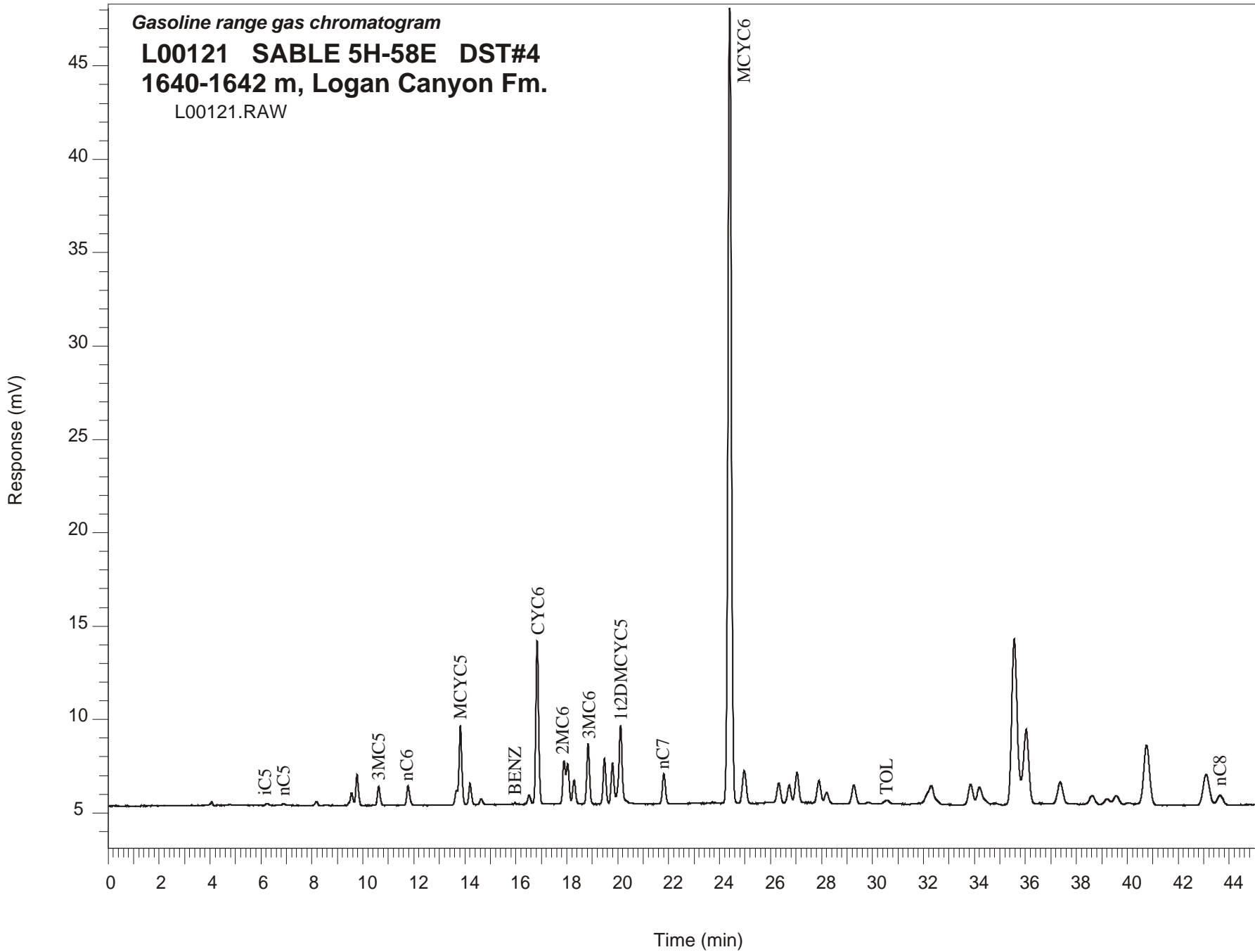


Gasoline range gas chromatogram

**L00121 SABLE 5H-58E DST#4**  
**1640-1642 m, Logan Canyon Fm.**

L00121.RAW



**SABLE 5H-58E GSC #L00121, DST#4**  
**Gasoline Range Gas Chromatogram Report**

| RET TIME [min] | PEAK      | AREA   | HEIGHT [uV] |
|----------------|-----------|--------|-------------|
| 6.24           | iC5       | 603    | 85          |
| 6.88           | nC5       | 383    | 72          |
| 8.18           | 22DMC4    | 1785   | 231         |
| 9.56           | 23DMC4    | 5387   | 681         |
| 9.77           | 2MC5      | 11598  | 1651        |
| 10.62          | 3MC5      | 7207   | 1002        |
| 11.77          | nC6       | 8248   | 1056        |
| 13.67          | 22DMC5    | 4332   | 773         |
| 13.82          | MCYC5     | 32876  | 4239        |
| 14.20          | 24DMC5    | 8270   | 1134        |
| 14.64          | 223TMC4   | 2318   | 302         |
| 16.52          | 33DMC5    | 3885   | 494         |
| 16.84          | CYC6      | 67628  | 8732        |
| 17.89          | 2MC6      | 16931  | 2327        |
| 18.03          | 23DMC5    | 16125  | 2135        |
| 18.29          | 11DMCYC5  | 9863   | 1256        |
| 18.84          | 3MC6      | 24297  | 3217        |
| 19.48          | 1c3DMCYC5 | 17980  | 2386        |
| 19.80          | 1t3DMCYC5 | 16248  | 2136        |
| 20.11          | 1t2DMCYC5 | 35464  | 4075        |
| 21.81          | nC7       | 13557  | 1622        |
| 24.40          | MCYC6     | 397915 | 42578       |
| 24.97          | 22DMC6    | 18210  | 1738        |
| 26.32          | ECYC5     | 10344  | 1071        |
| 26.73          | 25DMC6    | 9253   | 947         |
| 27.03          | 24DMC6    | 16317  | 1613        |
| 27.90          | 223TMC5   | 12290  | 1186        |
| 30.55          | Toluene   | 2091   | 174         |
| 33.85          | 2MC7      | 12043  | 1017        |
| 36.03          | 3MC7      | 59015  | 3966        |
| 43.09          | 1c4DMCYC6 | 26143  | 1587        |
| 43.63          | nC8       | 468    | 48          |