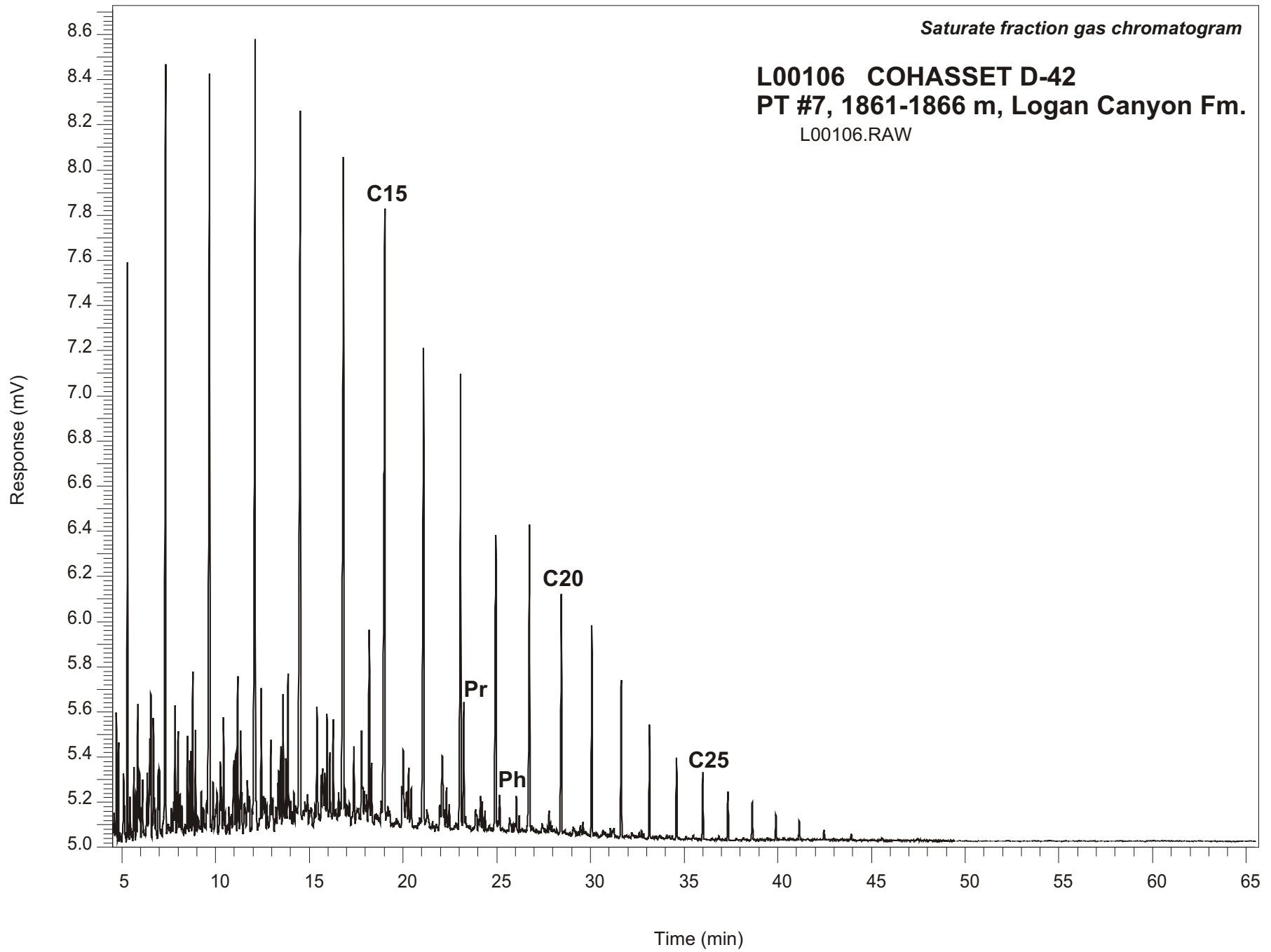


*Saturate fraction gas chromatogram*

**L00106 COHASSET D-42**  
**PT #7, 1861-1866 m, Logan Canyon Fm.**  
L00106.RAW



**COHASSET D-42**  
**GSC #L00106, PT#7**  
**Saturate Fraction Gas Chromatogram Report**

| <b>RET TIME [min]</b> | <b>PEAK</b> | <b>AREA</b> | <b>HEIGHT [uV]</b> |
|-----------------------|-------------|-------------|--------------------|
| 12.11                 | C12         | 12416       | 3459               |
| 14.52                 | C13         | 13086       | 3146               |
| 16.82                 | C14         | 11422       | 2980               |
| 19.03                 | C15         | 10258       | 2722               |
| 21.10                 | C16         | 8120        | 2118               |
| 23.07                 | C17         | 6914        | 2003               |
| 23.24                 | Pr          | 1902        | 556                |
| 24.96                 | C18         | 5308        | 1316               |
| 25.15                 | Ph          | 583         | 161                |
| 26.74                 | C19         | 4431        | 1367               |
| 28.45                 | C20         | 3248        | 1049               |
| 30.08                 | C21         | 2625        | 935                |
| 31.64                 | C22         | 1978        | 691                |
| 33.15                 | C23         | 1550        | 506                |
| 34.59                 | C24         | 1129        | 359                |
| 36.00                 | C25         | 871         | 302                |
| 37.34                 | C26         | 640         | 217                |
| 38.64                 | C27         | 514         | 169                |
| 39.90                 | C28         | 336         | 111                |
| 41.14                 | C29         | 266         | 87                 |
| 42.46                 | C30         | 139         | 45                 |

---