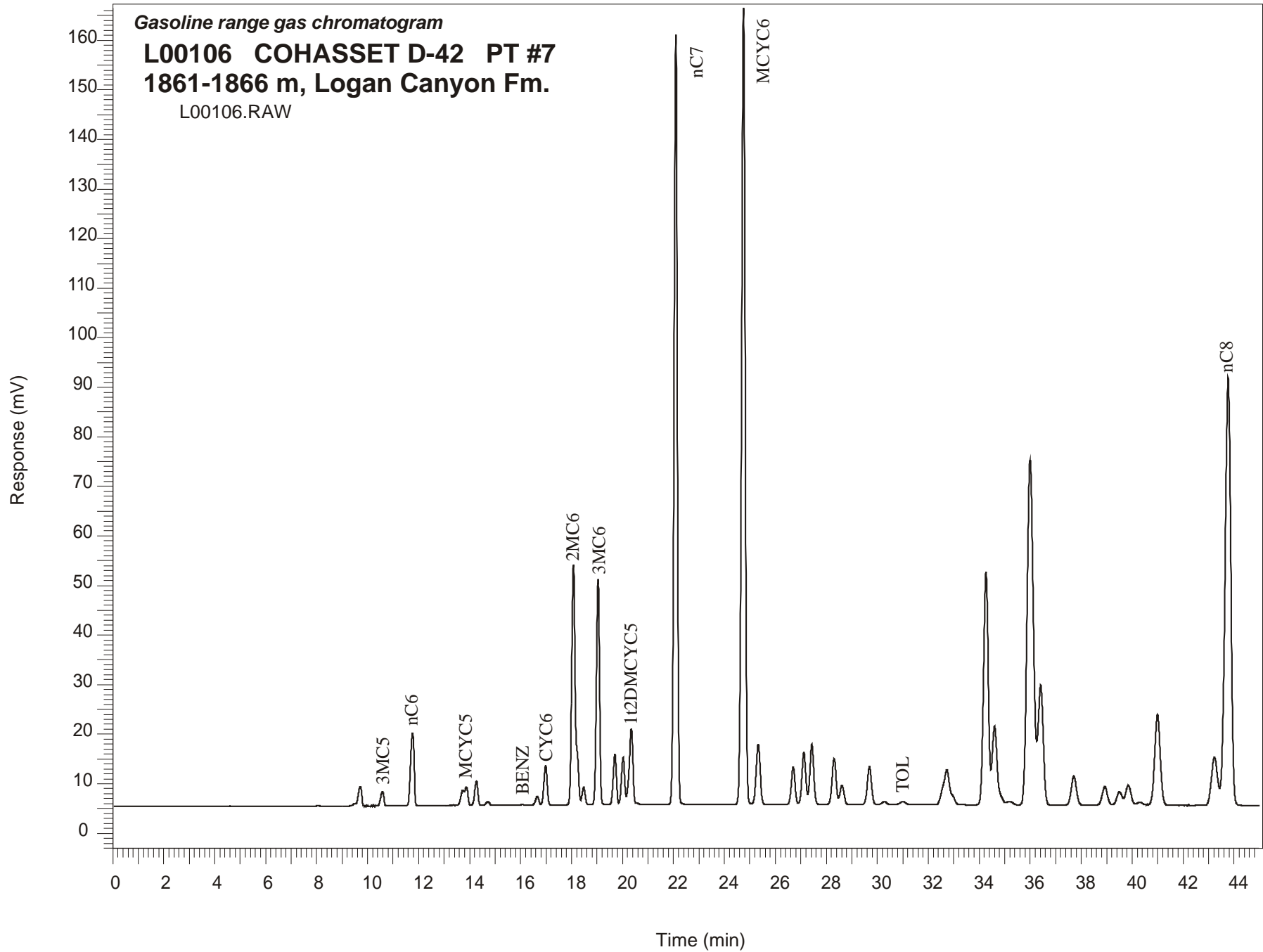


Gasoline range gas chromatogram

L00106 COHASSET D-42 PT #7
1861-1866 m, Logan Canyon Fm.

L00106.RAW



COHASSET D-42 GSC #L00106, PT#7 Gasoline Range Gas Chromatogram Report

RET TIME [min]	PEAK	AREA	HEIGHT [uV]
8.07	22DMC4	374	61
9.49	23DMC4	3893	478
9.71	2MC5	36842	3897
10.58	3MC5	26195	2845
11.76	nC6	141453	14591
13.73	22DMC5	26187	3061
13.88	MCYC5	32122	3710
14.27	24DMC5	42296	4917
14.72	223TMC4	6458	751
16.66	33DMC5	14668	1711
16.99	CYC6	69586	7967
18.07	2MC6	498493	48446
18.21	23DMC5	Peak co-elutes with 2MC6	
18.47	11DMCYC5	30306	3580
19.04	3MC6	384464	45406
19.70	1c3DMCYC5	86017	10140
20.02	1t3DMCYC5	79671	9343
20.35	1t2DMCYC5	148106	15131
22.09	nC7	1378300	155344
24.75	MCYC6	1584764	160578
25.33	22DMC6	133436	12138
26.70	ECYC5	76891	7490
27.12	25DMC6	110911	10533
27.43	24DMC6	128899	12200
28.31	223TMC5	102069	9239
30.28	234TMC5	6513	577
31.01	Toluene	506	43
34.26	2MC7	604577	46991
36.41	3MC7	343296	24224
43.22	1c4DMCYC6	159187	9695
43.77	nC8	1361431	86243