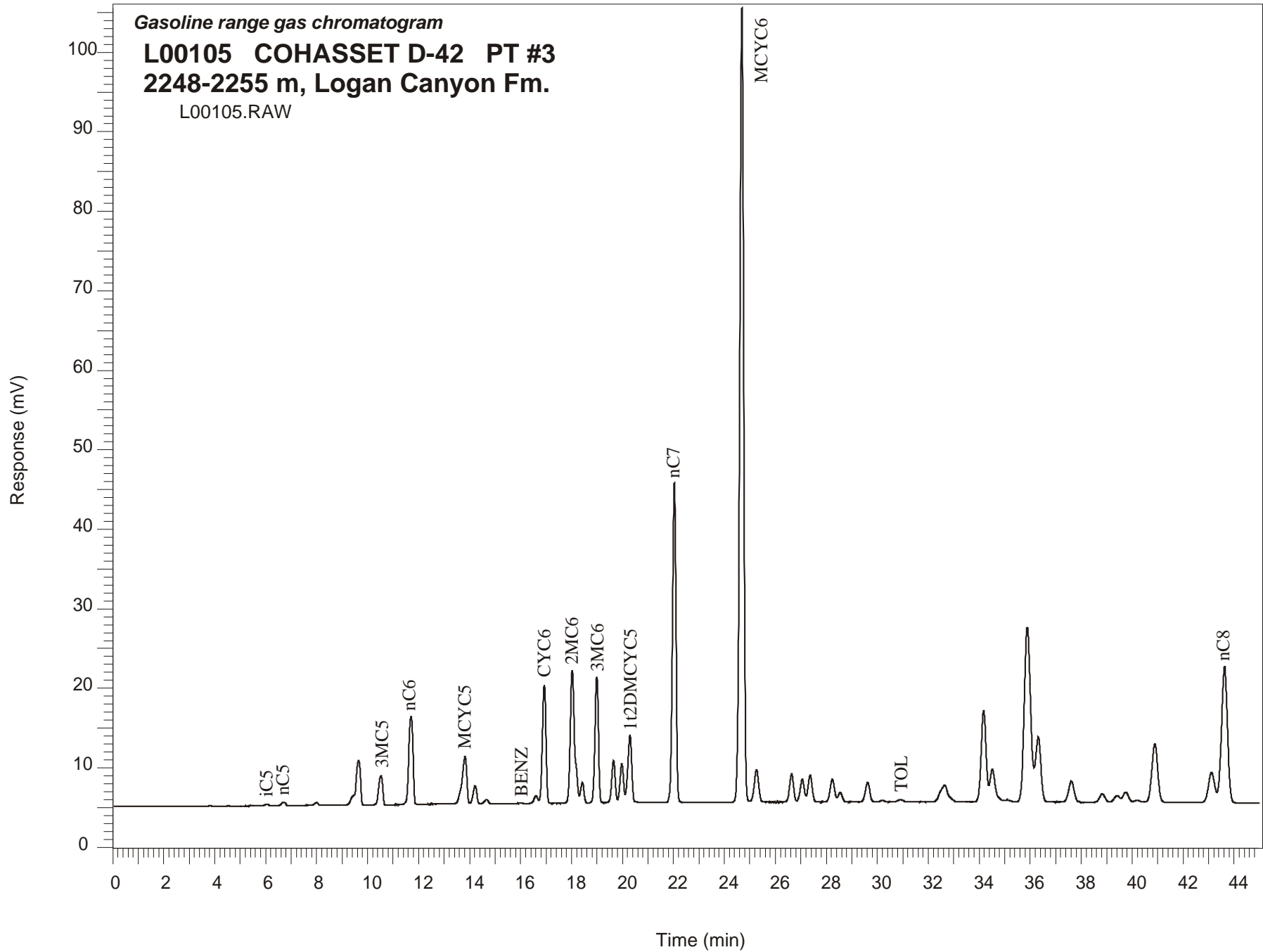


Gasoline range gas chromatogram

**L00105 COHASSET D-42 PT #3**  
**2248-2255 m, Logan Canyon Fm.**

L00105.RAW



## COHASSET D-42 GSC #L00105, PT#3 Gasoline Range Gas Chromatogram Report

RET TIME [min]	PEAK	AREA	HEIGHT [uV]
6.03	iC5	283	41
6.70	nC5	891	104
8.01	22DMC4	3352	340
9.64	2MC5	74246	5591
10.52	3MC5	40695	3677
11.70	nC6	124115	11032
13.82	MCYC5	78841	5934
14.22	24DMC5	22840	2270
14.67	223TMC4	4956	508
16.61	33DMC5	9910	947
16.93	CYC6	146327	14900
18.03	2MC6	198965	16723
18.17	23DMC5	Peak co-elutes with 2MC6	
18.42	11DMCYC5	23793	2542
18.99	3MC6	149202	15855
19.65	1c3DMCYC5	49084	5238
19.97	1t3DMCYC5	45565	4844
20.29	1t2DMCYC5	87075	8430
22.03	nC7	384957	40165
24.69	MCYC6	1060749	99915
25.26	22DMC6	48451	4060
26.64	ECYC5	38392	3552
27.06	25DMC6	32605	2874
27.37	24DMC6	37980	3385
28.24	223TMC5	34247	2880
30.21	234TMC5	2107	188
30.89	Toluene	248	25
34.17	2MC7	154624	11518
36.31	3MC7	120464	8182
43.11	1c4DMCYC6	63679	3765
43.63	nC8	280525	17092