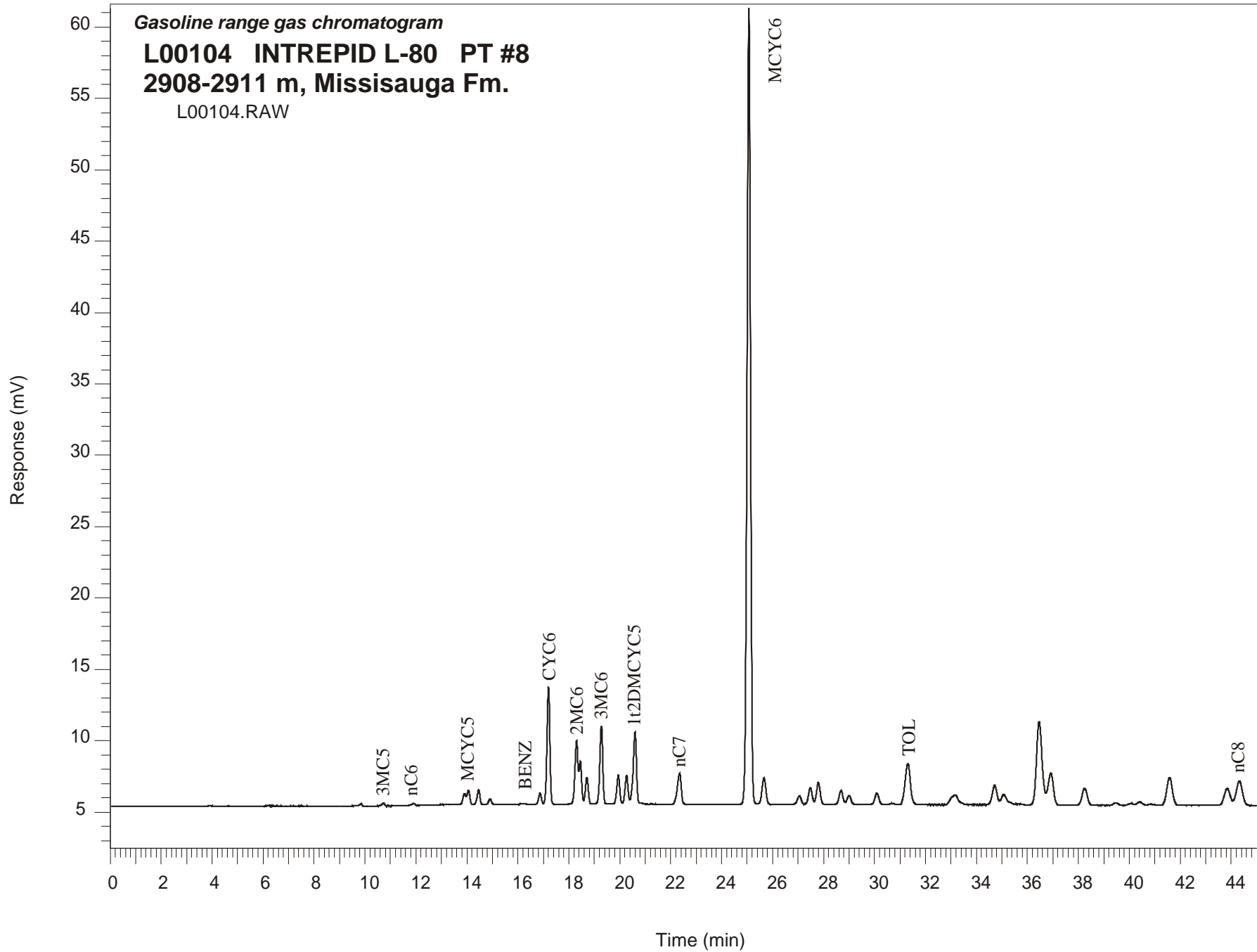


Gasoline range gas chromatogram

L00104 INTREPID L-80 PT #8
2908-2911 m, Missisauga Fm.

L00104.RAW



INTREPID L-80 GSC #L00104, PT#8 Gasoline Range Gas Chromatogram Report

RET TIME [min]	PEAK	AREA	HEIGHT [uV]
9.85	2MC5	1103	151
10.72	3MC5	1754	225
11.93	nC6	1305	131
13.90	22DMC5	5719	757
14.06	MCYC5	7565	986
14.46	24DMC5	7799	1038
14.91	223TMC4	2774	385
16.23	Benzene	528	48
16.87	33DMC5	5885	774
17.20	CYC6	64517	8141
18.30	2MC6	36276	4430
18.45	23DMC5	20807	2996
18.71	11DMCYC5	14660	1899
19.28	3MC6	42863	5462
19.94	1c3DMCYC5	15789	2004
20.27	1t3DMCYC5	15630	1978
20.60	1t2DMCYC5	43870	4965
22.35	nC7	22799	2160
25.07	MCYC6	528714	55696
25.66	22DMC6	19570	1851
27.05	ECYC5	6089	587
27.48	25DMC6	11867	1172
27.80	24DMC6	15643	1528
28.69	223TMC5	10168	963
30.68	234TMC5	667	73
31.31	Toluene	41261	2854
34.72	2MC7	16312	1284
36.92	3MC7	32692	2216
43.84	1c4DMCYC6	18729	1159
44.32	nC8	28317	1683