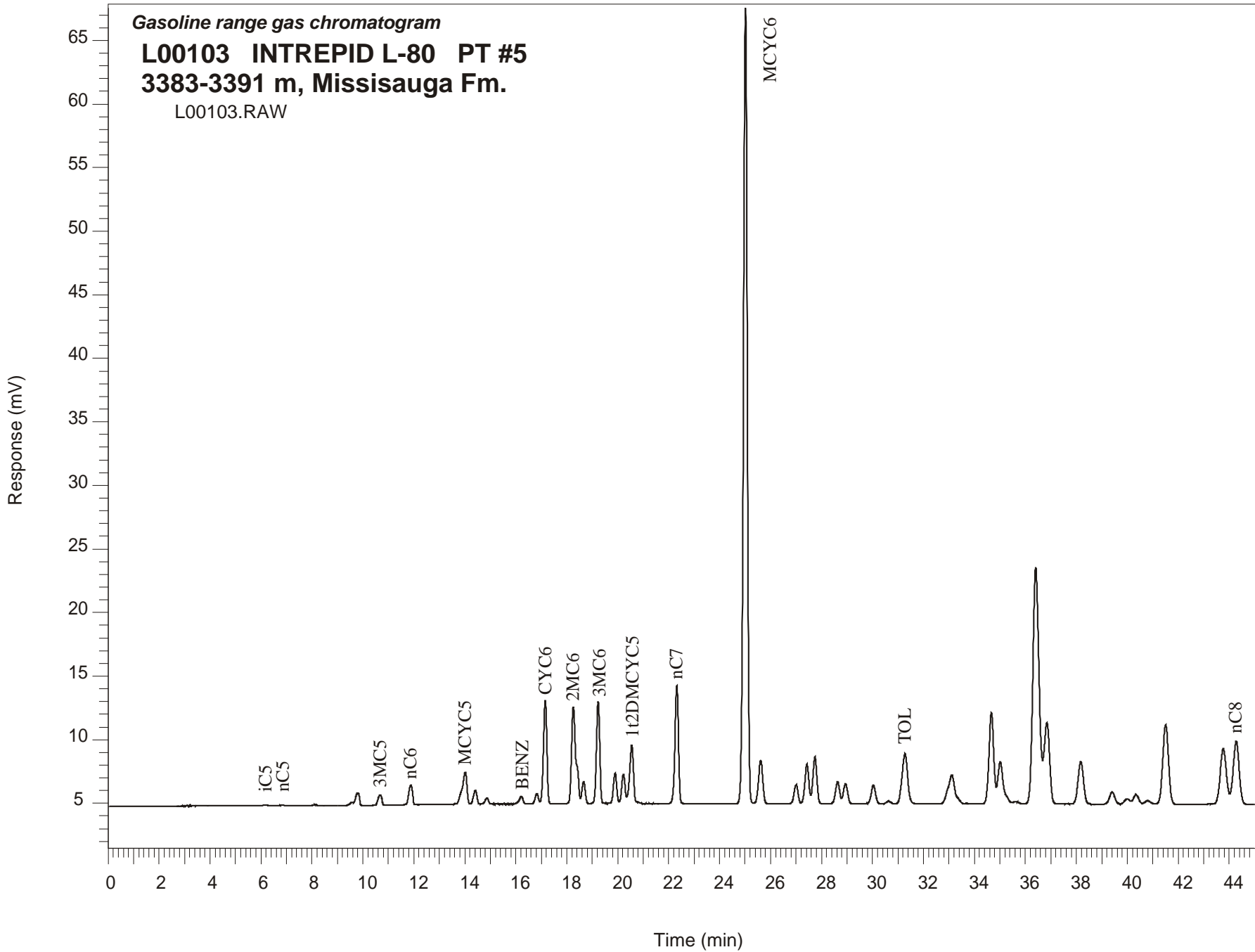


Gasoline range gas chromatogram

L00103 INTREPID L-80 PT #5

3383-3391 m, Missisauga Fm.

L00103.RAW



INTREPID L-80 GSC #L00103, PT#5 Gasoline Range Gas Chromatogram Report

RET TIME [min]	PEAK	AREA	HEIGHT [uV]
8.15	22DMC4	440	77
9.58	23DMC4	2495	262
9.80	2MC5	10227	975
10.68	3MC5	8311	815
11.88	nC6	15928	1544
14.02	MCYC5	32179	2478
14.41	24DMC5	10098	1072
14.87	223TMC4	4253	466
16.22	Benzene	6168	580
16.83	33DMC5	7312	793
17.16	CYC6	76529	8127
18.26	2MC6	92296	7612
18.40	23DMC5	Peak co-elutes with 2MC6	
18.66	11DMCYC5	15328	1703
19.23	3MC6	71609	7992
19.90	1c3DMCYC5	21016	2362
20.22	1t3DMCYC5	20137	2233
20.55	1t2DMCYC5	45582	4510
22.32	nC7	86406	9257
25.02	MCYC6	647584	62562
25.61	22DMC6	38949	3412
27.00	ECYC5	16171	1524
27.43	25DMC6	33998	3106
27.74	24DMC6	40524	3706
28.63	223TMC5	19748	1728
30.63	234TMC5	1676	166
31.28	Toluene	59642	3944
34.67	2MC7	93027	7125
36.84	3MC7	96469	6392
43.76	1c4DMCYC6	57775	3865
44.28	nC8	67027	4487