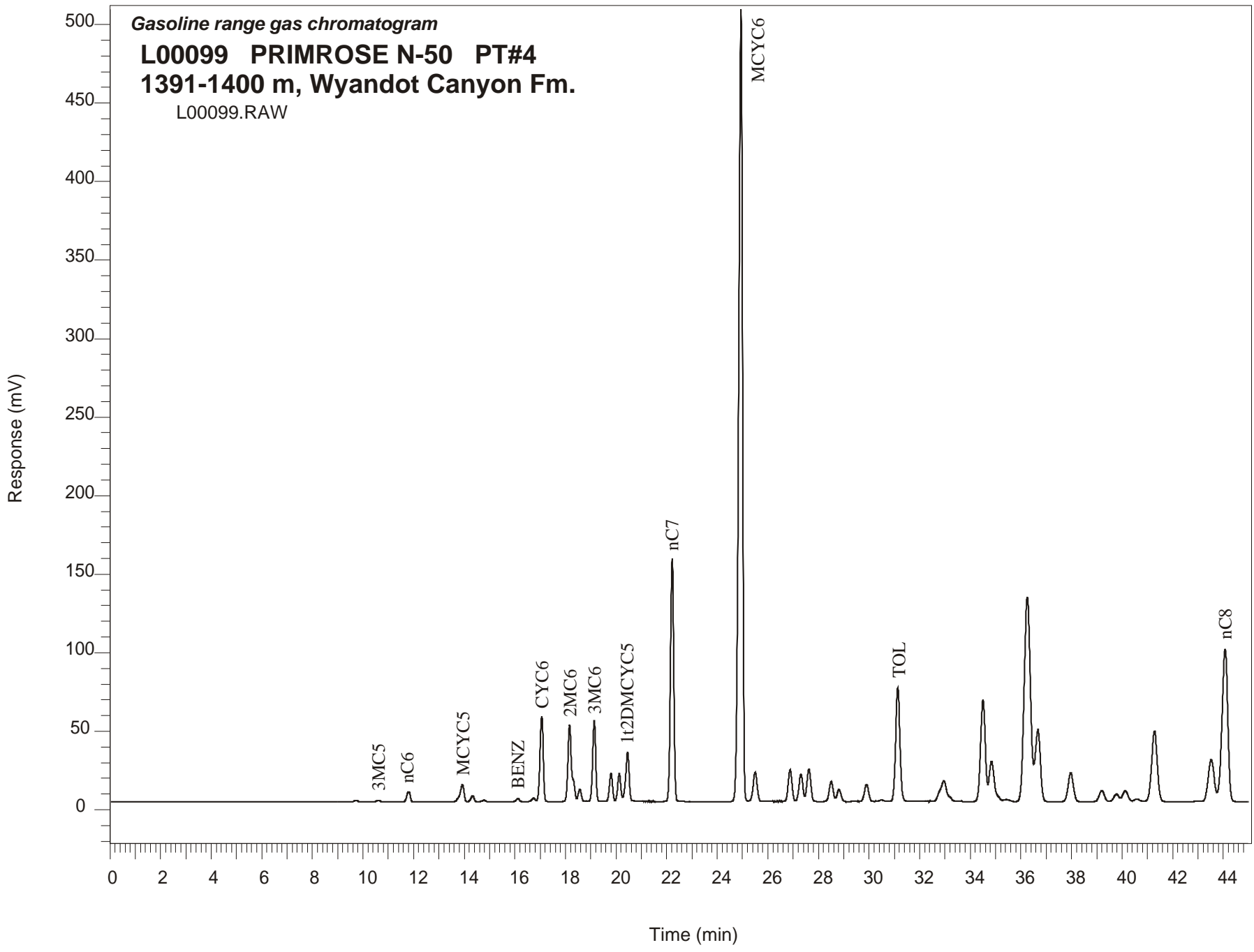


Gasoline range gas chromatogram
L00099 PRIMROSE N-50 PT#4
1391-1400 m, Wyandot Canyon Fm.
L00099.RAW



PRIMROSE N-50
GSC #L00099, PT#4
Gasoline Range Gas Chromatogram Report

RET TIME [min]	PEAK	AREA	HEIGHT [uV]
9.74	2MC5	9742	1027
10.62	3MC5	10473	1117
11.81	nC6	63197	6408
13.93	MCYC5	123098	11042
14.33	24DMC5	34022	3889
14.78	223TMC4	9350	1044
16.12	Benzene	17894	1910
16.74	33DMC5	21244	2395
17.06	CYC6	484373	54465
18.16	2MC6	531754	48910
18.26	23DMC5	*	*
18.57	11DMCYC5	68902	8017
19.14	3MC6	443013	51499
19.80	1c3DMCYC5	156497	18290
20.13	1t3DMCYC5	152499	17636
20.45	1t2DMCYC5	296934	31301
22.22	nC7	1396894	154603
24.94	MCYC6	5200168	504675
25.50	22DMC6	206866	18484
26.88	ECYC5	211028	20315
27.31	25DMC6	185256	17481
27.62	24DMC6	221863	20796
28.51	223TMC5	141075	12659
30.49	234TMC5	12489	965
31.14	Toluene	853530	72488
34.51	2MC7	835428	64501
36.68	3MC7	657377	46141
43.52	1c4DMCYC6	447725	26875
44.07	nC8	1545348	97217

* - This peak colluded with 2MC6

**PRIMROSE N-50 GSC #L00099, PT#4
Gasoline Range Gas Chromatogram Report**

RET TIME [min]	PEAK	AREA	HEIGHT [uV]
9.74	2MC5	9742	1027
10.62	3MC5	10473	1117
11.81	nC6	63197	6408
13.93	MCYC5	123098	11042
14.33	24DMC5	34022	3889
14.78	223TMC4	9350	1044
16.12	Benzene	17894	1910
16.74	33DMC5	21244	2395
17.06	CYC6	484373	54465
18.16	2MC6	531754	48910
18.30	23DMC5	Peak co-elutes with 2MC6	
18.57	11DMCYC5	68902	8017
19.14	3MC6	443013	51499
19.80	1c3DMCYC5	156497	18290
20.13	1t3DMCYC5	152499	17636
20.45	1t2DMCYC5	296934	31301
22.22	nC7	1396894	154603
24.94	MCYC6	5200168	504675
25.50	22DMC6	206866	18484
26.88	ECYC5	211028	20315
27.31	25DMC6	185256	17481
27.62	24DMC6	221863	20796
28.51	223TMC5	141075	12659
30.49	234TMC5	12489	965
31.14	Toluene	853530	72488
34.51	2MC7	835428	64501
36.68	3MC7	657377	46141
43.52	1c4DMCYC6	447725	26875
44.07	nC8	1545348	97217