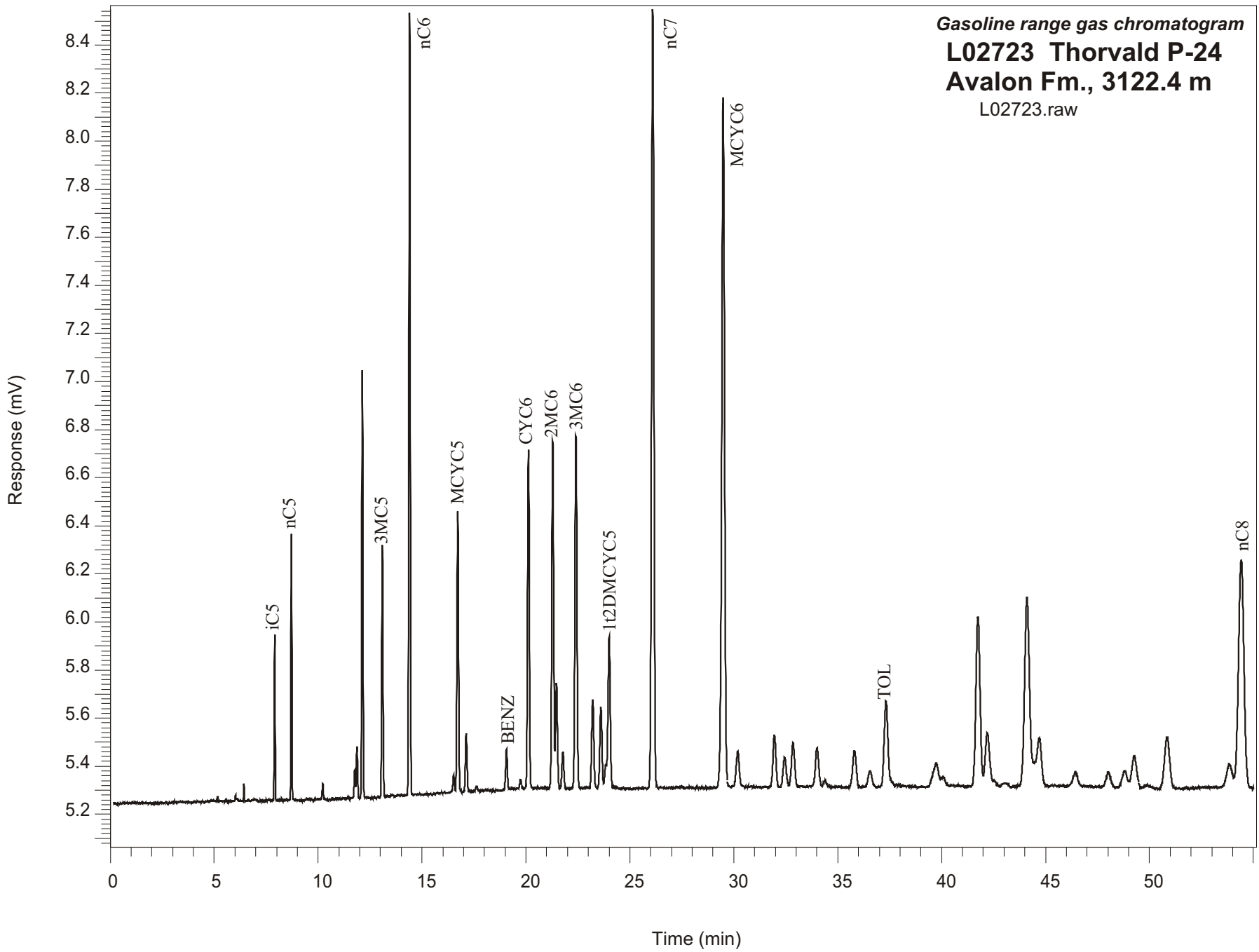


Gasoline range gas chromatogram
L02723 Thorvald P-24
Avalon Fm., 3122.4 m
L02723.raw



Sample Name: #2723 Thorvald P-24

GASOLINE RANGE ANALYSIS DATA

ORGANIC GEOCHEMISTRY LAB GSC CALGARY

| Ret Time [min] | Compound | Area | Height [uV] |
|-------------------|-----------|-------|----------------|
| 7.91 | iC5 | 1875 | 690 |
| 8.71 | nC5 | 3151 | 1105 |
| 10.22 | 22DMC4 | 257 | 66 |
| 11.77 | CYC5 | 473 | 121 |
| 11.87 | 23DMC4 | 906 | 218 |
| 12.13 | 2MC5 | 7139 | 1781 |
| 13.09 | 3MC5 | 4557 | 1053 |
| 14.4 | nC6 | 14342 | 3265 |
| 16.52 | 22DMC5 | 330 | 68 |
| 16.72 | MCYC5 | 5943 | 1164 |
| 17.13 | 24DMC5 | 1303 | 244 |
| 17.61 | 223TMC4 | 111 | 20 |
| 19.06 | Benzene | 912 | 168 |
| 19.74 | 33DMC5 | 147 | 33 |
| 20.12 | CYC6 | 8290 | 1408 |
| 21.29 | 2MC6 | 9002 | 1445 |
| 21.47 | 23DMC5 | 2789 | 438 |
| 21.78 | 11DMCYC5 | 979 | 147 |
| 22.41 | 3MC6 | 9763 | 1466 |
| 23.21 | 1c3DMCYC5 | 2515 | 365 |
| 23.6 | 1t3DMCYC5 | 2396 | 336 |
| 24 | 1t2DMCYC5 | 4690 | 630 |
| 26.1 | nC7 | 25058 | 3233 |
| 29.49 | MCYC6 | 27620 | 2867 |
| 30.19 | 22DMC6 | 1403 | 144 |
| 31.95 | ECYC5 | 2125 | 214 |
| 32.45 | 25DMC6 | 1180 | 117 |
| 32.85 | 24DMC6 | 1920 | 182 |
| 34.01 | 223TMC5 | 1683 | 155 |
| 36.57 | 234TMC5 | 295 | 34 |
| 37.32 | Toluene | 4159 | 345 |
| 41.74 | 2MC7 | 9558 | 695 |
| 44.7 | 3MC7 | 1691 | 138 |
| 53.82 | 1c4DMCYC6 | 1072 | 72 |
| 54.41 | nC8 | 16169 | 920 |