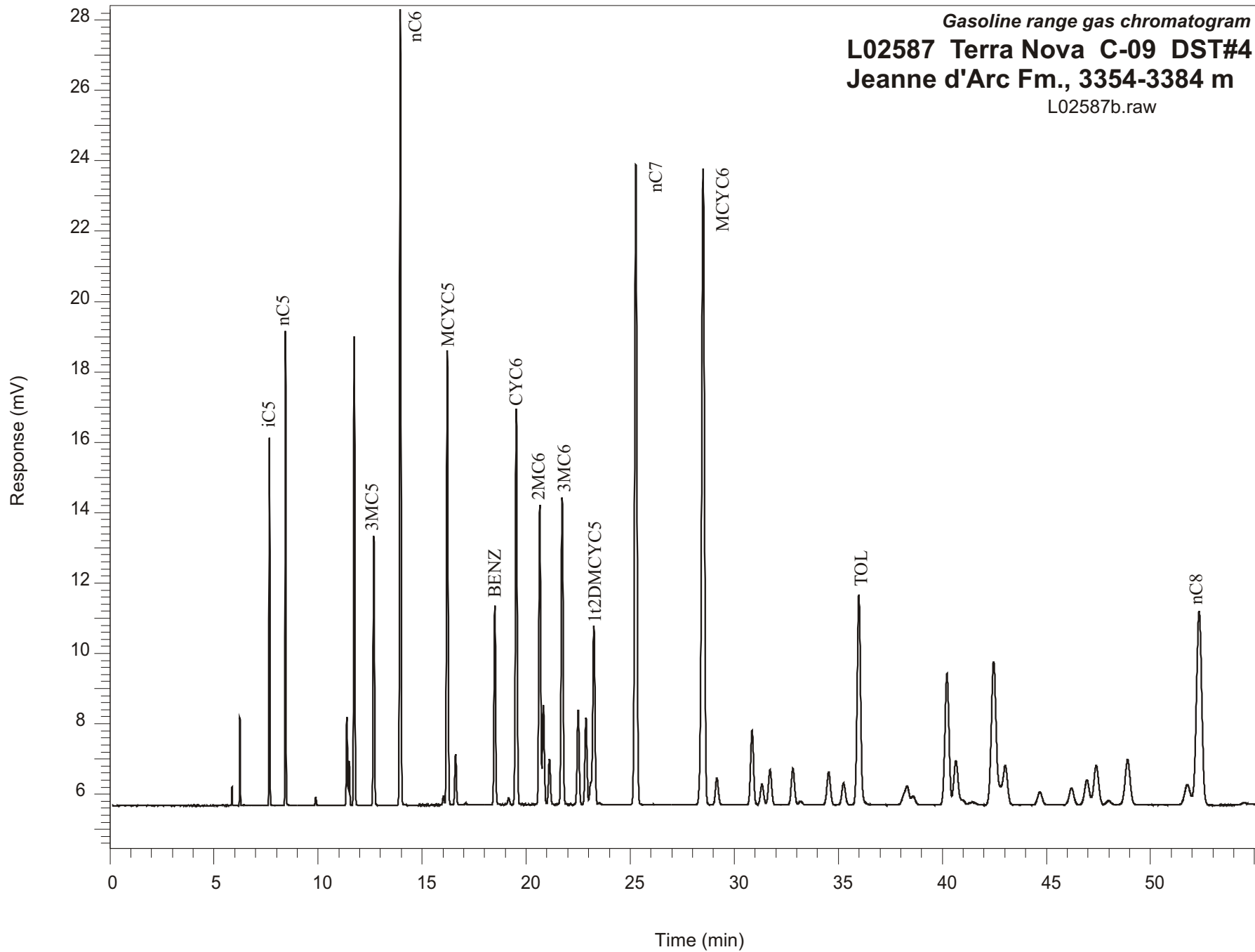


Gasoline range gas chromatogram
L02587 Terra Nova C-09 DST#4
Jeanne d'Arc Fm., 3354-3384 m
L02587b.raw



Sample Name: #2587 Terra Nova C-09 DST#4-61

GASOLINE RANGE ANALYSIS DATA

ORGANIC GEOCHEMISTRY LAB GSC CALGARY

Ret Time [min]	Compound	Area	Height [uV]
7.67	iC5	27413	10436
8.44	nC5	37068	13473
9.89	22DMC4	891	246
11.39	CYC5	9636	2520
11.49	23DMC4	5028	1268
11.74	2MC5	51991	13336
12.68	3MC5	32276	7656
13.95	nC6	96733	22600
16.02	22DMC5	1293	254
16.21	MCYC5	64959	12916
16.61	24DMC5	7488	1423
17.09	223TMC4	256	47
18.49	Benzene	29916	5645
19.16	33DMC5	1051	175
19.53	CYC6	65127	11249
20.66	2MC6	51137	8501
20.83	23DMC5	17309	2808
21.12	11DMCYC5	8365	1289
21.73	3MC6	55967	8724
22.5	1c3DMCYC5	17971	2681
22.87	1t3DMCYC5	16825	2458
23.25	1t2DMCYC5	39968	5068
25.27	nC7	136156	18200
28.5	MCYC6	168261	18074
29.17	22DMC6	7239	752
30.86	ECYC5	20519	2106
31.33	25DMC6	6051	578
31.72	24DMC6	10331	996
32.82	223TMC5	11021	1027
35.26	234TMC5	7182	614
35.99	Toluene	68462	5953
40.22	2MC7	48727	3691
43.02	3MC7	18269	1100
51.78	1c4DMCYC6	10618	571
52.34	nC8	97635	5511