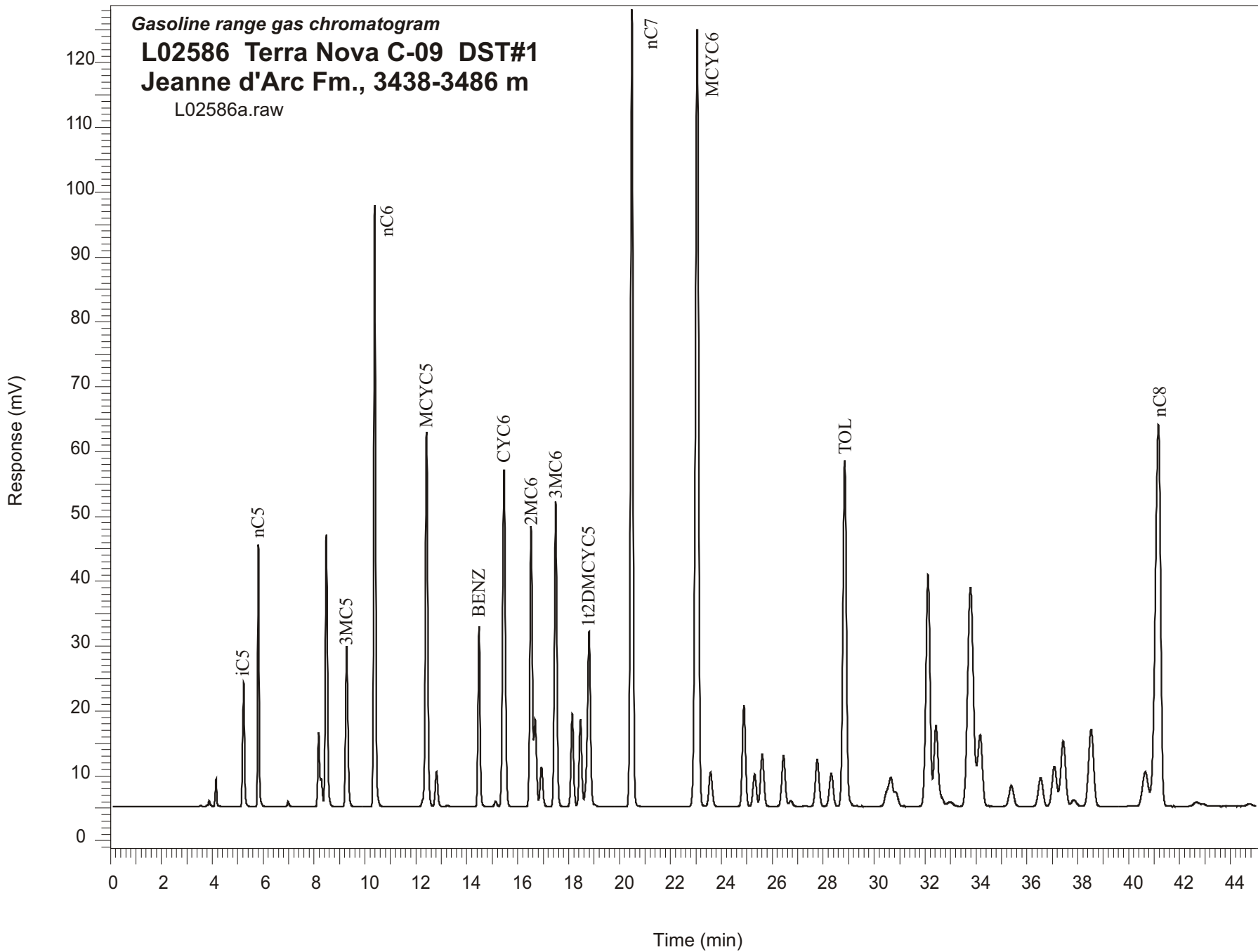


Gasoline range gas chromatogram  
**L02586 Terra Nova C-09 DST#1**  
**Jeanne d'Arc Fm., 3438-3486 m**  
L02586a.raw



Sample Name: #2586 Terra Nova C-09 DST#1

-----  
GASOLINE RANGE ANALYSIS DATA  
-----

ORGANIC GEOCHEMISTRY LAB GSC CALGARY  
-----

Ret Time [min]	Compound	Area	Height [uV]
5.24	iC5	102754	19084
5.81	nC5	146399	40369
6.98	22DMC4	3935	798
8.18	CYC5	59667	11459
8.28	23DMC4	20380	4355
8.48	2MC5	245212	42000
9.28	3MC5	158226	24708
10.38	nC6	470508	92776
12.42	MCYC5	379518	57817
12.81	24DMC5	39238	5446
13.23	223TMC4	1326	209
14.48	Benzene	157713	27803
15.13	33DMC5	5742	809
15.46	CYC6	396347	51977
16.53	2MC6	299813	43344
16.68	23DMC5	92333	13482
16.93	11DMCYC5	46445	6124
17.49	3MC6	330270	47032
18.14	1c3DMCYC5	104147	14311
18.46	1t3DMCYC5	99015	13471
18.8	1t2DMCYC5	233653	27040
20.49	nC7	849634	122978
23.05	MCYC6	1062860	119974
23.58	22DMC6	48404	5313
24.89	ECYC5	134685	15608
25.31	25DMC6	45592	4980
25.61	24DMC6	75404	8067
26.44	223TMC5	76483	7830
28.32	234TMC5	53200	5043
28.85	Toluene	511132	53401
32.12	2MC7	409404	35733
34.17	3MC7	142384	11019
40.65	1c4DMCYC6	82961	5329
41.17	nC8	853599	58825