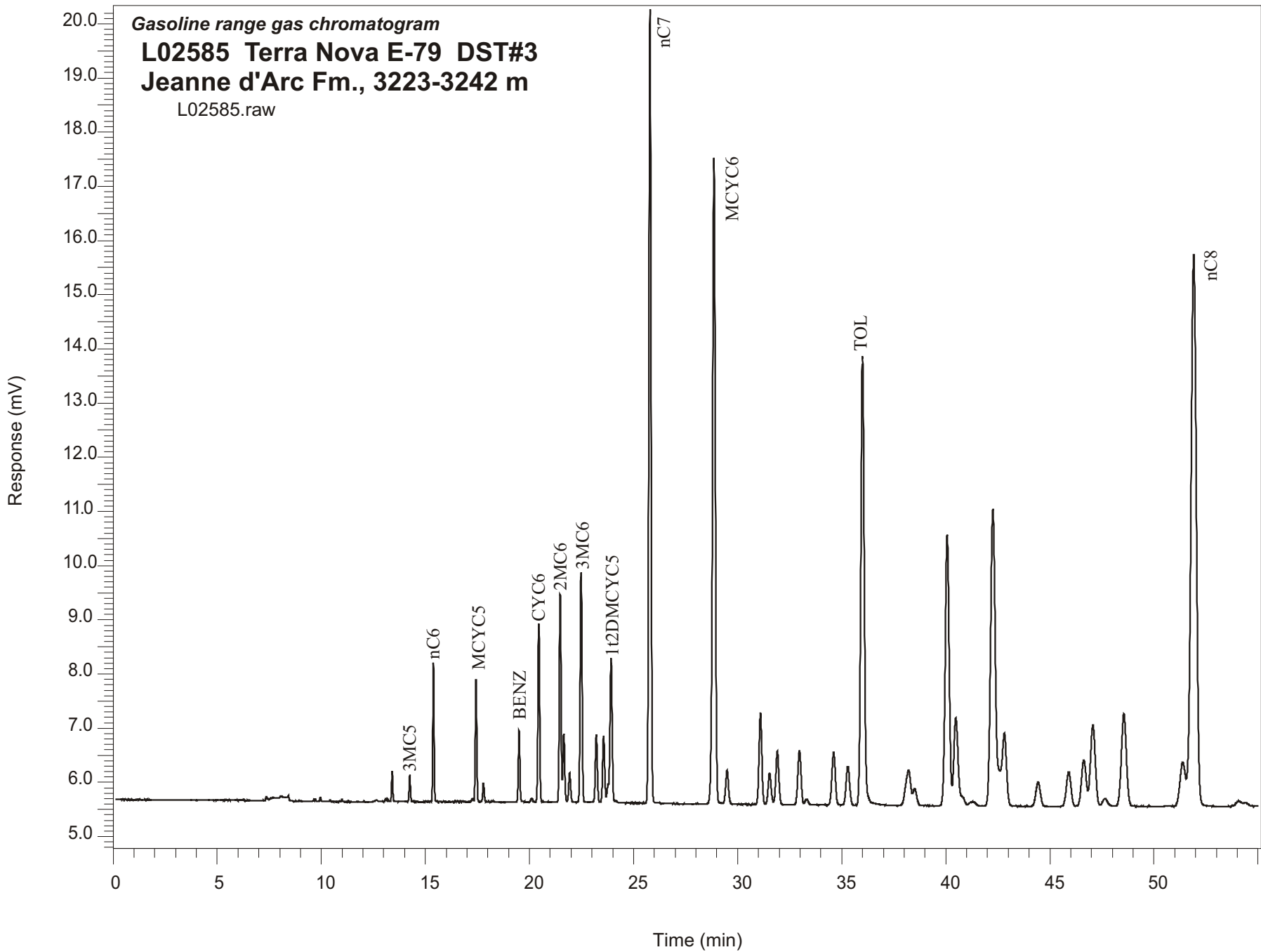


**Gasoline range gas chromatogram**  
**L02585 Terra Nova E-79 DST#3**  
**Jeanne d'Arc Fm., 3223-3242 m**  
L02585.raw



Sample Name: #2585 Terra Nova E-79 DST#3-44

-----  
GASOLINE RANGE ANALYSIS DATA  
-----

ORGANIC GEOCHEMISTRY LAB GSC CALGARY  
-----

Ret Time [min]	Compound	Area	Height [uV]
10.99	nC5	121	40
13.09	CYC5	209	56
13.19	23DMC4	181	48
13.41	2MC5	2188	569
14.25	3MC5	2023	490
15.39	nC6	10597	2559
17.27	22DMC5	273	56
17.43	MCYC5	10878	2250
17.79	24DMC5	1682	342
18.23	223TMC4	111	17
19.5	Benzene	6719	1315
20.11	33DMC5	338	61
20.45	CYC6	18422	3288
21.48	2MC6	22371	3839
21.65	23DMC5	7593	1255
21.93	11DMCYC5	3413	539
22.48	3MC6	26578	4248
23.21	1c3DMCYC5	8122	1248
23.56	1t3DMCYC5	8248	1223
23.92	1t2DMCYC5	18823	2658
25.79	nC7	105930	14640
28.86	MCYC6	108529	11902
29.49	22DMC6	5721	620
31.1	ECYC5	16165	1696
31.54	25DMC6	5893	574
31.91	24DMC6	9910	980
32.97	223TMC5	10588	1001
35.29	234TMC5	8298	712
36	Toluene	94314	8264
40.07	2MC7	64981	4940
42.81	3MC7	21302	1332
51.39	1c4DMCYC6	14091	797
51.91	nC8	180163	10161